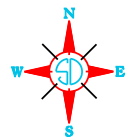
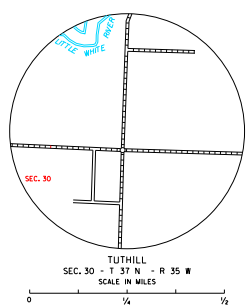
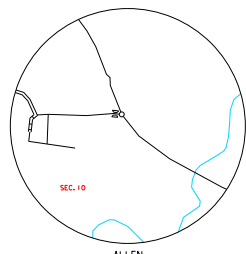
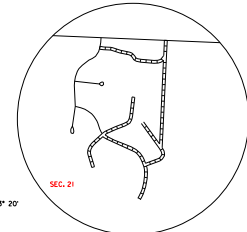


LEGEND

- INTERSTATE HIGHWAY FULL CONTROL OF ACCESS
- U.S. NUMBERED HIGHWAY
- STATE NUMBERED HIGHWAY
- FEDERAL AID HIGHWAY SYSTEM
- FEDERAL AID SECONDARY HIGHWAY SYSTEM
- END OF FEDERAL AID DESIGNATED ROUTE
- PRIMITIVE ROAD
- GRAVEL AND GRADED ROAD
- GRAVEL OR STONE SURFACED ROAD
- HARD SURFACED ROAD
- DIVIDED HIGHWAY (LEFT DRIVEWAY ROAD)
- INTERCHANGE
- HIGHWAY GRADE SEPARATION
- POINTS BETWEEN WHICH DISTANCES ARE MEASURED INDICATED THIS
- RAILROAD
- RAILROADS IN JUNCTURE
- TWO OR MORE TRACKS OF SEPARATELY OPERATED COMPANIES OR SEPARATE RIGHT-OF-WAY
- RAILROAD CROSSINGS
- GRADE CROSSINGS
- RAILROAD ABOVE
- RAILROAD BELOW
- RAILROAD WITH SURFACED RUNWAYS
- MILITARY FIELD
- AIRPORT, COMPLETE FACILITIES (COMMERCIAL OR MUNICIPAL)
- AIRFIELD, LIMITED FACILITIES
- LANDING AREA OR STRIP INCLUDING PRIVATE AIR FIELDS
- ARMY LIGHT BEACON (GENERAL)
- NARROW STREAM
- WIDE STREAM (INTERNATIONAL NAVIGATION)
- DRAINAGE DITCH (MAIN)
- IRRIGATION DITCH
- FA
- RESERVOIR, POND OR LAKE
- RESERVOIR, WITH DAM
- DAM
- WASH OR STAMP LAKE
- DOCK, PIER, OR LANDING
- HIGHWAY BRIDGE (OVER 20 FT. IN LENGTH)
- HIGHWAY BRIDGES CLOSELY SPACED
- STEEL TRUSS BRIDGE LARGE
- CANTILEVER BRIDGE
- FORD - ROAD ESTABLISHED
- CONCRETE FORD
- CAUSEWAY
- CATTLE GUARD
- PROMINENT ELEVATION
- STATE LINE
- COUNTY LINE
- SECTION LINE
- FEDERAL AND STATE RESERVATION BOUNDARY LINE
- MUNICIPALITY (SMALL)
- COUNTY SEAT
- OTHER CITIES AND VILLAGES
- UNINCORPORATED VILLAGE OR AREA OF CONCENTRATED CATTLE
- INCORPORATED CITY OR VILLAGE (FIGURES INDICATE 1990 POPULATION)



GENERAL HIGHWAY MAP

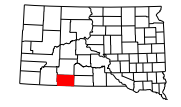
BENNETT COUNTY

SOUTH DAKOTA

prepared by the
SOUTH DAKOTA DEPARTMENT OF TRANSPORTATION
in cooperation with the
U.S. DEPARTMENT OF TRANSPORTATION
FEDERAL HIGHWAY ADMINISTRATION

SCALE 1 2 3 4 5 MILES

2012



UNIVERSAL TRANSVERSE MERCATOR PROJECTION

CADD PRODUCED BY CARTOGRAPHIC SECTION SOUTH DAKOTA DEPARTMENT OF TRANSPORTATION

RESTRICTION OF LIABILITY: The South Dakota Department of Transportation makes no guarantee, warranty, or representation as to the accuracy, completeness, or timeliness of the data and proprietary information contained herein and assumes no liability for any errors, omissions, or delays in the data or for any consequences arising from the use of the data. The user of this data is advised to verify the accuracy, completeness, and fitness for a particular purpose of the data with respect to their use.

COPIES OF THIS MAP ARE AVAILABLE FOR PUBLIC USE AT A NOMINAL COST
S.D. Department of Transportation
Map Sales -- Ph: 605/773-3299
Faxes: 605/773-3298