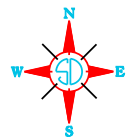
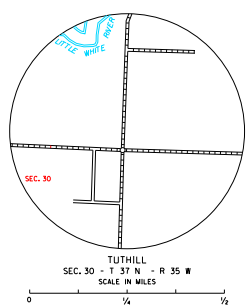
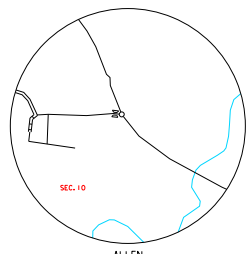
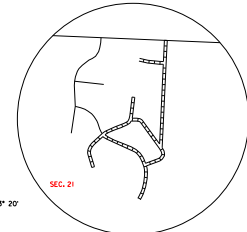


LEGEND

- INTERSTATE HIGHWAY FULL CONTROL OF ACCESS
- U.S. NUMBERED HIGHWAY
- STATE NUMBERED HIGHWAY
- FEDERAL AID HIGHWAY SYSTEM
- FEDERAL AID SECONDARY HIGHWAY SYSTEM
- END OF FEDERAL AID DESIGNATED ROUTE
- PRIMITIVE ROAD
- GRAVEL OR GRADED ROAD
- GRAVEL OR STONE SURFACED ROAD
- HARD SURFACED ROAD
- DIVIDED HIGHWAY (LEFT/RIGHT SIDE)
- INTERCHANGE
- HIGHWAY GRADE SEPARATION
- POINTS BETWEEN WHICH DISTANCES ARE MEASURED INDICATED THIS
- RAILROAD
- RAILROADS IN JUNCTION
- TWO OR MORE TRACKS OF SEPARATELY OPERATED COMPANIES OR SEPARATE RIGHT-OF-WAY
- RAILROAD CROSSINGS
- GRADE CROSSINGS
- RAILROAD ABOVE
- RAILROAD BELOW
- RAILROAD WITH SURFACED RUNWAYS
- MILITARY FIELD
- AIRPORT, COMPLETE FACILITIES (COMMERCIAL OR MUNICIPAL)
- AIRFIELD, LIMITED FACILITIES
- LANDING AREA OR STRIP INCLUDING PRIVATE AIR FIELDS
- ARMY LIGHT BEACON (GENERAL)
- NARROW STREAM
- WIDE STREAM (INTERNATIONAL NAVIGATION)
- DRAINAGE DITCH (MAIN)
- IRIGATION DITCH
- FA RESERVOIR, POND OR LAKE
- RESERVOIR, WITH DAM
- DAM
- WASH OR STAMP LAKE
- DOCK, PIER, OR LANDING
- HIGHWAY BRIDGE (OVER 20 FT. IN LENGTH)
- HIGHWAY BRIDGES CLOSELY SPACED
- STEEL TRUSS BRIDGE LARGE
- CANTILEVER BRIDGE
- FOOD - ROAD ESCARPMENT
- CONCRETE FORD
- CAUSEWAY
- CATTLE GUARD
- PROMINENT ELEVATION
- STATE LINE
- COUNTY LINE
- SECTION LINE
- FEDERAL AND STATE RESERVATION BOUNDARY LINE
- WARRANTY (SMALL)
- COUNTY SEAT
- OTHER CITIES AND VILLAGES
- UNINCORPORATED VILLAGE OR AREA OF CONCRETE CULVERT
- INCORPORATED CITY OR VILLAGE (FIGURES INDICATE 1990 POPULATION)



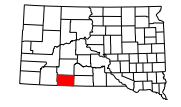
GENERAL HIGHWAY MAP

BENNETT COUNTY
SOUTH DAKOTA

prepared by the
SOUTH DAKOTA DEPARTMENT OF TRANSPORTATION
in cooperation with the
U.S. DEPARTMENT OF TRANSPORTATION
FEDERAL HIGHWAY ADMINISTRATION

SCALE 1 2 3 4 5 MILES

2017



UNIVERSAL TRANSVERSE MERCATOR PROJECTION

CADD PRODUCED BY
CARTOGRAPHIC SECTION
SOUTH DAKOTA
DEPARTMENT OF TRANSPORTATION

RESTRICTION OF LIABILITY: The South Dakota Department of Transportation makes no claim, guarantee, or warranty of the accuracy, completeness, or timeliness of the data and any liability for errors or omissions in the data or any other information contained herein is hereby disclaimed. The user assumes all responsibility for the use of the data and any liability for errors or omissions in the data or any other information contained herein is hereby disclaimed. The user assumes all responsibility for the use of the data and any liability for errors or omissions in the data or any other information contained herein is hereby disclaimed.

COPIES OF THIS MAP ARE AVAILABLE FOR PUBLIC USE AT A NOMINAL COST
S. D. Department of Transportation
Map Sales -- Ph: 605/773-3299
Faxes: 605/773-3298