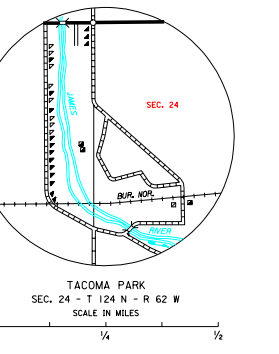
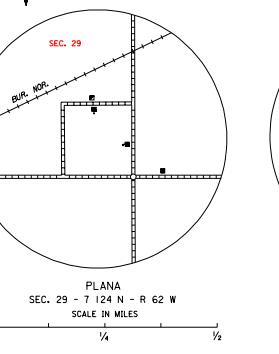
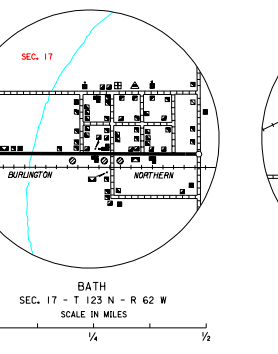
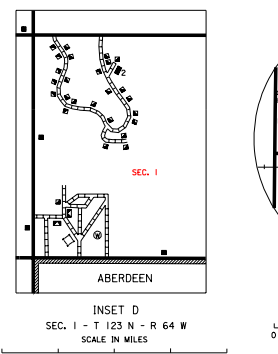
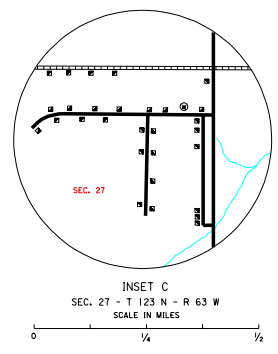
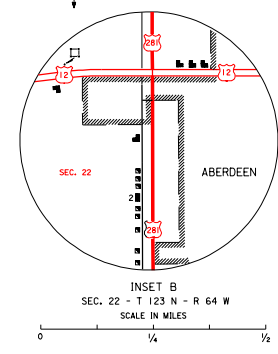
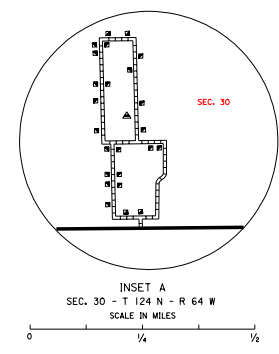
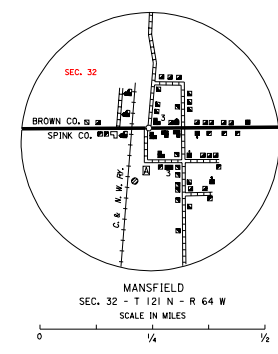
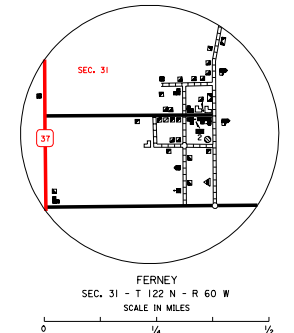
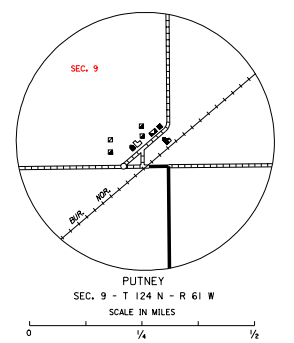
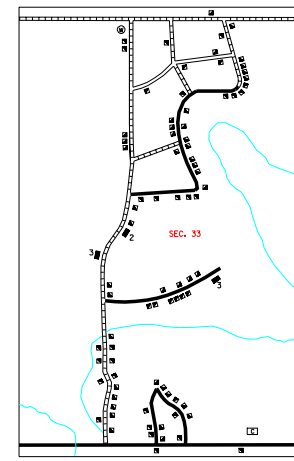


LEGEND

INTERSTATE HIGHWAY (FULL CONTROL OF ACCESS)		UNINCORPORATED VILLAGE OR AREA OF CONGESTED CULTURE	
U.S. NUMBERED HIGHWAY		INCORPORATED CITY OR VILLAGE (FIGURES INDICATED 1990 POPULATION)	
STATE NUMBERED HIGHWAY		FOREST RANGER STATION	
PRIMITIVE ROAD		BATHING BEACH OR SWIMMING POOL	
UNIMPROVED ROAD		PLAYGROUND, BALL FIELD, ETC.	
GRAVEL AND DRAINED ROAD		CAMP SITE, NO PERMANENCE	
GRAVEL OR STONE SURFACED ROAD		PONIC GROUND	
HARD SURFACED ROAD		SCENIC SITE	
DIVIDED HIGHWAY (WITH FRONTAGE ROAD)		TOURIST COURT OR MOTEL	
INTERCHANGE		CAMP OR LODGE	
HIGHWAY GRADE SEPARATION		FISH HATCHERY	
POINTS BETWEEN WHICH DISTANCES ARE MEASURED INDICATED THIS WAY		REST AREA	
RAILROADS IN JUNCTIION		GOLF COURSE OR COUNTRY CLUB	
TWO OR MORE TRACKS OF SEPARATELY OPERATED COMPANIES ON ADJACENT RIGHT-OF-WAY		AMUSEMENT HALL OR PARK	
RAILROAD CROSSINGS		SMALL PARK (SP - STATE, MP - WAYSIDE PARK, MP - MUNICIPAL PARK)	
RAILROAD ABOVE		FARMING, RACE COURSE, SPEEDWAY	
RAILROAD BELOW		DRIVE-IN THEATRE	
AIRPORT WITH SURFACED RUNWAYS		FARM UNIT	
MILITARY FIELD		DWELLING (OTHER THAN FARM)	
AIRPORT, COMPLETE FACILITIES (COMMERCIAL OR MUNICIPAL)		ROW OR GROUPS OF DWELLINGS CLOSELY SPACED	
ARFIELD, LIMITED FACILITIES		COMBINED DWELLING AND STORE OR SMALL BUSINESS	
LANDING AREA OR STRIP		DWELLING, BUSINESS, AND FILING STATION	
HELIOPAD PRIVATE AIR FIELDS		DWELLING, BUSINESS, FILING STATION, AND POST OFFICE	
ARRAY LIGHT BEACON (GENERAL)		STATE PORT OF ENTRY OR HIGH STATION	
NARROW STREAM		SEASONAL OR SUMMER COLONY DWELLING	
WIDE STREAM (ENTERTAINMENT NAVIGATION)		SEASONAL DWELLINGS CLOSELY SPACED	
DRAINAGE DITCH (MAIN)		CHURCH - OTHER RELIGIOUS INSTITUTION	
IRRIGATION DITCH		CEMETERY	
RESERVOIR, POND OR LAKE		CHURCH WITH CEMETERY ADJACENT	
RESERVOIR, WITH DAM		STORE OR SMALL BUSINESS ESTABLISHMENT	
MINE		FACTORY OR INDUSTRIAL PLANT	
DAW		DRINKING OR PUMPING STATION (GENERAL)	
DOCK, PIER, OR LANDING		STOCK YARD - LOADING PEN OR CORRAL	
HIGHWAY BRIDGE (OVER 20 FT. IN LENGTH)		GRAVEL PIT	
HIGHWAY BRIDGES (CLOSELY SPACED)		GRAIN ELEVATOR	
STEEL TRUSS BRIDGE LARGE		WAREHOUSE (GENERAL) 100 FT. AND OVER	
CANTILEVER BRIDGE		NURSERY	
FORD - ROAD ESTABLISHED		SCHOOLHOUSE	
CONCRETE FORD		CONSOLIDATION OR LARGE SCHOOL	
CAUSEWAY		OTHER EDUCATIONAL INSTITUTION	
CATTLE GUARD		TORNHALL, ORANGE, OR COMMUNITY HALL	
PROMONT ELEVATION		ADMINISTRATION BUILDING	
STATE LINE		POST OFFICE	
COUNTY LINE		HIGHWAY GARAGE (STATE OR FEDERAL)	
CONGRESSIONAL TOWNSHIP LINE		WATER SUPPLY STAND PIPE OR TANK	
SECTION LINE		COMMUNICATION TOWER - TELEPHONE, WEA, ETC.	
FEDERAL AND STATE RESERVATION BOUNDARY LINE		POWER SUBSTATION	
COUNTY SEAT		RADIO OR TV STATION (WITH CALL LETTERS)	
OTHER CITIES AND VILLAGES		RADIO RANGE STATION	
		GARBAGE OR RUBBISH DUMP	
		TRIANGULATION STATION	
		SEWAGE DISPOSAL PLANT	
		LOCATION OF CULTURE WHERE MAP SCALE DOES NOT PERMIT PLACING OF SYMBOL	

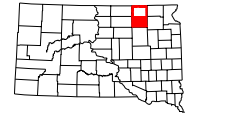


GENERAL HIGHWAY MAP
SOUTH HALF
BROWN COUNTY
SOUTH DAKOTA

prepared by the
SOUTH DAKOTA DEPARTMENT OF TRANSPORTATION
in cooperation with the
U.S. DEPARTMENT OF TRANSPORTATION
FEDERAL HIGHWAY ADMINISTRATION

SCALE
0 1 2 3 4 5 MILES

2006



UNIVERSAL TRANSVERSE MERCATOR PROJECTION

SOUTH HALF BROWN COUNTY SOUTH DAKOTA

SOUTH DAKOTA BROWN COUNTY SOUTH HALF GENERAL HIGHWAY MAP