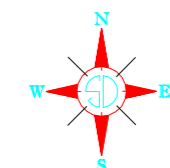
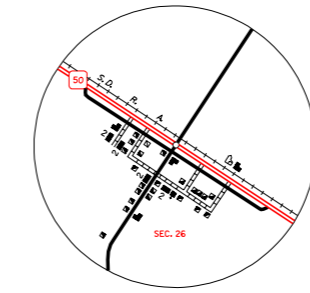
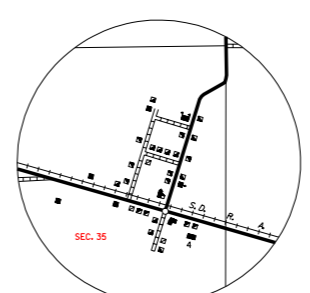


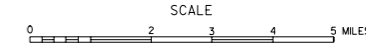
LEGEND

- INTERSTATE HIGHWAY (FULL CONTROL OF ACCESS) ————
- U.S. NUMBERED HIGHWAY ————
- STATE NUMBERED HIGHWAY ————
- PRIMITIVE ROAD ————
- UNIMPROVED ROAD ————
- GRAVEL OR DRAINED ROAD ————
- GRAVEL OR STONE SURFACED ROAD ————
- HARD SURFACED ROAD ————
- DIVIDED HIGHWAY (WITH FRONTAGE ROAD) ————
- INTERCHANGE ————
- HIGHWAY GRADE SEPARATION ————
- POINTS BETWEEN WHICH DISTANCES ARE MEASURED INDICATED THIS ————
- RAILROAD ————
- RAILROADS IN JUNCTATION ————
- TWO OR MORE TRACKS OF SEPARATELY OPERATED COMPANIES ON ADJACENT RIGHT-OF-WAY ————
- RAILROAD CROSSINGS ————
- RAILROAD ABOVE ————
- RAILROAD BELOW ————
- RAILROAD WITH SURFACED RUNWAYS ————
- MILITARY FIELD ————
- AIRPORT, COMPLETE FACILITIES (COMMERCIAL OR MUNICIPAL) ————
- ARFIELD, LIMITED FACILITIES ————
- LANDING AREA OR STRIP INCLUDING PRIVATE AIR FIELDS ————
- AIRWAY LIGHT BEACON (GENERAL) ————
- NARROW STREAM ————
- WIDE STREAM (INTERMITTENT NAVIGATION) ————
- DRAINAGE DITCH (MAIN) ————
- IRRIGATION DITCH ————
- RESERVOIR, POND OR LAKE ————
- RESERVOIR, WITH DAM ————
- DAM ————
- MARSH OR SWAMP LAND ————
- DOCK, PIER, OR LANDING ————
- HIGHWAY BRIDGE (OVER 20 FT. IN LENGTH) ————
- HIGHWAY BRIDGES CLOSELY SPACED ————
- STEEL TRUSS BRIDGE LARGE ————
- CANTILEVER BRIDGE ————
- FORD - ROAD ESTABLISHED ————
- CONCRETE FORD ————
- CAUSEWAY ————
- CATTLE GUARD ————
- PROMINENT ELEVATION ————
- STATE LINE ————
- COUNTY LINE ————
- CONGRESSIONAL TOWNSHIP LINE ————
- SECTION LINE ————
- FEDERAL AND STATE RESERVATION BOUNDARY LINE ————
- MONUMENT (SMALL) ————
- COUNTY SEAT ————
- OTHER CITIES AND VILLAGES ————
- UNINCORPORATED VILLAGE OR AREA OF CONGESTED CULTURE ————
- INCORPORATED CITY OR VILLAGE (FIGURES INDICATED 1990 POPULATION) ————
- FOREST RANGER STATION ————
- BATHING BEACH OR SWIMMING POOL ————
- PLAYGROUND, BALL FIELD, ETC. ————
- CAMP SITE, NO PERMANENCE ————
- PICNIC GROUND ————
- SCENIC SITE ————
- TOURIST COURT OR MOTEL ————
- CAMP OR LODGE ————
- FISH HATCHERY ————
- REST AREA ————
- GOLF COURSE OR COUNTRY CLUB ————
- AMUSEMENT HALL OR PARK ————
- SMALL PARK (SP - STATE, MP - WAYSIDE PARK, MP - MUNICIPAL PARK) ————
- FARGROUND, RACE COURSE, SPEEDWAY ————
- DRIVE - IN THEATRE ————
- FARM UNIT ————
- DWELLING (OTHER THAN FARM) ————
- ROW OR GROUPS OF DWELLINGS CLOSELY SPACED ————
- COMBINED DWELLING AND STORE OR SMALL BUSINESS ————
- DWELLING, BUSINESS, AND FILLING STATION ————
- DWELLING, BUSINESS, FILLING STATION, AND POST OFFICE ————
- STATE PORT OF ENTRY OR WEIGH STATION ————
- SEASONAL OR SUMMER COLONY DWELLING ————
- SEASONAL DWELLINGS CLOSELY SPACED ————
- CHURCH - OTHER RELIGIOUS INSTITUTION ————
- CEMETARY ————
- CHURCH WITH CEMETARY ADJACENT ————
- STORE OR SMALL BUSINESS ESTABLISHMENT ————
- FACTORY OR INDUSTRIAL PLANT ————
- BUSINESS AND FILLING STATION ————
- BUSINESS AND POST OFFICE ————
- FILLING STATION ————
- MINE ————
- BULK PLANT ————
- GAUGING OR PUMPING STATION (GENERAL) ————
- STOCK YARD - LOADING PEN OR CORRAL ————
- GRAVEL PIT ————
- CRAN ELEVATOR ————
- WAREHOUSE (GENERAL) (GOVT. ADD. US OR STATE) ————
- NURSERY ————
- SCHOOLHOUSE ————
- CONSOLIDATED OR LARGE SCHOOL ————
- OTHER EDUCATIONAL INSTITUTION ————
- TOWNHALL, GRANGE, OR COMMUNITY HALL ————
- ADMINISTRATION BUILDING ————
- POST OFFICE ————
- HIGHWAY GARAGE (COUNTY, STATE OR FEDERAL) ————
- WATER SUPPLY STAND PIPE OR TANK ————
- COMMUNICATION TOWER - TELEPHONE, REA ETC. ————
- POWER SUBSTATION ————
- RADIO OR TV STATION (WITH CALL LETTERS) ————
- RADIO RANGE STATION ————
- GARBAGE OR RUBBISH DUMP ————
- SEWAGE DISPOSAL PLANT ————
- TRIANGULATION STATION ————
- LOCATION OF CULTURE WHERE MAP SCALE DOES NOT PERMIT PLACING OF SYMBOL ————
- AGRICULTURAL EXPERIMENT STATION ————

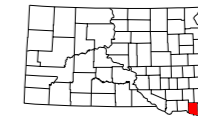


GENERAL HIGHWAY MAP CLAY COUNTY SOUTH DAKOTA

prepared by the
SOUTH DAKOTA DEPARTMENT OF TRANSPORTATION
in cooperation with the
U.S. DEPARTMENT OF TRANSPORTATION
FEDERAL HIGHWAY ADMINISTRATION



2006



UNIVERSAL TRANSVERSE MERCATOR PROJECTION

COPIES OF THIS MAP ARE AVAILABLE FOR PUBLIC USE AT A NOMINAL COST
S. D. Department of Transportation
Map Sales - Ph. (605) 773 3249
Pierre, South Dakota 57501