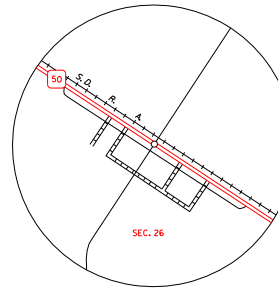


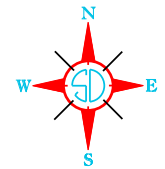
BURBANK SEC. 35 - T 92 N - R 51 W SCALE IN MILES



MECKLING SEC. 26 - T 92 N - R 53 W SCALE IN MILES

LEGEND

- INTERSTATE HIGHWAY (FULL CONTROL OF ACCESS)
U.S. NUMBERED HIGHWAY
STATE NUMBERED HIGHWAY
FEDERAL AID HIGHWAY SYSTEM
FEDERAL AID SECONDARY HIGHWAY SYSTEM
END OF FEDERAL AID DESIGNATED ROUTE
PRIMITIVE ROAD
UNIMPROVED ROAD
GRAVEL AND DRAINED ROAD
GRAVEL OR STONE SURFACED ROAD
PAVED SURFACED ROAD
DIVIDED HIGHWAY (WITH FRONTAGE ROAD)
INTERCHANGE
HIGHWAY GRADE SEPARATION
POINTS BETWEEN WHICH DISTANCES ARE MEASURED INDICATED THUS
RAILROAD
RAILROADS IN JUNCTURE
TWO OR MORE TRACKS BY SEPARATELY OPERATED COMPANIES ON ADJACENT RIGHT-OF-WAY
RAILROAD CROSSINGS
GRADE CROSSINGS
RAILROAD ABOVE
RAILROAD BELOW
AIRPORT WITH SURFACED RUNWAYS
MILITARY FIELD
AIRPORT, COMPLETE FACILITIES (COMMERCIAL OR MUNICIPAL)
AIRFIELD, LIMITED FACILITIES
LANDING AREA OR STRIP INCLUDING PRIVATE AIR FIELDS
AIRWAY LIGHT BEACON (GENERAL)
NARROW STREAM
WIDE STREAM (INTERMITTENT NAVIGATION)
DRAINAGE DITCH (MAIN)
WINDROW DITCH
FAS
RESERVOIR, POND OR LAKE
RESERVOIR, WITH DAM
DAM
MARSH OR SWAMP LAND
DOCK, PIER, OR LANDING
HIGHWAY BRIDGE (OVER 20 FT. IN LENGTH)
HIGHWAY BRIDGES CLOSELY SPACED
STEEL TRUSS BRIDGE LARGE
CANTILEVER BRIDGE
FORD - ROAD ESTABLISHED
CONCRETE FORD
CAUSEWAY
CATTLE GUARD
PROMINENT ELEVATION
STATE LINE
COUNTY LINE
CONGRESSIONAL TOWNSHIP LINE
SECTION LINE
FEDERAL AID STATE RESERVATION BOUNDARY LINE
MONUMENT (SMALL)
COUNTY SEAT
OTHER CITIES AND VILLAGES
UNINCORPORATED VILLAGE OR AREA OF CONGESTED CULTURE
INCORPORATED CITY OR VILLAGE (FIGURES INDICATED 1990 POPULATION)



GENERAL HIGHWAY MAP CLAY COUNTY SOUTH DAKOTA

prepared by the SOUTH DAKOTA DEPARTMENT OF TRANSPORTATION in cooperation with the U.S. DEPARTMENT OF TRANSPORTATION FEDERAL HIGHWAY ADMINISTRATION

SCALE 0 2 4 5 MILES

2012



UNIVERSAL TRANSVERSE MERCATOR PROJECTION

RESTRICTION OF LIABILITY: The South Dakota Department of Transportation makes no claims, promises or guarantees about the accuracy, completeness, or adequacy of the data and expressly disclaims liability for errors and omissions of the data content. No warranty of any kind, implied, expressed or statutory, including but not limited to the warranties of non-infringement of third party rights, title, merchantability and fitness for a particular purpose is given with respect to this data.

COPIES OF THIS MAP ARE AVAILABLE FOR PUBLIC USE AT A NOMINAL COST S.D. Department of Transportation Map Sales - PH: 605/773-3249 Map Sales - PH: 605/773-3249 Pierre, South Dakota 57501