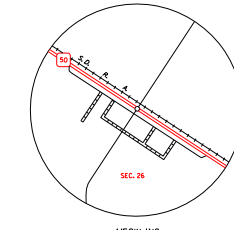


BURBANK  
SEC. 35 - T 92 N - R 51 W  
SCALE IN MILES  
0 1/4 1/2



MECKLING  
SEC. 26 - T 92 N - R 53 W  
SCALE IN MILES  
0 1/4 1/2

LEGEND

- INTERSTATE HIGHWAY (FULL CONTROL OF ACCESS)
- U.S. NUMBERED HIGHWAY
- STATE NUMBERED HIGHWAY
- FEDERAL HIGHWAY SYSTEM
- FEDERAL SECONDARY HIGHWAY SYSTEM
- END OF FEDERAL AD DESIGNATED ROUTE
- PRIMITIVE ROAD
- UNIMPROVED ROAD
- GRADED AND DRAINED ROAD
- GRAVEL OR STONE SURFACED ROAD
- HARD SURFACED ROAD
- OVERD HIGHWAY (WITH SURFACE MARKS)
- INTERCHANGE
- HIGHWAY GRADE SEPARATION
- POINTS BETWEEN WHICH DISTANCES ARE MEASURED INDICATED THIS
- RAILROAD
- RAILROADS IN JUNCTURE POSITION
- TWO OR MORE TRACKS OF SEPARATELY OPERATED COMPANIES ON ADJACENT RIGHT-OF-WAY
- RAILROAD CROSSINGS
- GRADE CROSSINGS
- RAILROAD ABOVE
- RAILROAD BELOW
- AIRPORT WITH SURFACED RUNWAYS
- MILITARY FIELD
- AIRPORT, COMPLETE FACILITIES (COMMERCIAL OR MUNICIPAL)
- AIRFIELD, LIMITED FACILITIES
- LANDING AREA OR STRIP (INCLUDING PRIVATE AIR FIELDS)
- MINOR LIGHT BEACON (FEDERAL)
- NARROW STREAM
- WIDE STREAM (INTERMITTENT NAVIGATION)
- DRAINAGE DITCH (MAIN)
- PROTECTION DITCH
- RESERVOIR, POND OR LAKE
- RESERVOIR, WITH DAM
- DAM
- MARSH OR SWAMP LAND
- DOCK, PIER, OR LANDING
- HIGHWAY BRIDGE (OVER 20 FT. IN LENGTH)
- HIGHWAY BRIDGES CLOSELY SPACED
- STEEL TRUSS BRIDGE LARGE
- CANTILEVER BRIDGE
- FORD - ROAD ESTABLISHED
- CONCRETE FORD
- CROSSWAY
- CATTLE GUARD
- PROMINENT ELEVATION
- STATE LINE
- COUNTY LINE
- CONGRESSIONAL TOWNSHIP LINE
- SECTION LINE
- FEDERAL AND STATE RESERVATION BOUNDARY LINE
- MONUMENT (SMALL)
- COUNTY SEAT
- OTHER CITIES AND VILLAGES
- UNINCORPORATED VILLAGE OR AREA OF CONGESTED CULTURE
- INCORPORATED CITY OR VILLAGE (FIGURES INDICATED FROM POPULATION)
- FIGURES INDICATED FROM POPULATION



GENERAL HIGHWAY MAP  
**CLAY COUNTY**  
SOUTH DAKOTA

prepared by the  
SOUTH DAKOTA DEPARTMENT OF TRANSPORTATION  
in cooperation with the  
U.S. DEPARTMENT OF TRANSPORTATION  
FEDERAL HIGHWAY ADMINISTRATION

SCALE  
0 1 2 3 4 5 MILES

2017



UNIVERSAL TRANSVERSE MERCATOR PROJECTION

RESTRICTION OF LIABILITY: The South Dakota Department of Transportation makes no claim, guarantee or warranty about the accuracy, completeness or timeliness of the data used in this map. The data used in this map is the property of the South Dakota Department of Transportation and is provided to you for informational purposes only. No warranty, of any kind, is made, expressed or implied, including but not limited to the representation of the accuracy of the data. The Department of Transportation makes no claim, guarantee or warranty about the accuracy, completeness or timeliness of the data used in this map. The data used in this map is the property of the South Dakota Department of Transportation and is provided to you for informational purposes only. No warranty, of any kind, is made, expressed or implied, including but not limited to the representation of the accuracy of the data.

COPIES OF THIS MAP ARE AVAILABLE FOR PUBLIC USE AT A NOMINAL COST  
S. D. Department of Transportation  
Map Sale - (605) 717-2249  
Pierre, South Dakota 57501