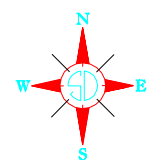
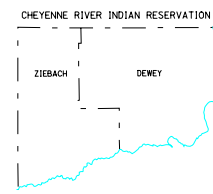
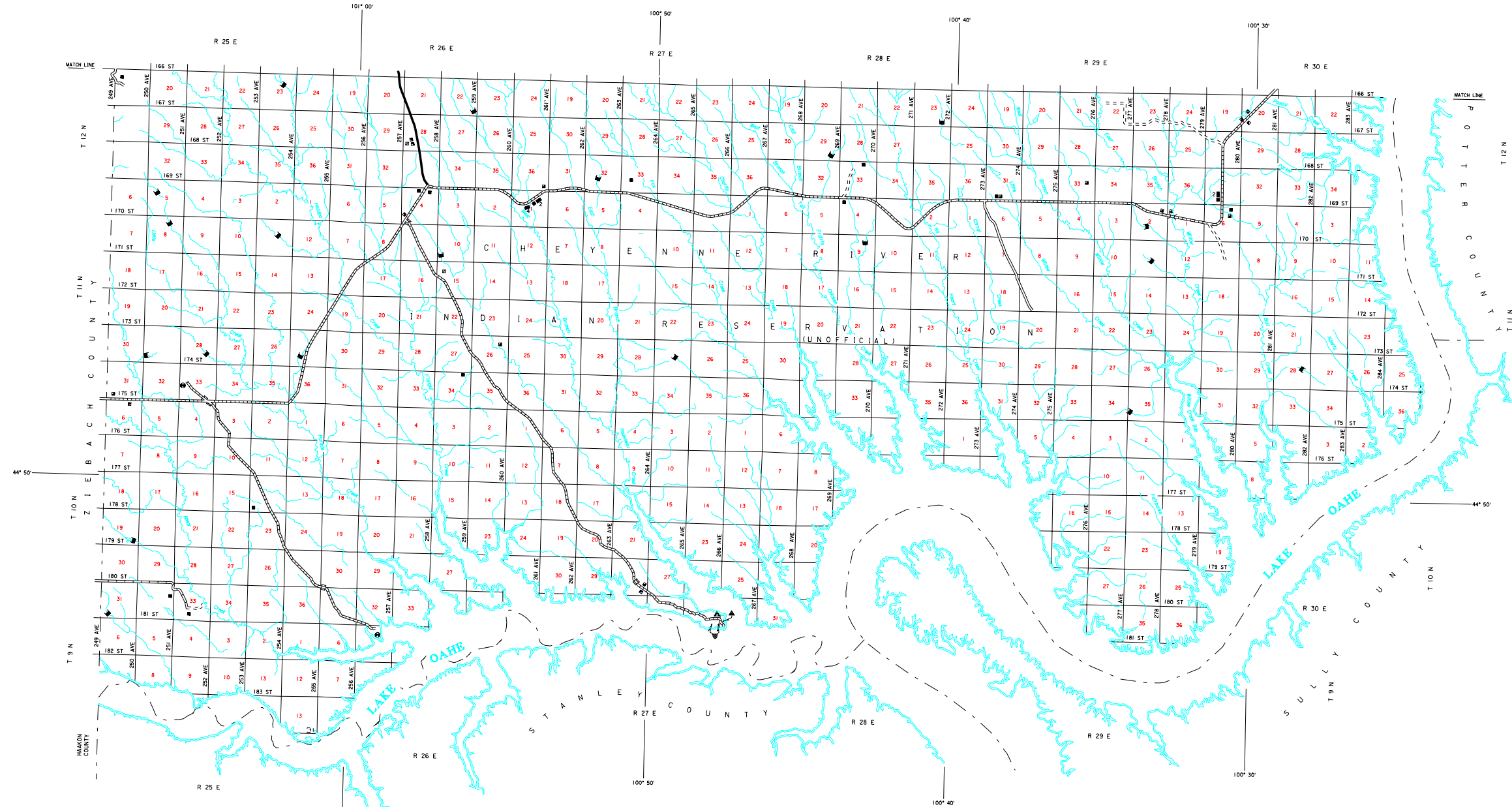


LEGEND

INTERSTATE HIGHWAY (FULL CONTROL OF ACCESS)		UNINCORPORATED VILLAGE OR AREA OF CONGESTED CULTURE	
U.S. NUMBERED HIGHWAY		INCORPORATED CITY OR VILLAGE (FIGURES INDICATED 1990 POPULATION)	
STATE NUMBERED HIGHWAY		FOREST RANGER STATION	
PRIMITIVE ROAD		BATHING BEACH OR SWIMMING POOL	
UNIMPROVED ROAD		PLAYGROUND, BALL FIELD, ETC.	
GRAVEL OR STONE SURFACED ROAD		CAMP SITE, NO PERMANENCE	
ROAD SURFACED ROAD		PICNIC GROUND	
DIVIDED HIGHWAY (LEFT EBONITAGE ROAD)		SCENIC SITE	
INTERCHANGE		TOURIST COURT OR MOTEL	
HIGHWAY GRADE SEPARATION		CAMP OR LODGE	
POINTS BETWEEN WHICH DISTANCES ARE MEASURED INDICATED THUS		FISH HATCHERY	
RAILROAD		REST AREA	
RAILROADS IN JUNCTATION		GOLF COURSE OR COUNTY CLUB	
TWO OR MORE TRACKS OF SEPARATELY OPERATED COMPANIES ON ADJACENT RIGHT-OF-WAY		AMUSEMENT HALL OR PARK	
RAILROAD CROSSINGS		SMALL PARK (SP - STATE, WP - WAYSIDE PARK, MP - MUNICIPAL PARK)	
RAILROAD ABOVE		FARMGROUND, RACE COURSE, SPEEDWAY	
RAILROAD BELOW		DRIVE - IN THEATRE	
AIRPORT WITH SURFACED RUNWAYS		FARM UNIT	
MILITARY FIELD		DWELLING (OTHER THAN FARM)	
AIRPORT, COMPLETE FACILITIES (COMMERCIAL OR MUNICIPAL)		ROW OR GROUPS OF DWELLINGS CLOSELY SPACED	
ARMPFIELD, LIMITED FACILITIES		COMBINED DWELLING AND STORE OR SMALL BUSINESS	
LANDING AREA OR STRIP INCLUDING PRIVATE AIR FIELDS		DWELLING, BUSINESS, AND FILLING STATION	
ARRAY LIGHT BEACON (GENERAL)		DWELLING, BUSINESS, FILLING STATION, AND POST OFFICE	
NARROW STREAM		STATE PORT OF ENTRY OR HIGH STATION	
WIDE STREAM (INTERMITTENT NAVIGATION)		SEASONAL OR SUMMER COLONY DWELLING	
DRAINAGE DITCH (MAIN)		SEASONAL DWELLINGS CLOSELY SPACED	
IRRIGATION DITCH		CHURCH - OTHER RELIGIOUS INSTITUTION	
RESERVOIR, POND OR LAKE		CEMETARY	
RESERVOIR, WITH DAM		CHURCH WITH CEMETARY ADJACENT	
DAM		STORE OR SMALL BUSINESS ESTABLISHMENT	
MARSH OR SWAMP LAND		FACTORY OR INDUSTRIAL PLANT	
DOCK, PIER, OR LANDING		BUSINESS AND FILLING STATION	
HIGHWAY BRIDGE (OVER 20 FT. IN LENGTH)		BUSINESS AND POST OFFICE	
HIGHWAY BRIDGES CLOSELY SPACED		FILLING STATION	
STEEL TRUSS BRIDGE LARGE		MINE	
CANTILEVER BRIDGE		BULK PLANT	
FORD - ROAD ESTABLISHED		CAULDRON OR PUMPING STATION (GENERAL)	
CONCRETE FORD		STOCK YARD - LOADING PEN OR CORRAL	
CAUSEWAY		GRAVEL PIT	
CATTLE GUARD		GRAIN ELEVATOR	
PROMINENT ELEVATION		WAREHOUSE (GENERAL) GOV'T., ADD US OR STATE	
STATE LINE		WAREHOUSE	
COUNTY LINE		SCHOOLHOUSE	
CONGRESSIONAL TOWNSHIP LINE		CONSOLIDATED OR LARGE SCHOOL	
SECTION LINE		OTHER EDUCATIONAL INSTITUTION	
FEDERAL AND STATE RESERVATION BOUNDARY LINE		TOWNHALL, ORANGE, OR COMMUNITY HALL	
MONUMENT (SMALL)		ADMINISTRATION BUILDING	
COUNTY SEAT		POST OFFICE (COUNTY, STATE OR FEDERAL)	
OTHER CITIES AND VILLAGES		HIGHWAY GARAGE (COUNTY, STATE OR FEDERAL)	
		WATER SUPPLY STAND PIPE OR TANK	
		COMMUNICATION TOWER - TELEPHONE, WEA ETC.	
		POWER SUBSTATION	
		RADIO OR TV STATION (WITH CALL LETTERS)	
		RADIO RANGE STATION	
		GARIBAGE OR RUBBISH DUMP	
		SEWAGE DISPOSAL PLANT	
		TRIANGULATION STATION	
		LOCATION OF CULTURE WHERE MAP SCALE DOES NOT PERMIT PLACING OF SYMBOL	

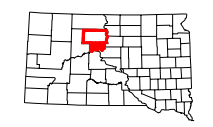


GENERAL HIGHWAY MAP  
SOUTH HALF  
**DEWEY COUNTY**  
SOUTH DAKOTA

prepared by the  
SOUTH DAKOTA DEPARTMENT OF TRANSPORTATION  
in cooperation with the  
U.S. DEPARTMENT OF TRANSPORTATION  
FEDERAL HIGHWAY ADMINISTRATION



2006



UNIVERSAL TRANSVERSE MERCATOR PROJECTION

U.S. and State numbered Highways and  
the Federal-Aid Primary and Federal-Aid  
Secondary systems as of Dec. 31, 1985

COPIES OF THIS MAP ARE AVAILABLE  
FOR PUBLIC USE AT A NOMINAL COST  
S.D. Department of Transportation  
Map Sales - (605) 773-3249  
Pierre, South Dakota 57501

CADD PRODUCED  
BY  
CARTOGRAPHIC  
SECTION  
SOUTH DAKOTA  
DEPARTMENT OF TRANSPORTATION