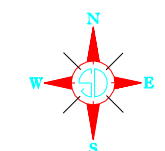
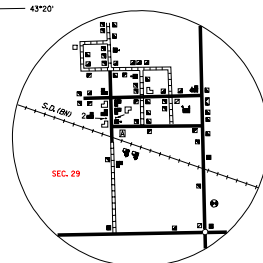
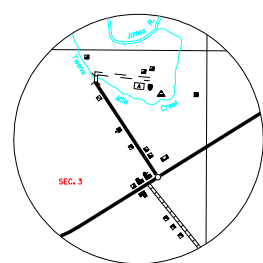


LEGEND

- INTERSTATE HIGHWAY (FULL CONTROL OF ACCESS)
- U.S. NUMBERED HIGHWAY
- STATE NUMBERED HIGHWAY
- PRIMITIVE ROAD
- UNIMPROVED ROAD
- GRAVEL OR GRADED ROAD
- GRAVEL OR STONE SURFACED ROAD
- HARD SURFACED ROAD
- DIVIDED HIGHWAY (WITH FRONTAGE ROAD)
- INTERCHANGE
- HIGHWAY GRADE SEPARATION
- POINTS BETWEEN WHICH DISTANCES ARE MEASURED INDICATED THIS
- RAILROADS IN JUNCTION
- RAILROADS IN ADJUNCTION
- RAILROAD CROSSINGS
- RAILROAD ABOVE
- RAILROAD BELOW
- AIRPORT WITH SURFACED RUNWAYS
- MILITARY FIELD
- APPROPRIATE COMPLETE FACILITIES (COMMERCIAL OR MUNICIPAL)
- APPROPRIATE LIMITED FACILITIES
- LANDING AREA OR STRIP
- AIRWAY LIGHT BEACON (GENERAL)
- NARROW STREAM
- WIDE STREAM (INTERMITTENT NAVIGATION)
- DRAINAGE DITCH (MAIN)
- IRRIGATION DITCH
- RESERVOIR, POND OR LAKE
- RESERVOIR, WITH DAM
- DAM
- MARSH OR SWAMP LAND
- DOCK, PIER, OR LANDING
- HIGHWAY BRIDGE (OVER 20 FT. IN LENGTH)
- HIGHWAY BRIDGES CLOSELY SPACED
- STEEL TRUSS BRIDGE (LARGE)
- CANTILEVER BRIDGE
- FORD - ROAD ESTABLISHED
- CONCRETE FORD
- CAUSEWAY
- CATTLE GUARD
- PROMINENT ELEVATION
- STATE LINE
- COUNTY LINE
- CONGRESSIONAL TOWNSHIP LINE
- SECTION LINE
- FEDERAL AND STATE RESERVATION BOUNDARY LINE
- MONUMENT (SMALL)
- COUNTY SEAT
- OTHER CITIES AND VILLAGES
- UNINCORPORATED VILLAGE OR AREA OF CONGESTED CULTURE
- INCORPORATED CITY OR VILLAGE (FIGURES INDICATED 1990 POPULATION)
- FOREST RANGER STATION
- BATHING BEACH OR SWIMMING POOL
- PLAYGROUND, BALL FIELD, ETC.
- CAMP SITE, NO PERMANENCE
- POCK-GRASS
- SCENIC SITE
- TOURIST COURT OR MOTEL
- CAMP OR LODGE
- FISH HATCHERY
- REST AREA - COUNTY CLUB
- AMUSEMENT HALL OR PARK
- SMALL PARK (SP - STATE, WP - WAYSIDE PARK, MP - MUNICIPAL PARK)
- FARM UNIT
- DWELLING (OTHER THAN FARM)
- ROW OR GROUPS OF DWELLINGS CLOSELY SPACED
- COMBINED DWELLING AND STORE OR SMALL BUSINESS
- DWELLING, BUSINESS, AND FILING STATION
- STATE PORT OF ENTRY OR NEIGH STATION
- SEASONAL OR SUMMER COLONY DWELLING
- SEASONAL DWELLINGS CLOSELY SPACED
- CHURCH - OTHER RELIGIOUS INSTITUTION
- CEMETARY
- CHURCH WITH CEMETARY ADJACENT
- STORE OR SMALL BUSINESS ESTABLISHMENT
- FACTORY OR INDUSTRIAL PLANT
- BUSINESS AND FILING STATION
- BUSINESS AND POST OFFICE
- FILING STATION
- MINE
- BULK PLANT
- GASOLINE OR PUMPING STATION (GENERAL)
- STOCK TANK - LOADING PEN OR CORRAL
- GRAVEL PIT
- GRAN ELEVATOR
- WAREHOUSE (GENERAL) GOVT., ADD. US OR STATE
- NURSERY
- SCHOOLHOUSE
- CONSOLIDATED OR LARGE SCHOOL
- OTHER EDUCATIONAL INSTITUTION
- TOWNHALL, GRANGE, OR COMMUNITY HALL
- ADMINISTRATION BUILDING
- POST OFFICE
- HIGHWAY GARAGE (COUNTY, STATE OR FEDERAL)
- WATER SUPPLY STAND PIPE OR TANK
- COMMUNICATION TOWER - TELEPHONE, REA, ETC.
- POWER SUBSTATION
- RADIO OR TV STATION (WITH CALL LETTERS)
- RADIO RANGE STATION
- GARAGE OR RUBBER STAMP
- SEWAGE DISPOSAL PLANT
- TRANSLATION STATION
- LOCATION OF CULTURE WHERE MAP SCALE DOES NOT PERMIT PLACING OF SYMBOL
- TELEPHONE EXCHANGE BUILDING
- PUMPING STATION (OIL OR GAS)



GENERAL HIGHWAY MAP HUTCHINSON COUNTY SOUTH DAKOTA

prepared by the SOUTH DAKOTA DEPARTMENT OF TRANSPORTATION in cooperation with the U.S. DEPARTMENT OF TRANSPORTATION FEDERAL HIGHWAY ADMINISTRATION

SCALE 0 1 2 3 4 5 MILES

2006



UNIVERSAL TRANSVERSE MERCATOR PROJECTION