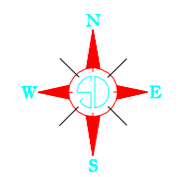
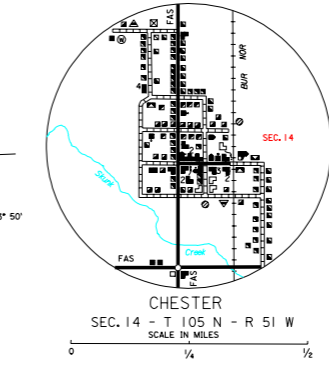
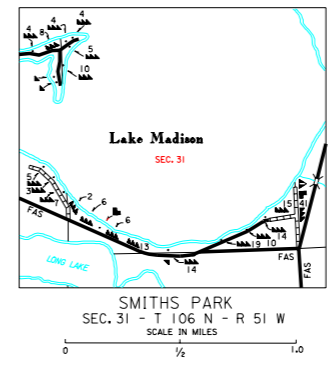
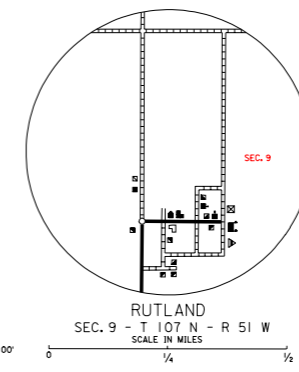
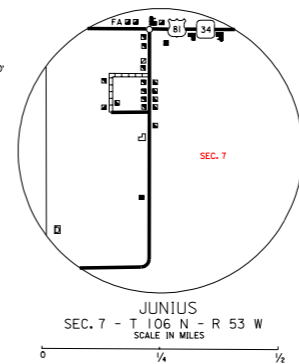


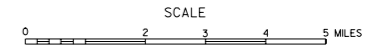
LEGEND

INTERSTATE HIGHWAY (FULL CONTROL OF ACCESS)		UNINCORPORATED VILLAGE OR AREA OF CONGESTED CULTURE	
U.S. NUMBERED HIGHWAY		INCORPORATED CITY OR VILLAGE (FIGURES INDICATED 1990 POPULATION)	
STATE NUMBERED HIGHWAY		FOREST RANGER STATION	
PRIMITIVE ROAD		BATHING BEACH OR SWIMMING POOL	
UNIMPROVED ROAD		PLAYGROUND, BALL FIELD, ETC.	
GRADED AND DRAINED ROAD		CAMP SITE, NO PERMANENCE	
GRAVEL OR STONE SURFACED ROAD		PICNIC GROUND	
HARD SURFACED ROAD		SCENIC SITE	
DIVIDED HIGHWAY (WITH FRONTAGE ROAD)		INTERCHANGE	
POINT BETWEEN WHICH DISTANCES ARE MEASURED INDICATED THIS		TOURIST COURT OR MOTEL	
HIGHWAY GRADE SEPARATION		CAMP OR LODGE	
RAILROAD		FISH HATCHERY	
RAILROADS IN JUNCTURE POSITION TWO OR MORE TRACKS OF SEPARATELY OPERATED COMPANIES ON ADJACENT RIGHT-OF-WAY		REST AREA	
RAILROAD CROSSINGS		BOAT HOUSE OR COUNTRY CLUB	
GRADE CROSSINGS		AMUSEMENT HALL OR PARK	
RAILROAD ABOVE		SMALL PARK (SP - STATE, NP - NAYSIDE PARK, MP - MUNICIPAL PARK)	
RAILROAD BELOW		FARMGROUNDS, RACE COURSE, SPEEDWAY	
AIRPORT WITH SURFACED RUNWAYS		DRIVE-IN THEATRE	
MILITARY FIELD		FARM UNIT	
ARRIVAL, COMPLETE FACILITIES (COMMERCIAL OR MUNICIPAL)		DWELLING (OTHER THAN FARM)	
ARRIVAL, LIMITED FACILITIES		ROW OR GROUPS OF DWELLINGS CLOSELY SPACED	
LANDING AREA OR STRIP INCLUDING PRIVATE AIR FIELDS		COMBINED DWELLING AND STORES OR SMALL BUSINESS	
AIRWAY LIGHT BEACON (GENERAL)		DWELLING, BUSINESS, AND FILING STATION	
NARROW STREAM		DWELLING, BUSINESS, FILING STATION, AND POST OFFICE	
WIDE STREAM (INTERMITTENT NAVIGATION)		STATE PORT OF ENTRY OR WEIGH STATION	
DRAINAGE DITCH (MAIN)		SEASONAL OR SUMMER COLONY DWELLING	
IRRIGATION DITCH		SEASONAL DWELLINGS CLOSELY SPACED	
RESERVOIR, POND OR LAKE		CHURCH - OTHER RELIGIOUS INSTITUTION	
RESERVOIR, WITH DAM		CEMETARY	
DAM		CHURCH WITH CEMETARY ADJACENT	
DOCK, PIER, OR LANDING		STORE OR SMALL BUSINESS ESTABLISHMENT	
HIGHWAY BRIDGE (OVER 20 FT. IN LENGTH)		FACTORY OR INDUSTRIAL PLANT	
HIGHWAY BRIDGES CLOSELY SPACED		BUSINESS AND FILING STATION	
STEEL TRUSS BRIDGE LARGE		BUSINESS AND POST OFFICE	
CANTILEVER BRIDGE		FILING STATION	
FORD - ROAD ESTABLISHED		MINE	
CONCRETE FORD		BULK PLANT	
CAUSEWAY		Gauging or Pumping Station (General)	
PROMINENT ELEVATION		STOCK YARD - LOADING PEN OR CORRAL	
STATE LINE		GRAVEL PIT	
COUNTY LINE		GRAIN ELEVATOR	
CONGRESSIONAL TOWNSHIP LINE		WAREHOUSE (GENERAL) GOV'T. ADD. USE OR STATE	
SECTION LINE		SCHOOLHOUSE	
FEDERAL AND STATE RESERVATION BOUNDARY LINE		CONSOLIDATED OR LARGE SCHOOL	
MONUMENT (SMALL)		OTHER EDUCATIONAL INSTITUTION	
COUNTY SEAT		TOWNHALL, GRANGE, OR COMMUNITY HALL	
OTHER CITIES AND VILLAGES		ADMINISTRATION BUILDING	
		POST OFFICE	
		HIGHWAY GARAGE (COUNTY, STATE OR FEDERAL)	
		WATER SUPPLY STAND PIPE OR TANK	
		COMMUNICATION TOWER - TELEPHONE, REA ETC.	
		POWER SUBSTATION	
		RADIO OR TV STATION (WITH CALL LETTERS)	
		RADIO RANGE STATION	
		GARAGE OR RUBBER DUMP	
		SEWER DISPOSAL PLANT	
		TRANSLATION STATION	
		LOCATION OF CULTURE WHERE MAP SCALE DOES NOT PERMIT PLACING OF SYMBOL	



GENERAL HIGHWAY MAP
LAKE COUNTY
SOUTH DAKOTA

prepared by the
SOUTH DAKOTA DEPARTMENT OF TRANSPORTATION
in cooperation with the
U.S. DEPARTMENT OF TRANSPORTATION
FEDERAL HIGHWAY ADMINISTRATION



2006



UNIVERSAL TRANSVERSE MERCATOR PROJECTION
U.S. and State numbered Highways and
the Federal-Aid Primary and Federal-Aid
Secondary systems as of Aug. 31, 1986

COPIES OF THIS MAP ARE AVAILABLE
FOR PUBLIC USE AT A NOMINAL COST
S. D. Department of Transportation
Map Sales - Ph. (605) 773-3249
Pierre, South Dakota 57501