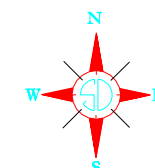
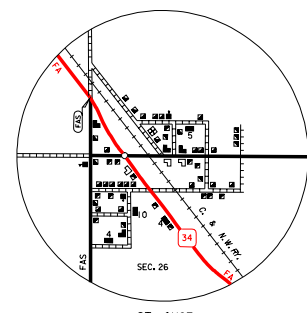
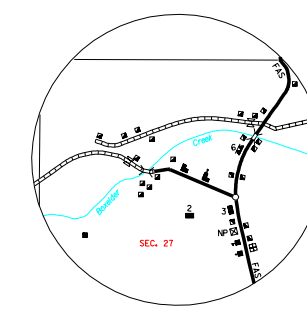
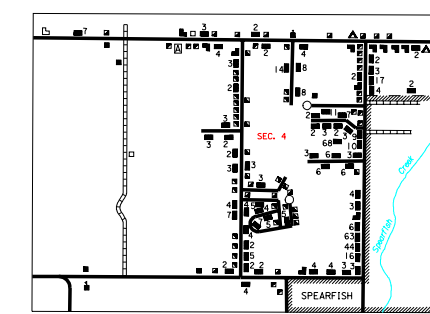


LEGEND

- INTERSTATE HIGHWAY (FULL CONTROL OF ACCESS)
- U.S. NUMBERED HIGHWAY
- STATE NUMBERED HIGHWAY
- PRIMITIVE ROAD
- UNIMPROVED ROAD
- GRAVEL AND DRAINED ROAD
- GRAVEL OR STONE SURFACED ROAD
- HARD SURFACED ROAD
- DIVIDED HIGHWAY (WITH FRONTAGE ROAD)
- INTERCHANGE
- HIGHWAY GRADE SEPARATION
- POINTS BETWEEN WHICH DISTANCES ARE MEASURED INDICATED THUS
- RAILROAD
- RAILROADS IN JUNCTURE POSITION
- TWO OR MORE TRACKS OF SEPARATELY OPERATED COMPANIES ON ADJACENT RIGHT-OF-WAY
- RAILROAD CROSSINGS
- RAILROAD ABOVE
- RAILROAD BELOW
- AIRPORT WITH SURFACED RUNWAYS
- MILITARY FIELD
- AIRPORT, COMPLETE FACILITIES (COMMERCIAL OR MUNICIPAL)
- AIRFIELD, LIMITED FACILITIES
- LANDING AREA OR STRIP
- INCLUDING PRIVATE AIR FIELDS
- ARRAY LIGHT BEACON (GENERAL)
- NARROW STREAM
- WIDE STREAM (INTERMITTENT NAVIGATION)
- DRAINAGE DITCH (MAIN)
- IRRIGATION DITCH
- RESERVOIR, POND OR LAKE
- RESERVOIR, WITH DAM
- DAM
- MARSH OR SWAMP LAND
- DOCK, PIER, OR LANDING
- HIGHWAY BRIDGE (OVER 20 FT. IN LENGTH)
- HIGHWAY BRIDGES CLOSELY SPACED
- STEEL TRUSS BRIDGE LARGE
- CANTILEVER BRIDGE
- FORD - ROAD ESTABLISHED
- CONCRETE FORD
- CAUSEWAY
- CATTLE GUARD
- PROMINENT ELEVATION
- STATE LINE
- COUNTY LINE
- CONGRESSIONAL TOWNSHIP LINE
- RANGE LINE
- FEDERAL AND STATE RESERVATION BOUNDARY LINE
- MONUMENT (SMALL)
- COUNTY SEAT
- OTHER CITIES AND VILLAGES
- UNINCORPORATED VILLAGE OR AREA OF CONGESTED CULTURE
- INCORPORATED CITY OR VILLAGE (FIGURES INDICATED 1990 POPULATION)
- FOREST RANGER STATION
- BATHING BEACH OR SWIMMING POOL
- PLAYGROUND, BALL FIELDS, ETC.
- CAMP SITE, NO PERMANENCE
- PICNIC GROUND
- SCENIC SITE
- TOURIST COURT OR MOTEL
- CAMP OR LODGE
- FISH HATCHERY
- REST AREA
- GOLF COURSE OR COUNTRY CLUB
- AMUSEMENT HALL OR PARK
- SMALL PARK (SP - STATE, MP - WAYSIDE PARK, MP - MUNICIPAL PARK)
- FARMS, RACE COURSE, SPEEDWAY
- DRIVE-IN THEATRE
- FARM UNIT
- DWELLING (OTHER THAN FARM)
- ROW OR GROUPS OF DWELLINGS CLOSELY SPACED
- COMBINED DWELLING AND STORE OR SMALL BUSINESS
- DWELLING, BUSINESS, AND FILING STATION
- DWELLING, BUSINESS, FILING STATION, AND POST OFFICE
- STATE PORT OF ENTRY OR HIGH STATION
- SEASONAL OR SUMMER GOLF DWELLING
- SEASONAL DWELLINGS CLOSELY SPACED
- CHURCH - OTHER RELIGIOUS INSTITUTION
- CEMETERY
- CHURCH WITH CEMETERY ADJACENT
- STORE OR SMALL BUSINESS ESTABLISHMENT
- FACTORY OR INDUSTRIAL PLANT
- BUSINESS AND FILING STATION
- BUSINESS AND POST OFFICE
- FILING STATION
- MINE
- BLK PLANT
- GAUGING OR PUMPING STATION (GENERAL)
- STOCK YARD - LOADING PEN OR CORRAL
- GRAVEL PIT
- GRAN ELEVATOR
- WAREHOUSE (GENERAL) GOV'T. ADD US OR STATE
- NUCLEUS
- SCHOOLHOUSE
- FORD - ROAD ESTABLISHED
- OTHER EDUCATIONAL INSTITUTION
- TOWNHALL, GRANGE, OR COMMUNITY HALL
- ADMINISTRATION BUILDING
- POST OFFICE
- HIGHWAY GARAGE (COUNTY, STATE OR FEDERAL)
- WATER SUPPLY STAND PIPE OR TANK
- COMMUNICATION TOWER - TELEPHONE, REA ETC.
- POWER SUBSTATION
- RADIO OR TV STATION (WITH CALL LETTERS)
- RADIO RANGE STATION
- GARBAGE OR RUBBISH DUMP
- SEWAGE DISPOSAL PLANT
- TRANSLATION STATION
- LOCATION OF CULTURE WHERE MAP SCALE DOES NOT PERMIT PLACING OF SYMBOL



GENERAL HIGHWAY MAP
LAWRENCE COUNTY
SOUTH DAKOTA

prepared by the
 SOUTH DAKOTA DEPARTMENT OF TRANSPORTATION
 in cooperation with the
 U.S. DEPARTMENT OF TRANSPORTATION
 FEDERAL HIGHWAY ADMINISTRATION



2006



UNIVERSAL TRANSVERSE MERCATOR PROJECTION
 U.S. and State numbered Highways and
 the Federal-Aid Primary and Federal-Aid
 Secondary systems as of May 31, 1986

COPIES OF THIS MAP ARE AVAILABLE
 FOR PUBLIC USE AT A NOMINAL COST
 S.D. Department of Transportation
 Map Sales - PA 6651773 3249
 Pierre, South Dakota 57501