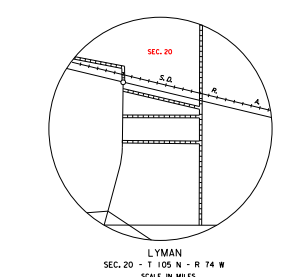
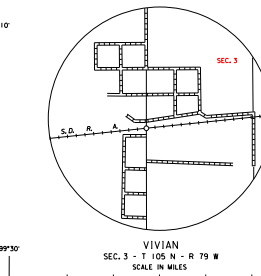
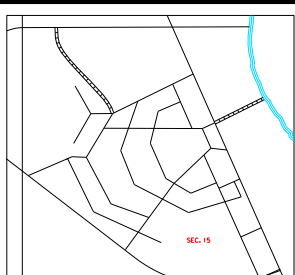
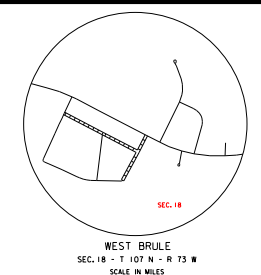


LEGEND

INTERSTATE HIGHWAY (FULL CONTROL OF ACCESS)		NARROW STREAM	
U.S. NUMBERED HIGHWAY		WIDE STREAM (INTERMITTENT NAVIGATION)	
STATE NUMBERED HIGHWAY		DRAINAGE DITCH (MAN)	
FEDERAL AID HIGHWAY SYSTEM		IRIGATION DITCH	
FEDERAL AID SECONDARY HIGHWAY SYSTEM		RESERVOIR, POND OR LAKE	
END OF FEDERAL AID DESIGNATED ROUTE		RESERVOIR, WITH DAM	
		DAM	
		WASH OR SWAMP LAND	
FRONTIER ROAD		SOIL, PEK. OR LANDING	
UNIMPROVED ROAD		HIGHWAY BRIDGE (OVER 20 FT. IN LENGTH)	
GRADED AND DRAINED ROAD		HIGHWAY BRIDGE CLOSELY SPACED	
GRAVEL OR STONE SURFACED ROAD		STEEL TRUSS BRIDGE LAKE	
HARD SURFACED ROAD		CANTILEVER BRIDGE	
DIVIDED HIGHWAY (FRONTAGE ROAD)		FORD - ROAD ESTABLISHED	
INTERCHANGES		FORD - ROAD ESTABLISHED	
HIGHWAY GRADE SEPARATION		CAUSEWAY	
POINTS BETWEEN WHICH DISTANCES ARE MEASURED INDICATED THUS		CATTLE GUARD	
RAILROADS		PROMONT ELEVATION	
RAILROADS IN JUSTIFICATION		STATE LINE	
TWO OR MORE TRACKS OF SEPARATELY OPERATED		COUNTY LINE	
RAILROAD CROSSINGS		SECTION LINE	
GRADE CROSSINGS		FEDERAL AND STATE RESERVATION BOUNDARY LINE	
RAILROAD ABOVE		COUNTY SEAT	
RAILROAD BELOW		OTHER CITIES AND VILLAGES	
		UNINCORPORATED VILLAGES OR AREA OF CONGESTED TRAFFIC	
		MILITARY FIELD	
		INCORPORATED CITY OR VILLAGE	
		POPULATION	
		FIGURES INDICATED IN POPULATION	



GENERAL HIGHWAY MAP
NORTH HALF
LYMAN COUNTY
SOUTH DAKOTA
prepared by the
SOUTH DAKOTA DEPARTMENT OF TRANSPORTATION
in cooperation with the
FEDERAL DEPARTMENT OF TRANSPORTATION
FEDERAL HIGHWAY ADMINISTRATION

SCALE
0 1 2 3 4 5 MILES

2012

UNIVERSAL TRANSVERSE MERCATOR PROJECTION

RESTRICTION OF LIABILITY: The South Dakota Department of Transportation and the Federal Highway Administration make no warranty, promise or guarantee about the accuracy, completeness or timeliness of the data and information contained herein for any use and omission of the data contained herein, and users of any data, information or services derived from this map assume all responsibility for their own use. The Department of Transportation and the Federal Highway Administration are not liable for any damages, including consequential damages, arising from the use of this data, information or services. This map is provided as a service to the public and is not intended for use as a substitute for a professional survey or other professional services. It is given with respect to this notice.

COPIES OF THIS MAP ARE AVAILABLE FOR PUBLIC USE AT A NOMINAL COST. S.D. Department of Transportation, Map Sales - PO BOX 773, 5700 Pierre, South Dakota 57501