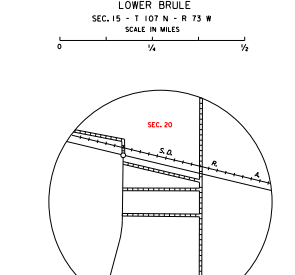
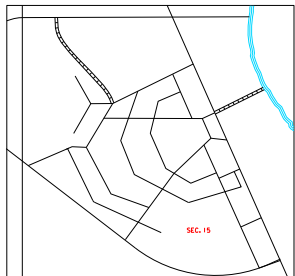
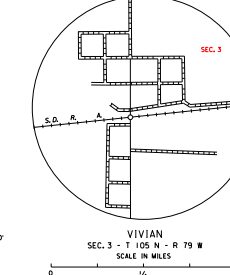
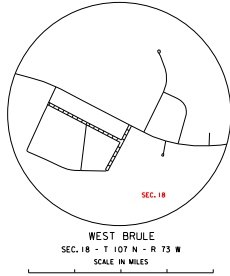


ORIGINAL LOWER BRULE INDIAN RESERVATION  
 HATCHED AREA SHOWS PRESENT RESERVATION (UNOFFICIAL)



**LEGEND**

INTERSTATE HIGHWAY (FULL CONTROL OF ACCESS)	ROAD WITH INTERMITTENT NAVIGATION	WASH. OR SWAMP LAND	SOIL, PEK. OR LANDING
U.S. NUMBERED HIGHWAY	GRAVEL OR STONE SURFACED ROAD	ROADWAY (SMALL)	INCORPORATED CITY OR VILLAGE
STATE NUMBERED HIGHWAY	GRAVEL OR STONE SURFACED ROAD	RAILROAD (SMALL)	POPULATION
FEDERAL AID HIGHWAY SYSTEM	GRAVEL OR STONE SURFACED ROAD	RAILROAD (LARGE)	UNINCORPORATED VILLAGE OR AREA OF CONGESTED TRAFFIC
FEDERAL AID SECONDARY HIGHWAY SYSTEM	GRAVEL OR STONE SURFACED ROAD	RAILROAD (SMALL)	
END OF FEDERAL AID DESIGNATED ROUTE	GRAVEL OR STONE SURFACED ROAD	RAILROAD (LARGE)	
PRIMITIVE ROAD	GRAVEL OR STONE SURFACED ROAD	RAILROAD (SMALL)	
UNIMPROVED ROAD	GRAVEL OR STONE SURFACED ROAD	RAILROAD (LARGE)	
GRAVEL OR STONE SURFACED ROAD	GRAVEL OR STONE SURFACED ROAD	RAILROAD (SMALL)	
ROAD SURFACED ROAD	GRAVEL OR STONE SURFACED ROAD	RAILROAD (LARGE)	
DIVIDED HIGHWAY (FRONTAGE ROAD)	GRAVEL OR STONE SURFACED ROAD	RAILROAD (SMALL)	
INTERCHANGES	GRAVEL OR STONE SURFACED ROAD	RAILROAD (LARGE)	
HIGHWAY GRADE SEPARATION	GRAVEL OR STONE SURFACED ROAD	RAILROAD (SMALL)	
POINTS BETWEEN WHICH DISTANCES ARE MEASURED INDICATED THIS	GRAVEL OR STONE SURFACED ROAD	RAILROAD (LARGE)	
RAILROADS IN JUSTIFICATION	GRAVEL OR STONE SURFACED ROAD	RAILROAD (SMALL)	
TWO OR MORE TRACKS OF SEPARATELY OPERATED	GRAVEL OR STONE SURFACED ROAD	RAILROAD (LARGE)	
RAILROAD CROSSINGS	GRAVEL OR STONE SURFACED ROAD	RAILROAD (SMALL)	
RAILROAD ABOVE	GRAVEL OR STONE SURFACED ROAD	RAILROAD (LARGE)	
RAILROAD BELOW	GRAVEL OR STONE SURFACED ROAD	RAILROAD (SMALL)	
RAILROAD WITH SURFACED RUMBLE	GRAVEL OR STONE SURFACED ROAD	RAILROAD (LARGE)	
MILITARY FIELD	GRAVEL OR STONE SURFACED ROAD	RAILROAD (SMALL)	
AGRICULTURAL FACILITIES	GRAVEL OR STONE SURFACED ROAD	RAILROAD (LARGE)	
LANDING AREA OR STRIP	GRAVEL OR STONE SURFACED ROAD	RAILROAD (SMALL)	
INCLUDING PRIVATE AIR FIELDS	GRAVEL OR STONE SURFACED ROAD	RAILROAD (LARGE)	
ARBITRARY LIGHT BEACON	GRAVEL OR STONE SURFACED ROAD	RAILROAD (SMALL)	
	GRAVEL OR STONE SURFACED ROAD	RAILROAD (LARGE)	

**GENERAL HIGHWAY MAP**  
**NORTH HALF**  
**LYMAN COUNTY**  
**SOUTH DAKOTA**  
 prepared by the  
 SOUTH DAKOTA DEPARTMENT OF TRANSPORTATION  
 in cooperation with the  
 U.S. DEPARTMENT OF TRANSPORTATION  
 FEDERAL HIGHWAY ADMINISTRATION

SCALE  
 0 1 2 3 4 5 MILES  
**2017**

UNIVERSAL TRANSVERSE MERCATOR PROJECTION

RESTRICTION OF LIABILITY: The South Dakota Department of Transportation makes no warranty, promise or guarantee about the accuracy, completeness or timeliness of the data and information contained herein for any use and/or purpose of the data other than the use for which it was intended, and the user assumes all responsibility for any errors, omissions, or inaccuracies in the data and information. The user agrees to hold the South Dakota Department of Transportation harmless for any and all claims, damages, losses, or expenses, including reasonable attorneys' fees, that may be incurred by the user in connection with the use of the data and information. This disclaimer is given with respect to this data.

COPIES OF THIS MAP ARE AVAILABLE FOR PUBLIC USE AT A NOMINAL COST  
 S.D. Department of Transportation  
 Map Sales - PO BOX 773 5700  
 Pierre, South Dakota 57502