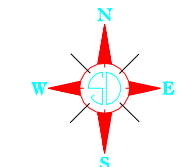
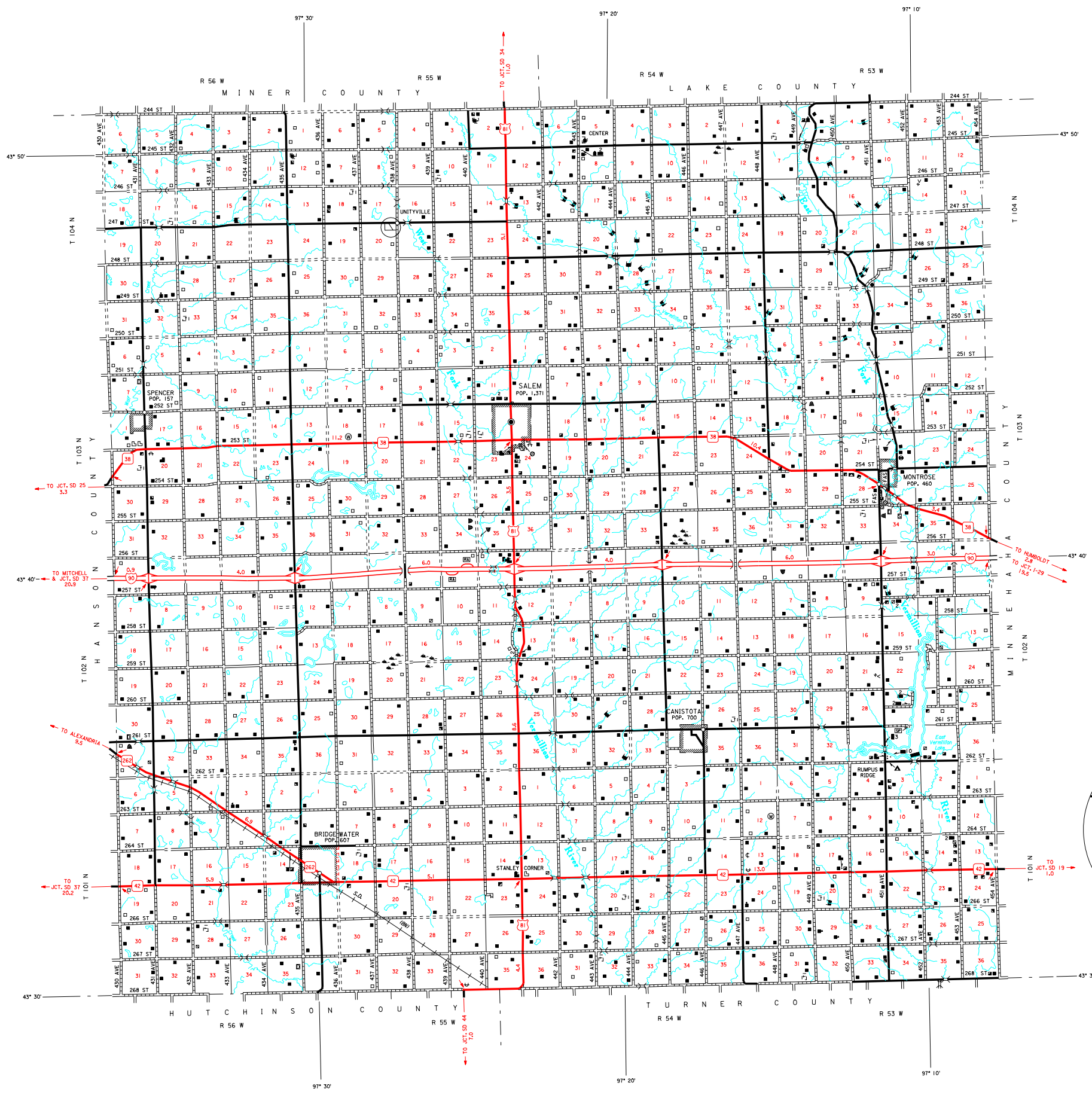


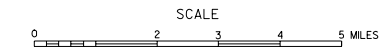
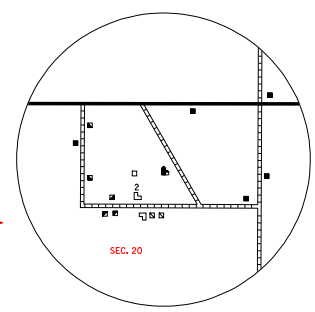
LEGEND

INTERSTATE HIGHWAY (FULL CONTROL OF ACCESS)		UNINCORPORATED VILLAGE OR AREA OF CONGESTED CULTURE (FIGURES INDICATED 1990 POPULATION)	
U.S. NUMBERED HIGHWAY		INCORPORATED CITY OR VILLAGE (FIGURES INDICATED 1990 POPULATION)	
STATE NUMBERED HIGHWAY		FOREST RANGER STATION	
PRIMITIVE ROAD		BATHING BEACH OR SWIMMING POOL	
UNIMPROVED ROAD		PLAYGROUND, BALL FIELD, ETC.	
GRAVEL AND DRAINED ROAD		CAMP SITE, NO PERMANENCE	
GRAVEL OR STONE SURFACED ROAD		POUCH GROUNDS	
HARD SURFACED ROAD		SCENIC SITE	
DIVIDED HIGHWAY (WITH FRONTAGE ROAD)		TOURIST COURT OR HOTEL	
INTERCHANGE		CAMP OR LODGE	
HIGHWAY GRADE SEPARATION		FISH HATCHERY	
POINTS BETWEEN WHICH DISTANCES ARE MEASURED INDICATED THIS		REST AREA	
RAILROAD		GOLF COURSE OR COUNTRY CLUB	
RAILROADS IN JUNCTAPOSITION		AMUSEMENT HALL OR PARK	
TWO OR MORE TRACKS OF SEPARATELY OPERATED COMPANIES ON ADJACENT RIGHT-OF-WAY		SMALL PARK (SP - STATE, WP - WAYSIDE PARK, MP - MUNICIPAL PARK)	
RAILROAD CROSSINGS		FARROWGROUND, RACE COURSE, SPEEDWAY	
GRADE CROSSINGS		DRIVE-IN THEATRE	
RAILROAD ABOVE		FARM UNIT	
RAILROAD BELOW		NOT IN USE	
PORT WITH SURFACED RUNWAYS		DWELLING (OTHER THAN FARM)	
MILITARY FIELD		ROW OR GROUPS OF DWELLINGS CLOSELY SPACED	
PORT, COMPLETE FACILITIES (COMMERCIAL OR MUNICIPAL)		COMBINED DWELLING AND STORE OR SMALL BUSINESS	
AIRFIELD, LIMITED FACILITIES		DWELLING, BUSINESS, AND FILLING STATION	
LANDING AREA OR STRIP (INCLUDING PRIVATE AIR FIELDS)		DWELLING, BUSINESS, FILLING STATION, AND POST OFFICE	
ARWAY LIGHT BEACON (GENERAL)		SEASONAL OR SUMMER COLONY DWELLING	
NARROW STREAM		SEASONAL DWELLINGS CLOSELY SPACED	
WIDE STREAM (INTERMITTENT NAVIGATION)		CHURCH - OTHER RELIGIOUS INSTITUTION	
DRAINAGE DITCH (MAIN)		CEMETARY	
IRRIGATION DITCH		CHURCH WITH CEMETARY ADJACENT	
RESERVOIR, POND OR LAKE		STORE OR SMALL BUSINESS ESTABLISHMENT	
RESERVOIR, WITH DAM		FACTORY OR INDUSTRIAL PLANT	
DAM		BUSINESS AND FILLING STATION	
MARSH OR SWAMP LAND		BUSINESS AND POST OFFICE	
DOCK, PIER, OR LANDING		FILLING STATION	
HIGHWAY BRIDGE (OVER 20 FT. IN LENGTH)		MINE	
HIGHWAY BRIDGES CLOSELY SPACED		BULK PLANT	
STEEL TRUSS BRIDGE LARGE		GAUGING OR PUMPING STATION (GENERAL)	
CANTILEVER BRIDGE		STOCK YARD - LOADING PEN OR CORRAL	
FORD - ROAD ESTABLISHED		GRAVEL PIT	
CONCRETE FORD		GRAIN ELEVATOR	
CAUSEWAY		WAREHOUSE (GENERAL) GOV'T., ADD. US. OR STATE	
PROMINENT ELEVATION		NURSERY	
STATE LINE		SCHOOLHOUSE	
COUNTY LINE		FORD - ROAD ESTABLISHED	
CONGRESSIONAL TOWNSHIP LINE		OTHER EDUCATIONAL INSTITUTION	
SECTION LINE		TORNHILL, GRANGE, OR COMMUNITY HALL	
FEDERAL AND STATE RESERVATION BOUNDARY LINE		ADMINISTRATION BUILDING	
MONUMENT (SMALL)		POST OFFICE	
COUNTY SEAT		HIGHWAY GARAGE (COUNTY, STATE OR FEDERAL)	
OTHER CITIES AND VILLAGES		WATER SUPPLY STAND PIPE OR TANK	
		COMMUNICATION TOWER - TELEPHONE, REA ETC.	
		POWER SUBSTATION	
		RADIO OR TV STATION (WITH CALL LETTERS)	
		RADIO RANGE STATION	
		GARBAGE OR RUBBISH DUMP	
		SEWAGE DISPOSAL PLANT	
		TRIANGULATION STATION	
		LOCATION OF CULTURE WHERE MAP SCALE DOES NOT PERMIT PLACING OF SYMBOL	

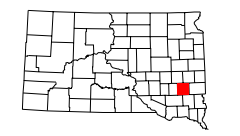


GENERAL HIGHWAY MAP  
**McCOOK COUNTY**  
 SOUTH DAKOTA

prepared by the  
 SOUTH DAKOTA DEPARTMENT OF TRANSPORTATION  
 in cooperation with the  
 U.S. DEPARTMENT OF TRANSPORTATION  
 FEDERAL HIGHWAY ADMINISTRATION



2006



UNIVERSAL TRANSVERSE MERCATOR PROJECTION