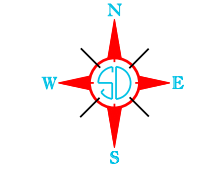


**LEGEND**

INTERSTATE HIGHWAY (FULL CONTROL OF ACCESS)		NARROW STREAM	
U.S. NUMBERED HIGHWAY		WIDE STREAM (INTERMITTENT NAVIGATION)	
STATE NUMBERED HIGHWAY		DRAINAGE DITCH (MAIN)	
FEDERAL AID HIGHWAY SYSTEM		IRRIGATION DITCH	
FEDERAL AID SECONDARY HIGHWAY SYSTEM		FAS RESERVOIR, POND OR LAKE	
END OF FEDERAL AID DESIGNATED ROUTE		RESERVOIR, WITH DAM	
PRIMITIVE ROAD		DAM	
UNIMPROVED ROAD		MARSH OR SWAMP LAND	
GRAVEL OR STONE SURFACED ROAD		DOCK, PIER, OR LANDING	
HARD SURFACED ROAD		HIGHWAY BRIDGE (OVER 20 FT. IN LENGTH)	
DIVIDED HIGHWAY (WITH FRONTAGE ROAD)		HIGHWAY BRIDGES CLOSELY SPACED	
INTERCHANGE		STEEL TRUSS BRIDGE LARGE	
HIGHWAY GRADE SEPARATION		CANTILEVER BRIDGE	
POINTS BETWEEN WHICH DISTANCES ARE MEASURED INDICATED THUS		FORD - ROAD ESTABLISHED	
RAILROAD		CONCRETE FORD	
RAILROADS IN JUXTAPosition		CAUSEWAY	
TWO OR MORE TRACKS OF SEPARATELY OPERATED COMPANIES ON ADJACENT RIGHT-OF-WAY		CATTLE GUARD	
RAILROAD CROSSINGS		PROMINENT ELEVATION	
GRADE CROSSINGS		STATE LINE	
RAILROAD ABOVE		COUNTY LINE	
RAILROAD BELOW		CONGRESSIONAL TOWNSHIP LINE	
AIRPORT WITH SURFACED RUNWAYS		SECTION LINE	
MILITARY FIELD		FEDERAL AND STATE RESERVATION BOUNDARY LINE	
AIRPORT, COMPLETE FACILITIES (COMMERCIAL OR MUNICIPAL)		MONUMENT (SMALL)	
ARFIELD, LIMITED FACILITIES		COUNTY SEAT	
LANDING AREA OR STRIP (INCLUDING PRIVATE AIR FIELDS)		OTHER CITIES AND VILLAGES	
ARRAY LIGHT BEACON (GENERAL)		UNINCORPORATED VILLAGE OR AREA OF CONGESTED CULTURE	
		INCORPORATED CITY OR VILLAGE (FIGURES INDICATED 1990 POPULATION)	



GENERAL HIGHWAY MAP  
 NORTH HALF  
**ROBERTS COUNTY**  
 SOUTH DAKOTA

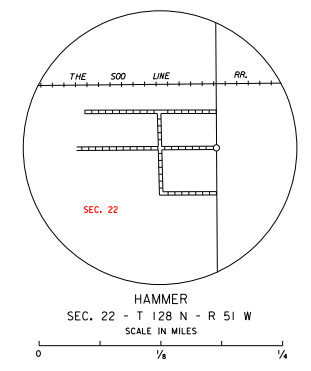
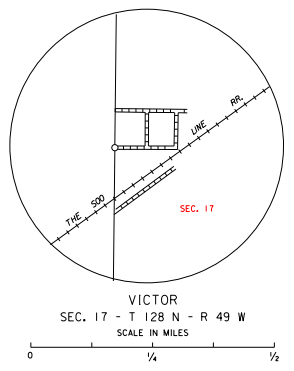
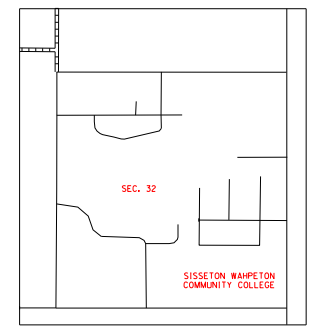
prepared by the  
 SOUTH DAKOTA DEPARTMENT OF TRANSPORTATION  
 in cooperation with the  
 U.S. DEPARTMENT OF TRANSPORTATION  
 FEDERAL HIGHWAY ADMINISTRATION



2017



UNIVERSAL TRANSVERSE MERCATOR PROJECTION



RESTRICTION OF LIABILITY: The South Dakota Department of Transportation makes no claims, promises or warranties about the accuracy, completeness or adequacy of the data and expressly disclaims liability for errors and omissions of the data content. No warranty of any kind, implied, expressed or statutory, including but not limited to the warranties of non-infringement of third party rights, title, merchantability and fitness for a particular purpose is given with respect to this data.