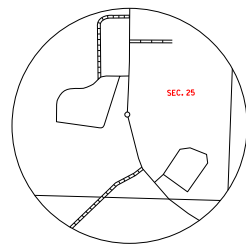
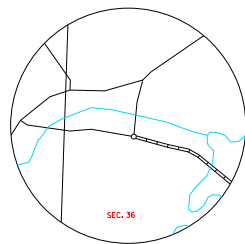


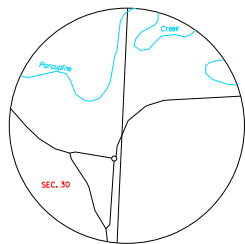
PINE RIDGE INDIAN SCHOOL
SEC. 12 - T 35 N - R 45 W
SCALE IN MILES



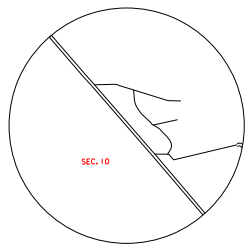
MANDERSON
SEC. 25 - T 38 N - R 44 W
SCALE IN MILES



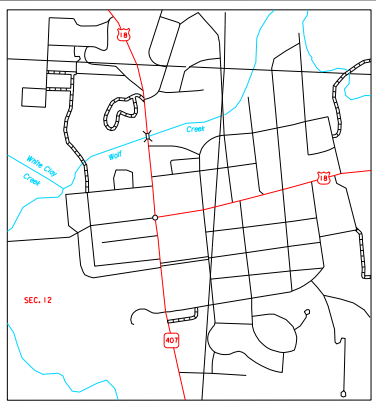
WOUNDED KNEE
SEC. 36 - T 37 N - R 43 W
SCALE IN MILES



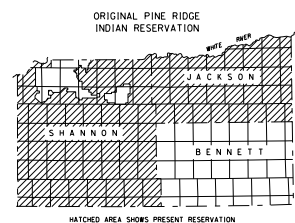
PORCUPINE
SEC. 30 - T 38 N - R 42 W
SCALE IN MILES



INSET A
SEC. 10 - T 37 N - R 46 W
SCALE IN MILES



PINE RIDGE
SEC. 12 - T 35 N - R 45 W
SCALE IN MILES

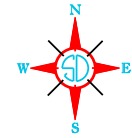


ORIGINAL PINE RIDGE INDIAN RESERVATION

HATCHED AREA SHOWS PRESENT RESERVATION (UNOFFICIAL)

LEGEND

- INTERSTATE HIGHWAY (FULL CONTROL OF ACCESS)
- U.S. NUMBERED HIGHWAY
- STATE NUMBERED HIGHWAY
- FEDERAL AID HIGHWAY SYSTEM
- FEDERAL AID SECONDARY HIGHWAY SYSTEM
- END OF FEDERAL AID DESIGNATED ROUTE
- UNIMPROVED ROAD
- GRAVEL OR STONE SURFACED ROAD
- HARD SURFACED ROAD
- DIVIDED HIGHWAY (FRONTAGE ROAD)
- INTERCHANGE
- HIGHWAY SPREAD SEPARATION
- POINTS BETWEEN WHICH DISTANCES ARE MEASURED THIS ROUTE
- RAILROAD
- RAILROAD IN ADJUSTMENT
- TWO OR MORE TRACKS OF SEPARATELY OPERATED COMPANIES ON ADJACENT RIGHT-OF-WAY
- RAILROAD CROSSINGS
- RAILROAD ABANDONED
- RAILROAD BELOW
- AIRPORT WITH SURFACED RUNWAYS
- MILITARY FIELD
- AIRPORT, COMPLETE FACILITIES (COMMERCIAL OR MUNICIPAL)
- AIRFIELD, LIMITED FACILITIES
- LANDING AREA OR STRIP (INCLUDING PRIVATE AIR FIELDS)
- AIRWAY LIGHT BEACON (GENERAL)
- NARROW STREAM
- WIDE STREAM (INTERNATIONAL NAVIGATION)
- DRAINAGE DITCH (MAIN)
- IRRIGATION DITCH
- RESERVOIR, FOND OR LAKE
- RESERVOIR, WITH DAM
- DAM
- WASH OR SWAMP LAND
- DOCK, PIER, OR LANDING
- HIGHWAY BRIDGE (OVER 20 FT. IN LENGTH)
- HIGHWAY BRIDGES CLOSELY SPACED
- STEEL TRUSS BRIDGE LARGE
- CANTILEVER BRIDGE
- FOOD - ROAD ESTABLISHED
- CONCRETE FOOD
- CAUSEWAY
- CATTLE GUARD
- PROMINENT ELEVATION
- STATE LINE
- COUNTY LINE
- CONGRESSIONAL TOWNSHIP LINE
- SECTION LINE
- FEDERAL AND STATE RESERVATION BOUNDARY LINE
- COUNTY SEAT
- CORNER STAKES AND VILLAGES
- UNINCORPORATED VILLAGE OR AREA OF CONGESTED CULTURE
- INCORPORATED CITY OR VILLAGE (FIGURES INDICATE 1990 POPULATION)



GENERAL HIGHWAY MAP

SOUTH HALF

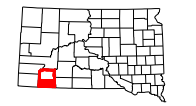
SHANNON COUNTY SOUTH DAKOTA

prepared by the SOUTH DAKOTA DEPARTMENT OF TRANSPORTATION in cooperation with the U.S. DEPARTMENT OF TRANSPORTATION FEDERAL HIGHWAY ADMINISTRATION

SCALE

0 1 2 3 4 5 MILES

2012



UNIVERSAL TRANSVERSE MERCATOR PROJECTION

RESTRICTION OF LIABILITY: The South Dakota Department of Transportation makes no claims, promises or guarantees about the accuracy, completeness, or timeliness of the data and information contained hereon. It is the user's responsibility to verify the accuracy, completeness, and timeliness of the data and information presented for individual purposes. The user's use of the data and information is at their own risk. The user's use of the data and information is at their own risk. The user's use of the data and information is at their own risk.

COPIES OF THIS MAP ARE AVAILABLE FOR PUBLIC USE AT A NOMINAL COST S.D. Department of Transportation Map Scale - 1:62,500 773 3249 Please Save Paper

