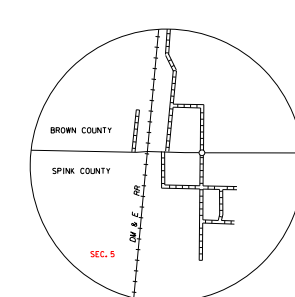
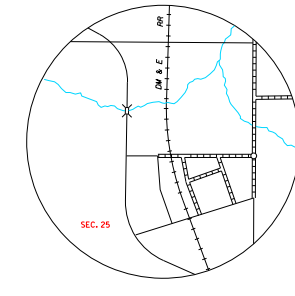


LEGEND

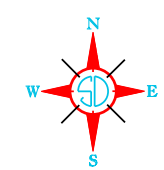
INTERSTATE HIGHWAY (FULL CONTROL OF ACCESS)		NARROW STREAM	
U.S. NUMBERED HIGHWAY		WIDE STREAM (INTERMITTENT NAVIGATION)	
STATE NUMBERED HIGHWAY		DRAINAGE DITCH (MARK)	
FEDERAL AID HIGHWAY SYSTEM		IRRIGATION DITCH	
FEDERAL AID SECONDARY HIGHWAY SYSTEM		FAS	
END OF FEDERAL AID DESIGNATED ROUTE		RESERVOIR, POND OR LAKE	
		RESERVOIR, WITH DAM	
		DAM	
		MARSH OR SWAMP LAND	
PRIMITIVE ROAD		DOCK, PIER, OR LANDING	
UNIMPROVED ROAD		HIGHWAY BRIDGE (OVER 20 FT. IN LENGTH)	
GRAVEL OR STONE SURFACED ROAD		HIGHWAY BRIDGES CLOSELY SPACED	
HARD SURFACED ROAD		STEEL TRUSS BRIDGE LARGE	
DIVIDED HIGHWAY (WITH FRONTAGE ROAD)		CANTILEVER BRIDGE	
INTERCHANGE		FORD - ROAD ESTABLISHED	
HIGHWAY GRADE SEPARATION		CONCRETE FORD	
POINTS BETWEEN WHICH DISTANCES ARE MEASURED INDICATED THIS		CAUSEWAY	
RAILROAD		CATTLE GUARD	
RAILROADS IN ADJACENT POSITION		PROMINENT ELEVATION	
TWO OR MORE TRACKS OF SEPARATELY OPERATED COMPANIES ON ADJACENT RIGHT-OF-WAY		STATE LINE	
RAILROAD CROSSINGS		COUNTY LINE	
GRADE CROSSINGS		CONGRESSIONAL TOWNSHIP LINE	
RAILROAD ABOVE		SECTION LINE	
RAILROAD BELOW		FEDERAL AND STATE RESERVATION BOUNDARY LINE	
		MONUMENT (SMALL)	
		COUNTY SEAT	
		OTHER CITIES AND VILLAGES	
		UNINCORPORATED VILLAGE OR AREA OF CONGESTED CULTURE	
		INCORPORATED CITY OR VILLAGE (FIGURES INDICATED 1990 POPULATION)	
		MILITARY FIELD	
		AIRPORT, COMPLETE FACILITIES (COMMERCIAL OR MUNICIPAL)	
		AIRFIELD, LIMITED FACILITIES	
		LANDING AREA OR STRIP INCLUDING PRIVATE AIR FIELDS	
		ARMY LIGHT BEACON (GENERAL)	



MANSFIELD SEC. 5 - T 120 N - R 65 W SCALE IN MILES



ATHOL SEC. 25 - T 118 N - R 65 W SCALE IN MILES

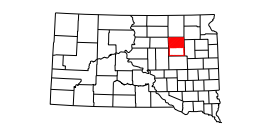


GENERAL HIGHWAY MAP NORTH HALF SPINK COUNTY SOUTH DAKOTA

prepared by the SOUTH DAKOTA DEPARTMENT OF TRANSPORTATION in cooperation with the U.S. DEPARTMENT OF TRANSPORTATION FEDERAL HIGHWAY ADMINISTRATION

SCALE 0 1 2 3 4 5 MILES

2017



UNIVERSAL TRANSVERSE MERCATOR PROJECTION

RESTRICTION OF LIABILITY: The South Dakota Department of Transportation makes no claim, promise or guarantee about the accuracy, completeness or consistency of the data and expressly disclaims liability for errors and omissions of the data content. No warranty of any kind, implied, expressed or statutory, including but not limited to warranties of non-infringement of third party rights, title, merchantability and fitness for a particular purpose is given with respect to this data.

COPIES OF THIS MAP ARE AVAILABLE FOR PUBLIC USE AT A NOMINAL COST S.D. Department of Transportation Map Series - FH 6651/712 1249 Pierre, South Dakota 57501