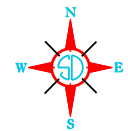


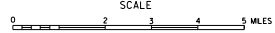
LEGEND

INTERSTATE HIGHWAY (FULL CONTROL OF ACCESS)		NARROW STREAM	
STATE NUMBERED HIGHWAY		WIDE STREAM (INTERMITTENT NAVIGATION)	
FEDERAL AID HIGHWAY SYSTEM		DRAINAGE DITCH (UNMAN)	
FEDERAL AID SECONDARY HIGHWAY SYSTEM		IRRIGATION DITCH	
END OF FEDERAL AID DESIGNATED ROUTE		FAS	
PRIMITIVE ROAD		RESERVOIR, POND OR DAM	
UNIMPROVED ROAD		RESERVOIR, BITH DAM	
GRAVEL AND SHIMMED ROAD		DAM	
GRAVEL OR STONE SURFACED ROAD		BANK OF STREAM LAKE	
HARD SURFACED ROAD		DOCK, PIER, OR LANDING	
DIVIDED HIGHWAY WITH DRAINAGE ROAD		HIGHWAY BRIDGE OVER 20 FT. IN LENGTH	
INTERCHANGE		HIGHWAY BRIDGES CLOSELY SPACED	
HIGHWAY GRADE SEPARATION		STEEL TRUSS BRIDGE LARGE	
POINTS BETWEEN WHICH DISTANCES ARE MEASURED INDICATED THIS		CANTILEVER BRIDGE	
RAILROAD		FORD - ROAD ESTABLISHED	
RAILROADS IN JUNCTATION		CONCRETE FORD	
TWO OR MORE TRACKS OF SEPARATELY OPERATED COMPANIES ON ADJACENT RIGHT-OF-WAY		CAUSEWAY	
RAILROAD CROSSINGS		PROMINENT ELEVATION	
RAILROAD ABOVE		STATE LINE	
RAILROAD BELOW		COUNTY LINE	
MILITARY FIELD (GENERAL)		CONGRESSIONAL TOWNSHIP LINE	
APPROPRIATE FACILITIES (COMMERCIAL OR MUNICIPAL)		SECTION LINE	
APRFIELD, LIMITED FACILITIES		FEDERAL AND STATE RESERVOIR BOUNDARY LINE	
LANDING AREA OR STRIP		MONUMENT (DAM)	
INCLUDING PRIVATE AIR FIELDS		COUNTY SEAT	
ARMY LIGHT BEACON (GENERAL)		OTHER CITIES AND VILLAGES	
		UNINCORPORATED VILLAGE OR AREA OF CONGESTED TRAFFIC	
		INCORPORATED CITY OR VILLAGE	
		POP. 250+	
		POP. 100-250	
		POP. 50-100	
		POP. 10-50	
		POP. 5-10	
		POP. 1-5	
		POP. 0-1	



GENERAL HIGHWAY MAP
YANKTON COUNTY
SOUTH DAKOTA

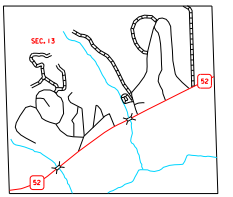
prepared by the
 SOUTH DAKOTA DEPARTMENT OF TRANSPORTATION
 in cooperation with the
 U.S. DEPARTMENT OF TRANSPORTATION
 FEDERAL HIGHWAY ADMINISTRATION



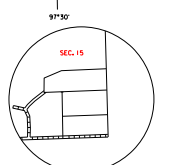
2017



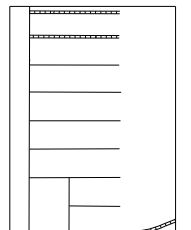
UNIVERSAL TRANSVERSE MERCATOR PROJECTION



INSET C
SEC. 13 - T93N - R55W
SCALE IN MILES



INSET B
SEC. 15 - T93N - R56W
SCALE IN MILES



INSET A
SEC. 15 - T93N - R56W
SCALE IN MILES

RESTRICTION OF LIABILITY: The South Dakota Department of Transportation makes no claims, warranties, or assurances of the data and expressly disclaims liability for any and all damages of any kind resulting from the use of the data contained herein. It is the user's responsibility to determine the accuracy, completeness, and fitness for a particular purpose of the data with respect to this data.

COPIES OF THIS MAP ARE AVAILABLE FOR PUBLIC USE AT A NOMINAL COST
 S.D. Department of Transportation
 Map Sales - PO BOX 1772 5049
 Pierre, South Dakota 57501