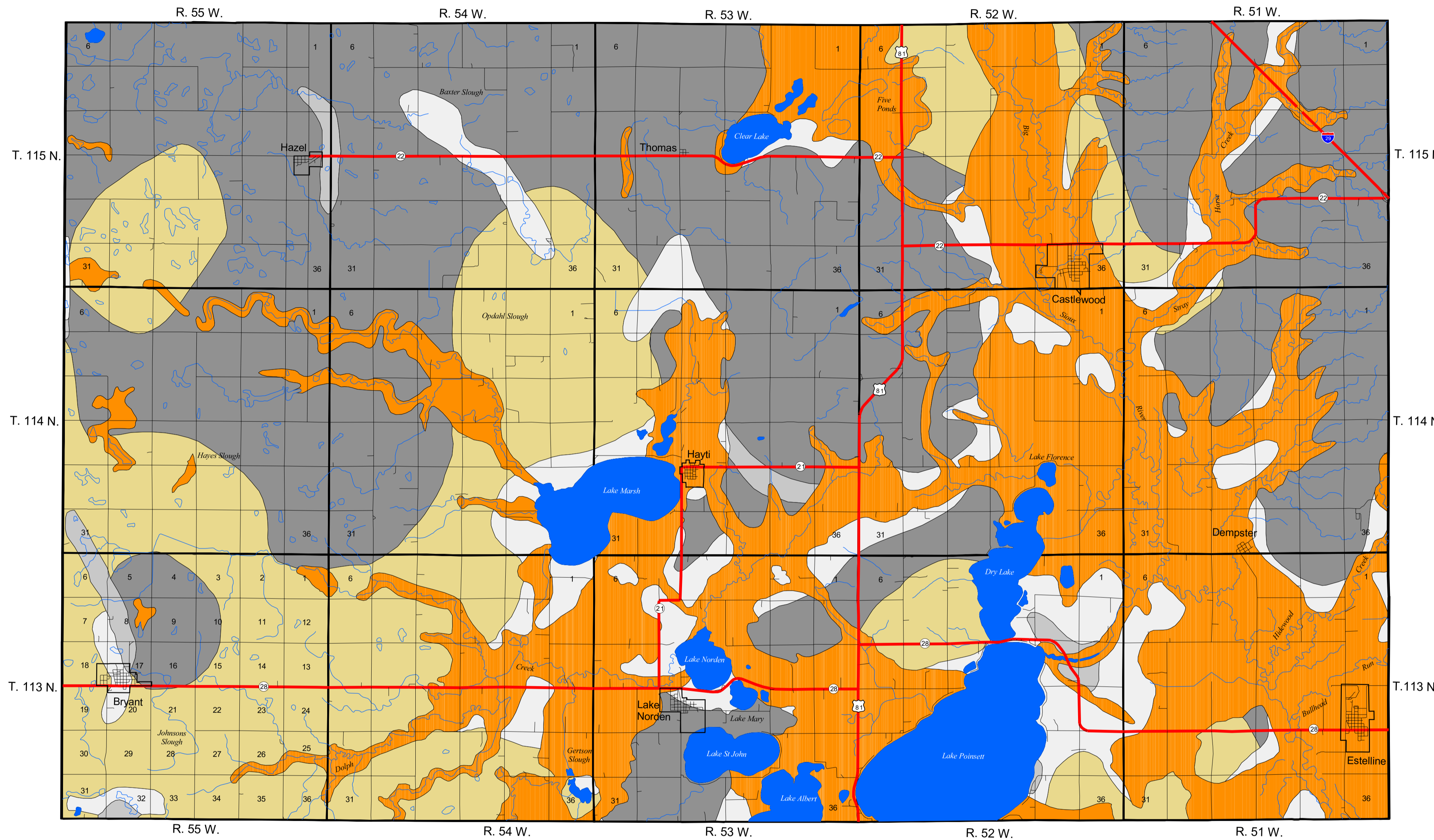


First Occurrence of Aquifer Materials in Hamlin County, South Dakota

Department of Environment and Natural Resources
 Division of Financial and Technical Assistance
 Geological Survey
 Aquifer Materials Map 8
 Ann R. Jensen, 2001

State of South Dakota
 William J. Janklow, Governor

South Dakota Geological Survey
 Derric L. Iles, State Geologist



Explanation

This map is intended for use as a tool to aid in identifying areas underlain by aquifer material. The aquifer materials shown on this map are categorized below. This map does not show individual aquifers. There may be more than one type of aquifer material present in an area. However, only the aquifer material that would be first encountered is shown. Within the boundaries of any given map unit, there may be localized areas where aquifer material is absent. The thickness and permeability of aquifer material may vary significantly. Also, no attempt was made to distinguish between saturated and unsaturated material. Therefore, not all of the areas defined on this map may be an aquifer. Site-specific information should always be examined when making land management or water development decisions.

First occurrence is generally less than or equal to 50 feet below land surface

- Sand and Gravel:** First occurrence is generally at land surface. This area may include some alluvial silt and clay along the rivers and streams.
- Sand and Gravel:** First occurrence is generally below land surface. May not be uniform in depth and thickness and may be discontinuous in lateral extent.

First occurrence is generally greater than 50 feet and less than or equal to 100 feet below land surface

- Sand and Gravel:** May not be uniform in depth and thickness and may be discontinuous in lateral extent

First occurrence is generally greater than 100 feet below land surface

- Sand and Gravel:** May not be uniform in depth and thickness and may be discontinuous in lateral extent
- Dakota Formation:** Consists of interbedded siltstone, sandstone, and shale

— Major highway
 — Road
 — Township boundary
~~~~~ River or stream  
● Lake  
○ Slough or intermittent lake

For township numbering system, see T. 113 N., R. 55 W.

This map was developed from lithologic logs and published reports. The major sources of information were:

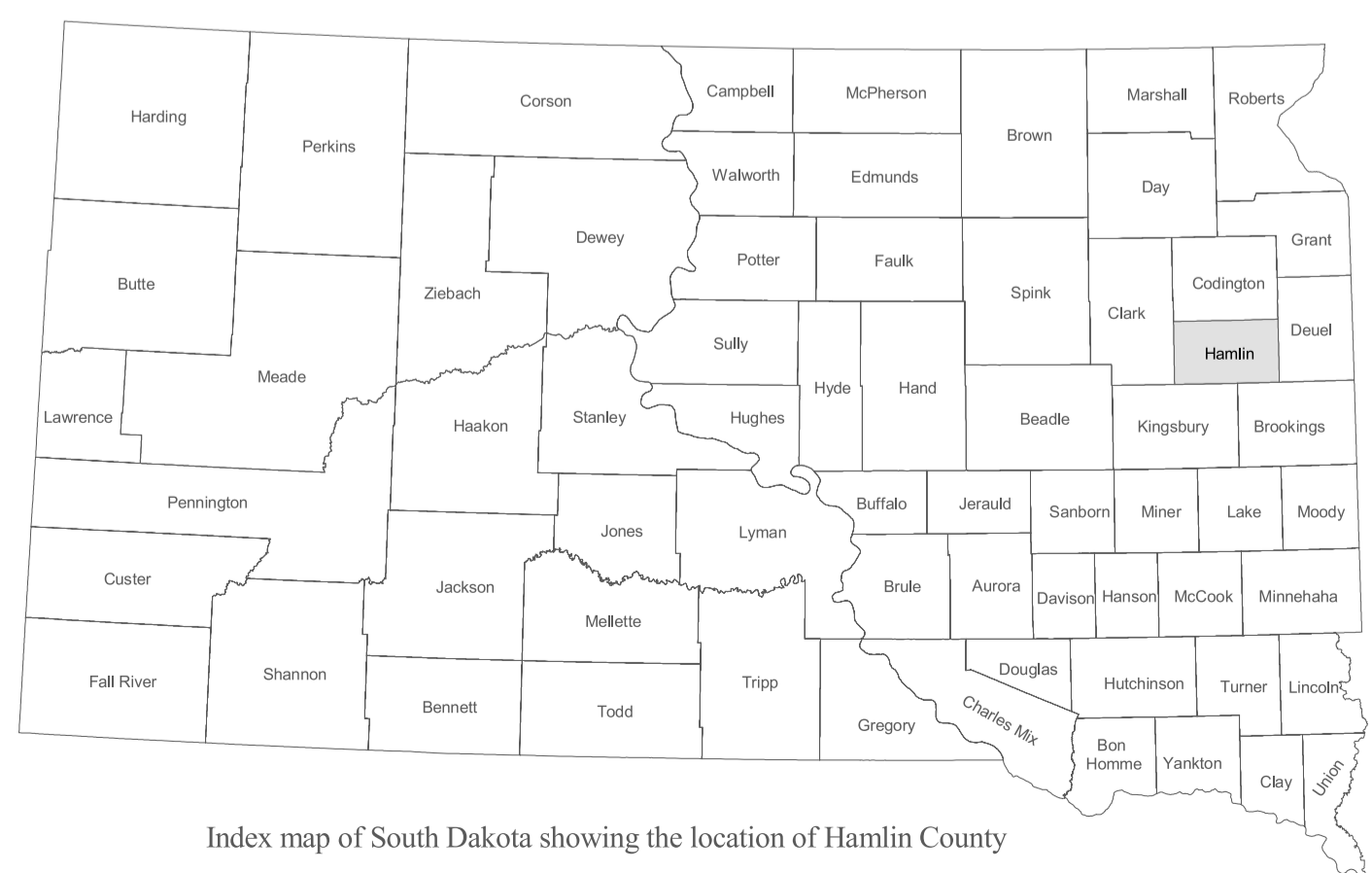
Beissel, D.R., and Gilbertson, J.P., 1987, *Geology and water resources of Deuel and Hamlin Counties, South Dakota; Part I: Geology*; South Dakota Geological Survey Bulletin 27, 41 p.

Kume, J., 1976, *Major aquifers in Deuel and Hamlin Counties, South Dakota*; South Dakota Geological Survey Information Pamphlet 11, 4 p.

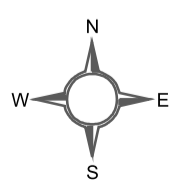
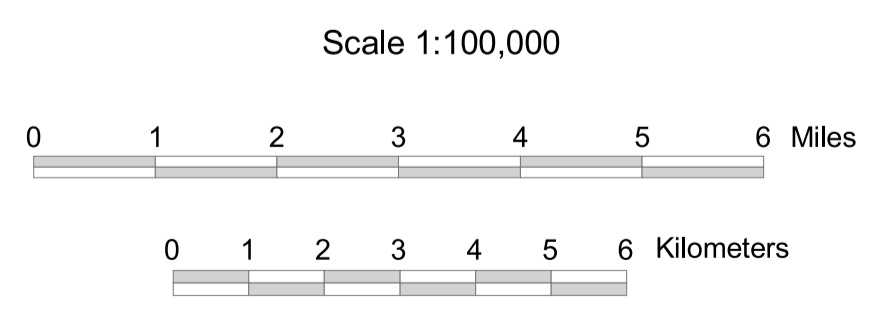
Kume, J., 1985, *Water resources of Deuel and Hamlin Counties, South Dakota*; U.S. Geological Survey Water-Resources Investigation Report 84-4069, 53 p.

South Dakota Geological Survey, Lithologic logs database

The Geological Survey, Department of Environment and Natural Resources, engages in an ongoing data collection and interpretation process. An outcome of that process is to reflect those interpretations on maps such as this one. Reasonable efforts have been made to ensure that this map accurately reflects the source data used in its preparation. This map is date specific. As additional data become available, geologic interpretations may be revised and the map may be updated by the Geological Survey. This map should not be enlarged or otherwise used in an attempt to interpret more detail than can be seen at the 1:100,000 scale.



Index map of South Dakota showing the location of Hamlin County



Publication Date: June 29, 2001