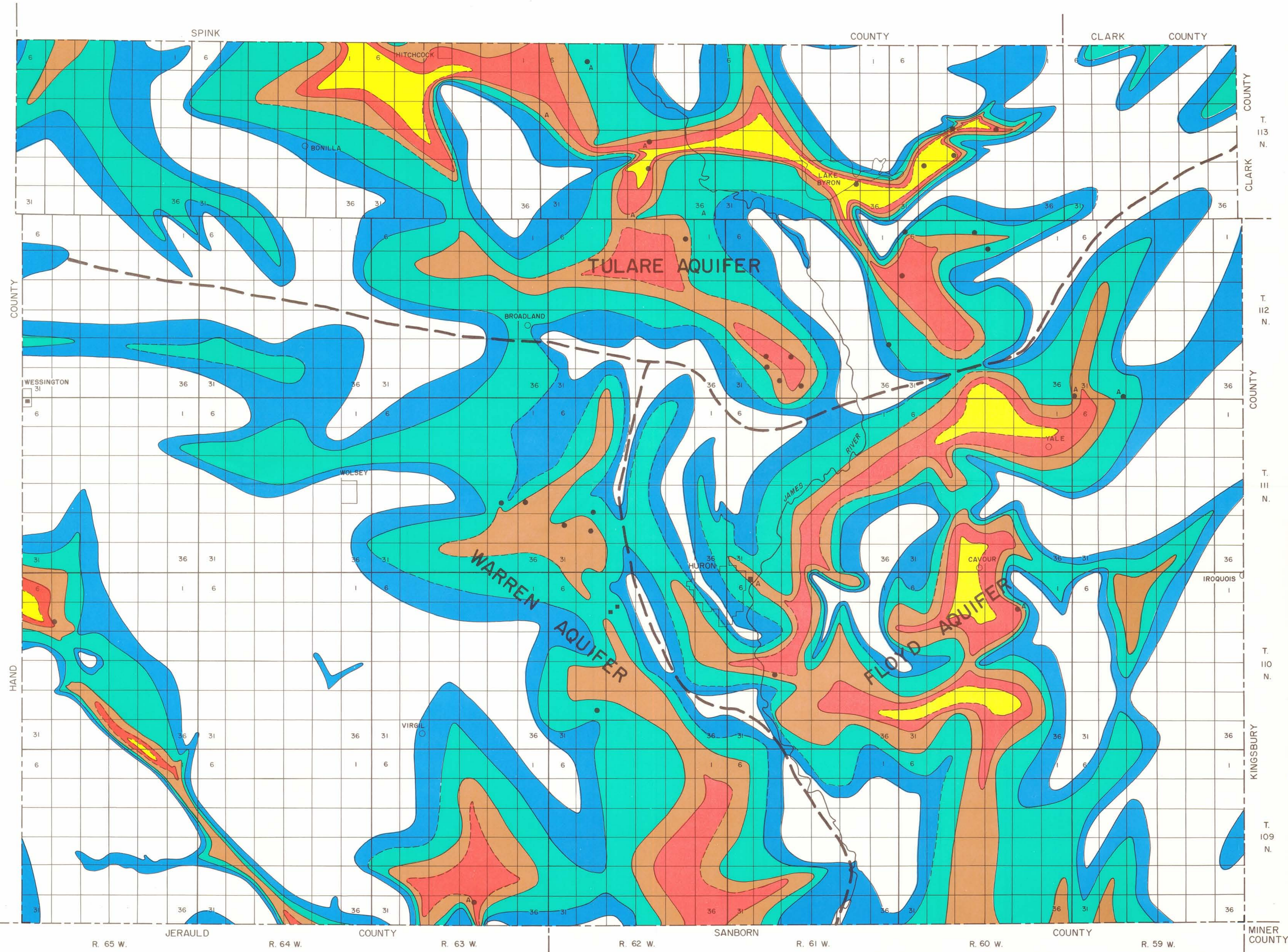












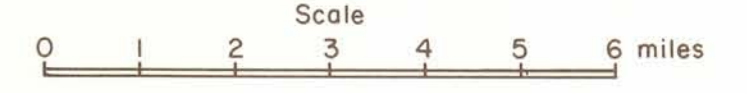
THICKNESS OF  
WATER-SATURATED  
AQUIFER MATERIAL  
IN SURFICIAL DEPOSITS  
IN BEADLE COUNTY,  
SOUTH DAKOTA



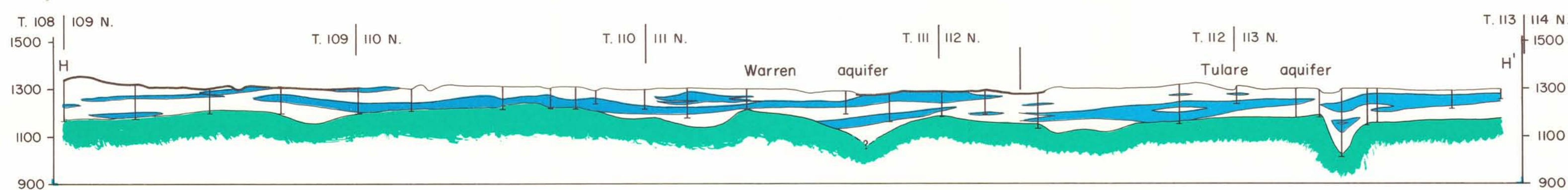
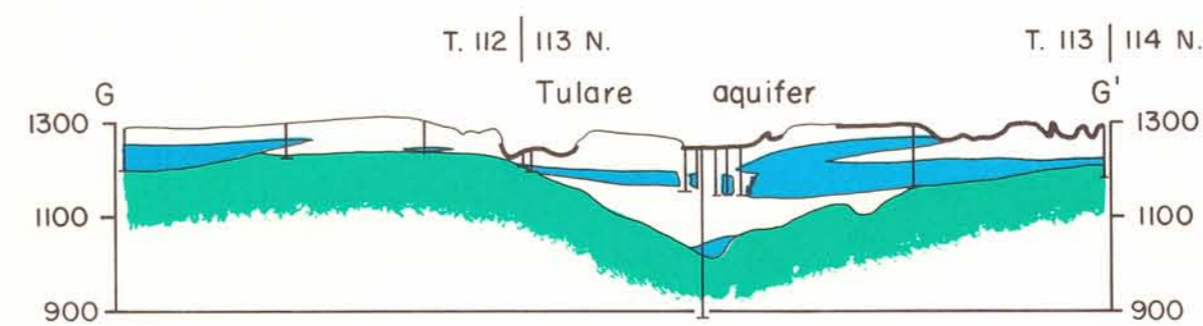
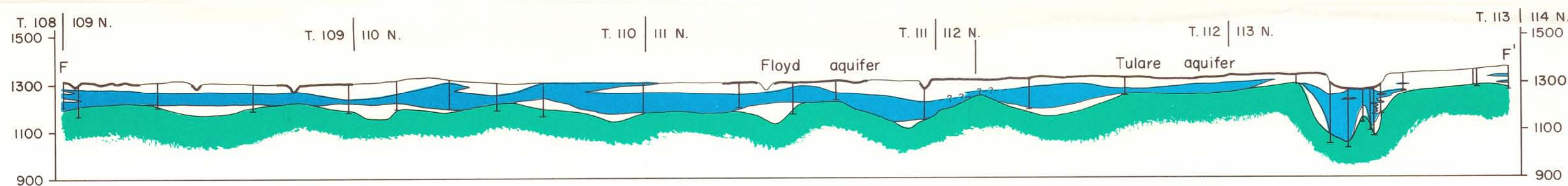
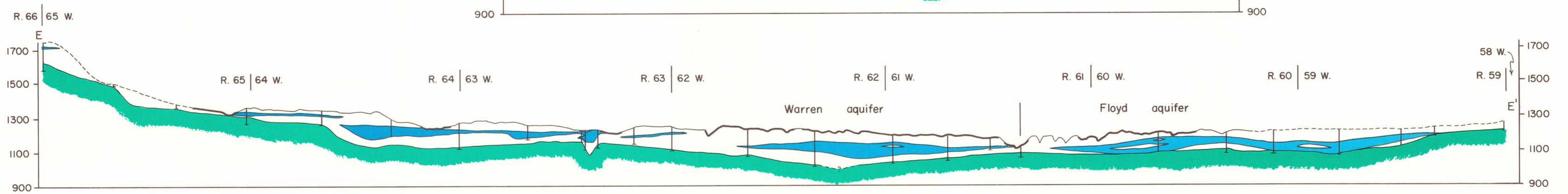
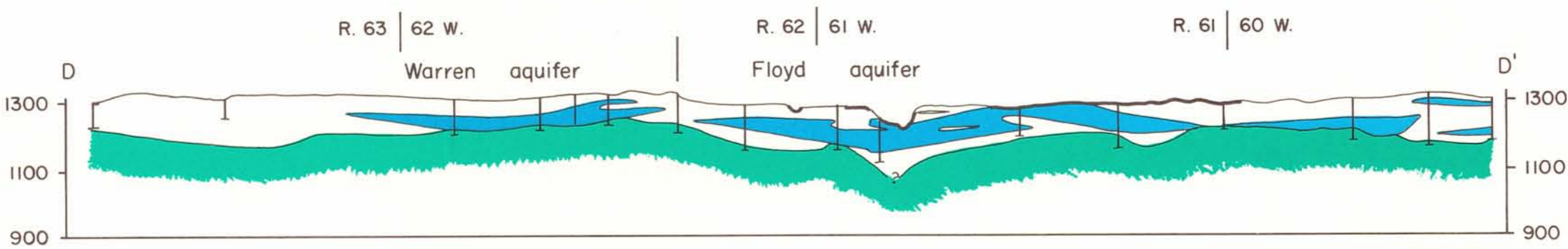
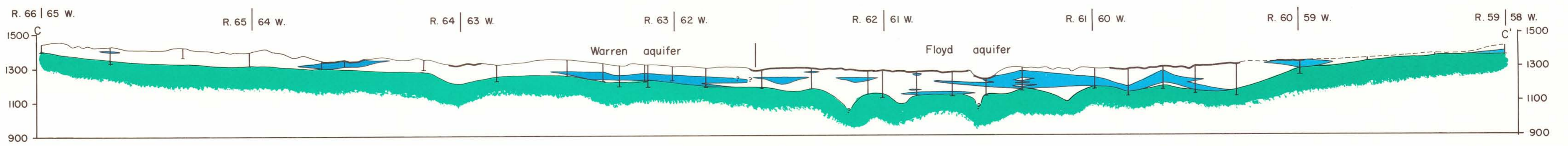
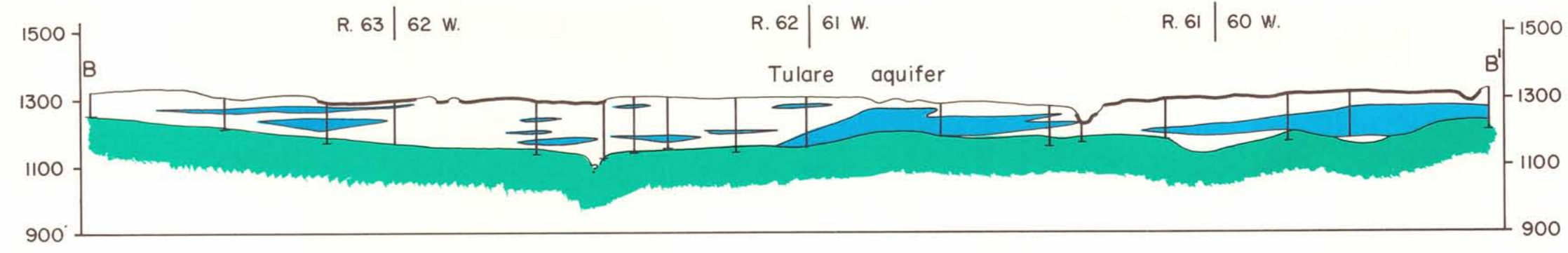
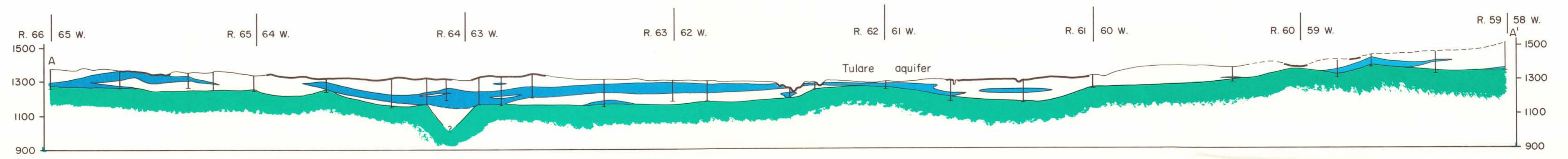
EXPLANATION  
Thickness of water saturated material

-  less than 10 feet
-  10 to 25 feet
-  25 to 50 feet
-  50 to 75 feet
-  75 to 100 feet
-  more than 100 feet

-  Aquifer Boundary
-  Irrigation well
-  Municipal well
-  Aquifer test (see Appendix B)



by  
Lewis W. Howells  
and  
Jerry C. Stephens  
1968



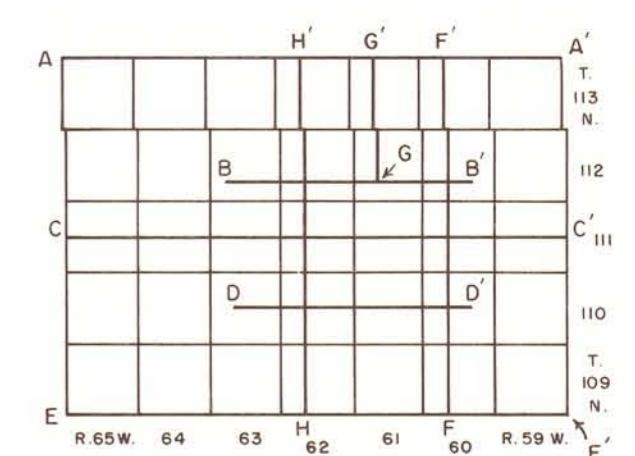
SOUTH DAKOTA GEOLOGICAL SURVEY  
BULLETIN 18  
PLATE 2

EXPLANATION



Permeable surface material (See Fig. 11) (thickness not to scale).

Test hole or well (Log in Howells, Stephens, and Hedges, 1967).



INDEX MAP SHOWING  
LOCATIONS OF CROSS-SECTIONS

PLATE 2 - GENERALIZED CROSS SECTIONS SHOWING AQUIFERS AND AQUICLUDES  
IN SURFICIAL DEPOSITS IN BEADLE COUNTY, SOUTH DAKOTA

