

Figure 2. Map of eastern South Dakota showing physiographic divisions and location of the study area.

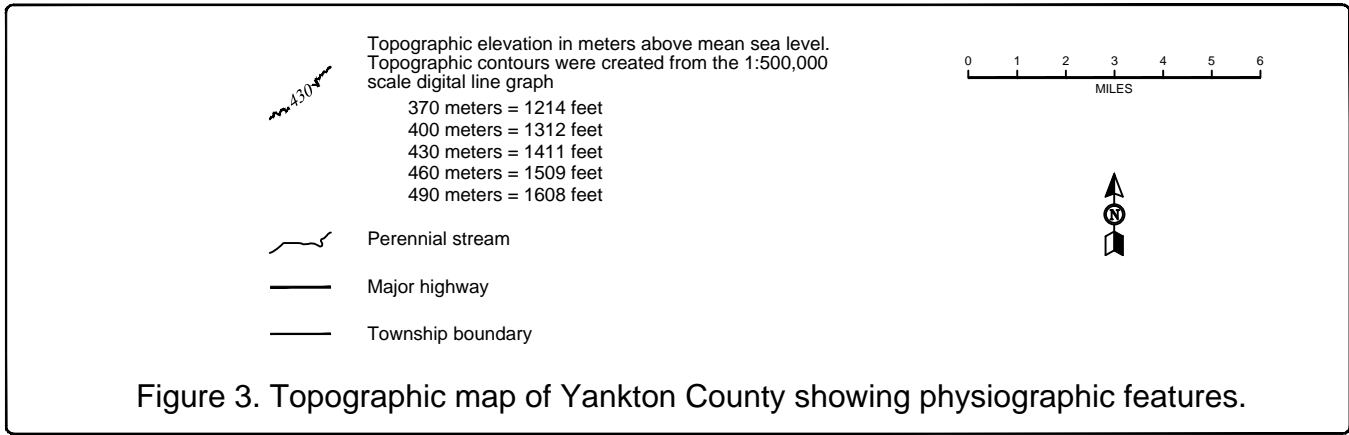
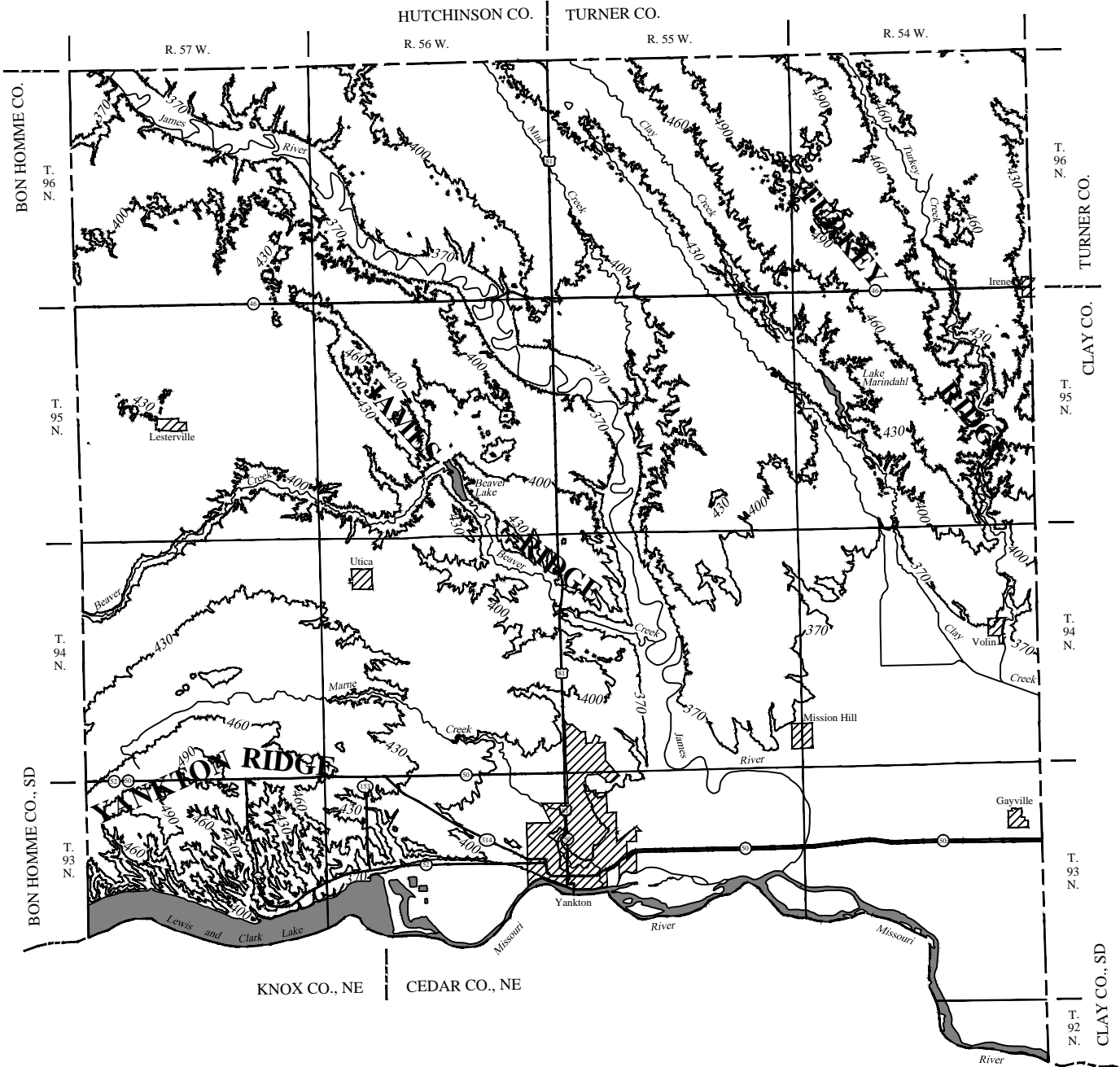
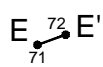
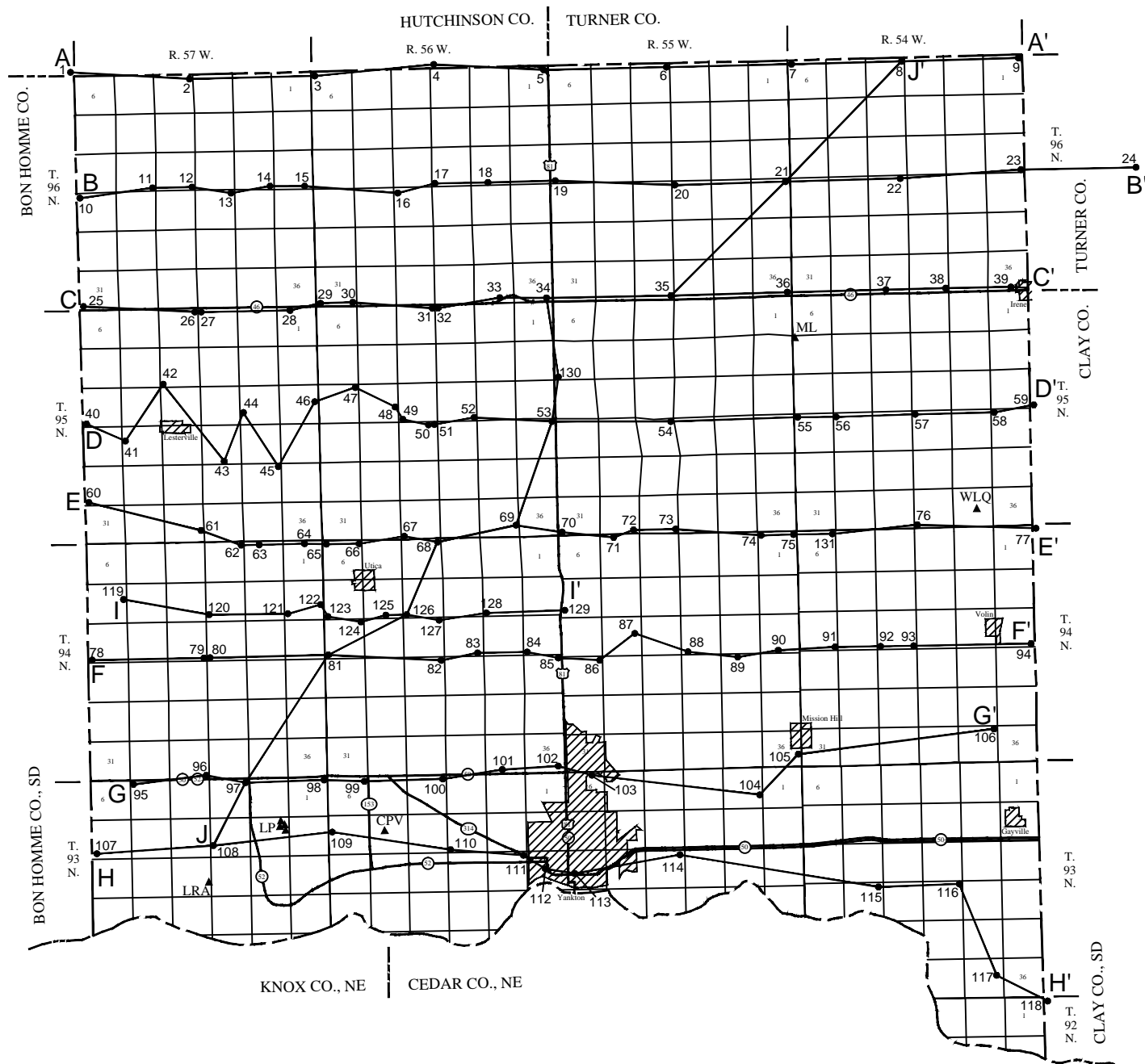


Figure 3. Topographic map of Yankton County showing physiographic features.

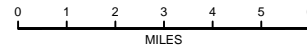


Test hole and line of cross section. Numbers are map location numbers (MLN) and refer to location of logs on the cross sections and in appendices A and B



Measured section
 WLQ = Wakonda lime quarry
 ML = northwest Marindahl Lake
 CPV = old cement plant valley
 LP = Lake Port locality composite
 includes Lake Port supplement
 LRA = Lesterville Recreational Area

- Major highway
- - - Township boundary
- Section line



6	5	4	3	2	1
7	8	9	10	11	12
18	17	16	15	14	13
19	20	21	22	23	24
30	29	28	27	26	25
31	32	33	34	35	36

Sectionized Township

Figure 4. Index map of Yankton County showing locations of geologic cross sections and measured sections.

Figure 5. Legend for the geologic cross sections (figs. 6 through 15) in Yankton County, South Dakota.

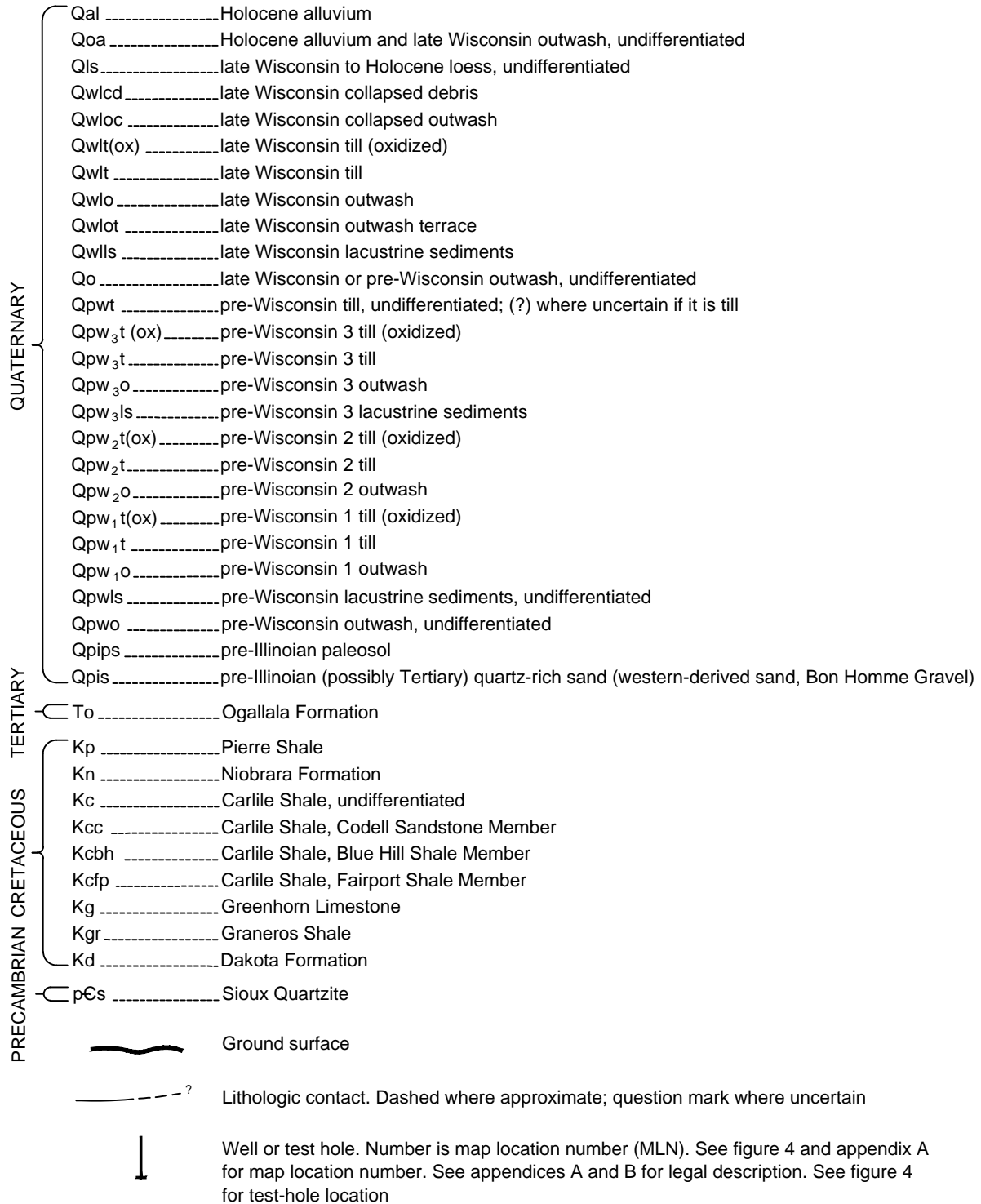


Figure 6. Geologic cross section A-A'

West ← → East

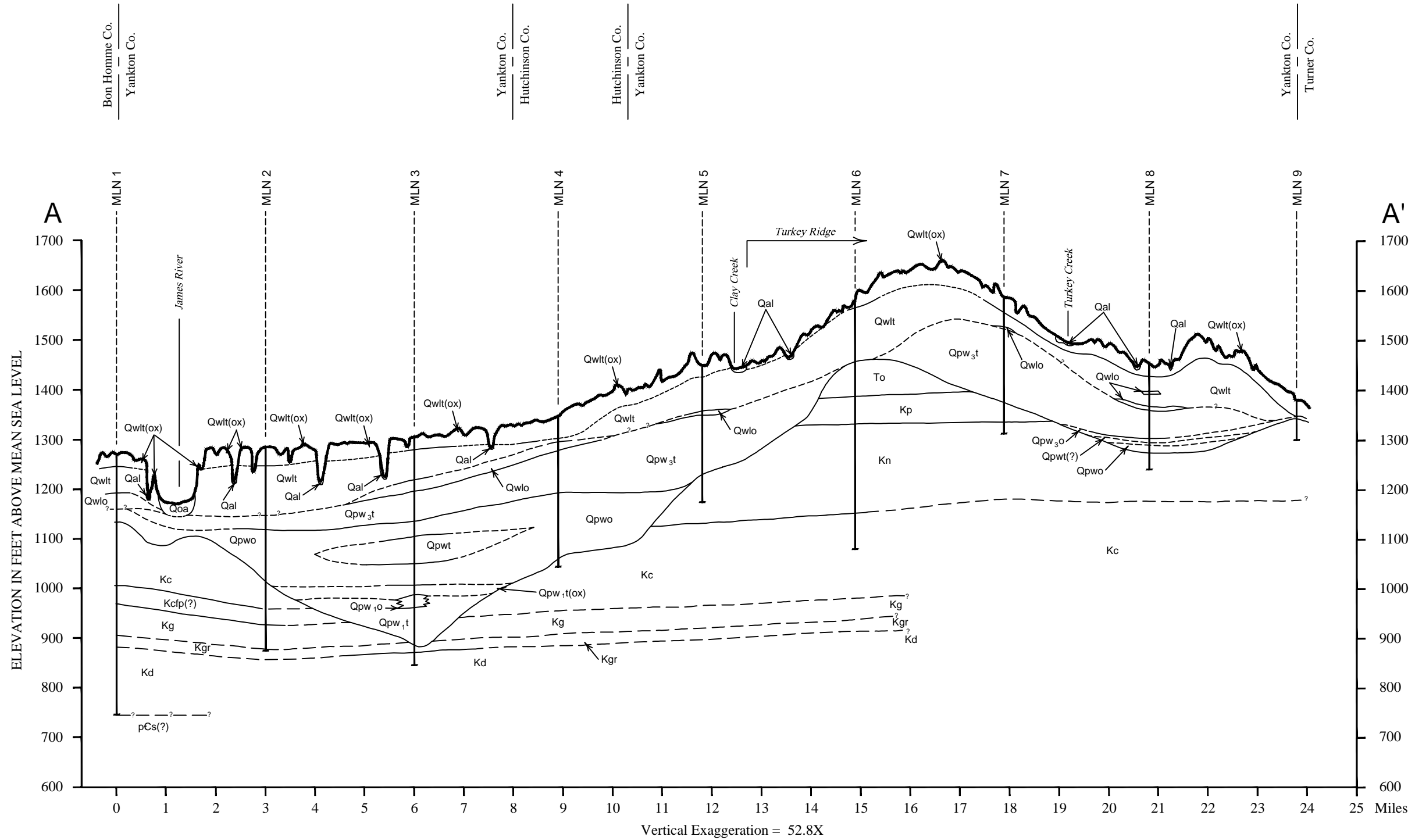


Figure 7. Geologic cross section B-B'

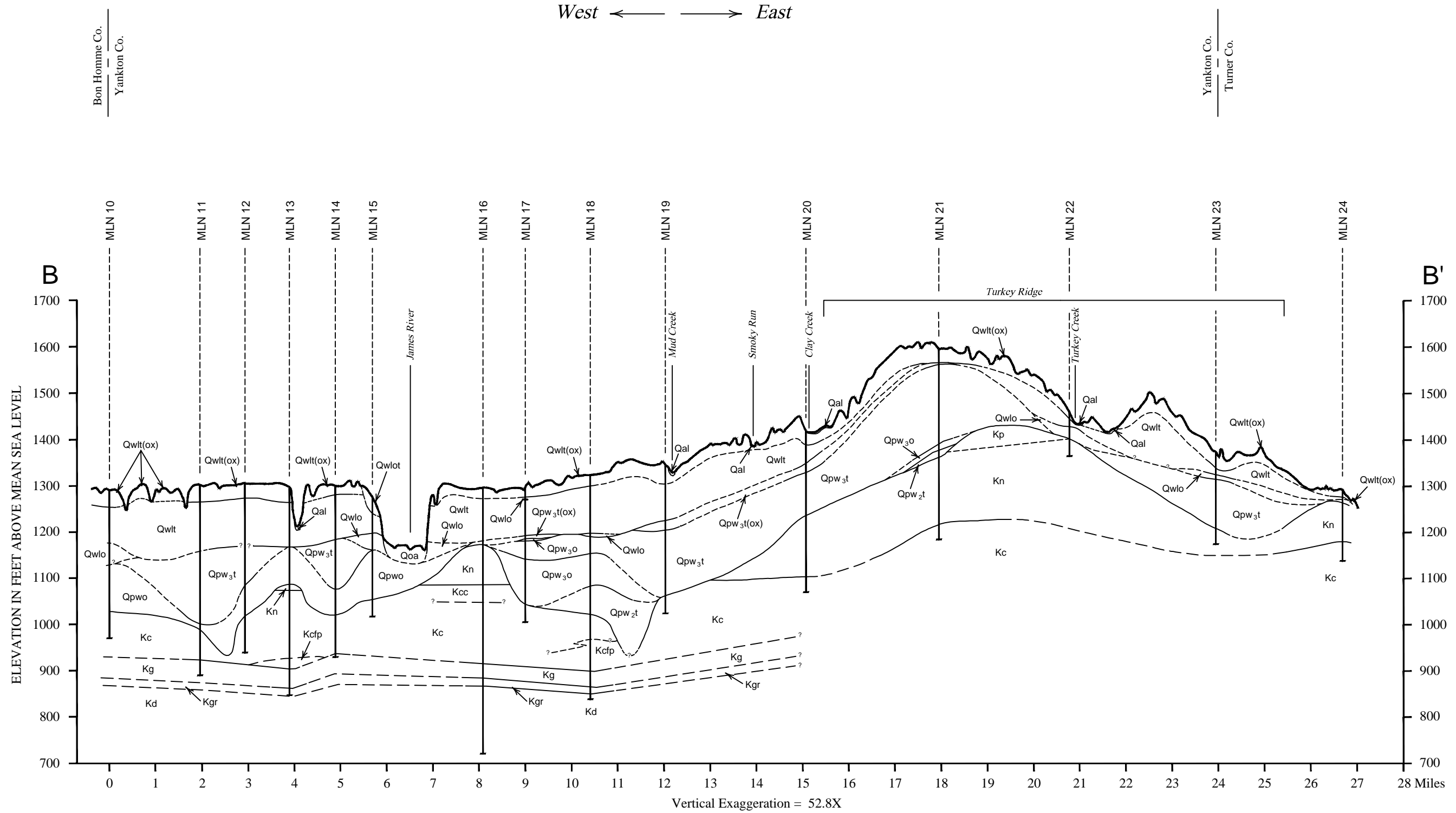


Figure 8. Geologic cross section C-C'

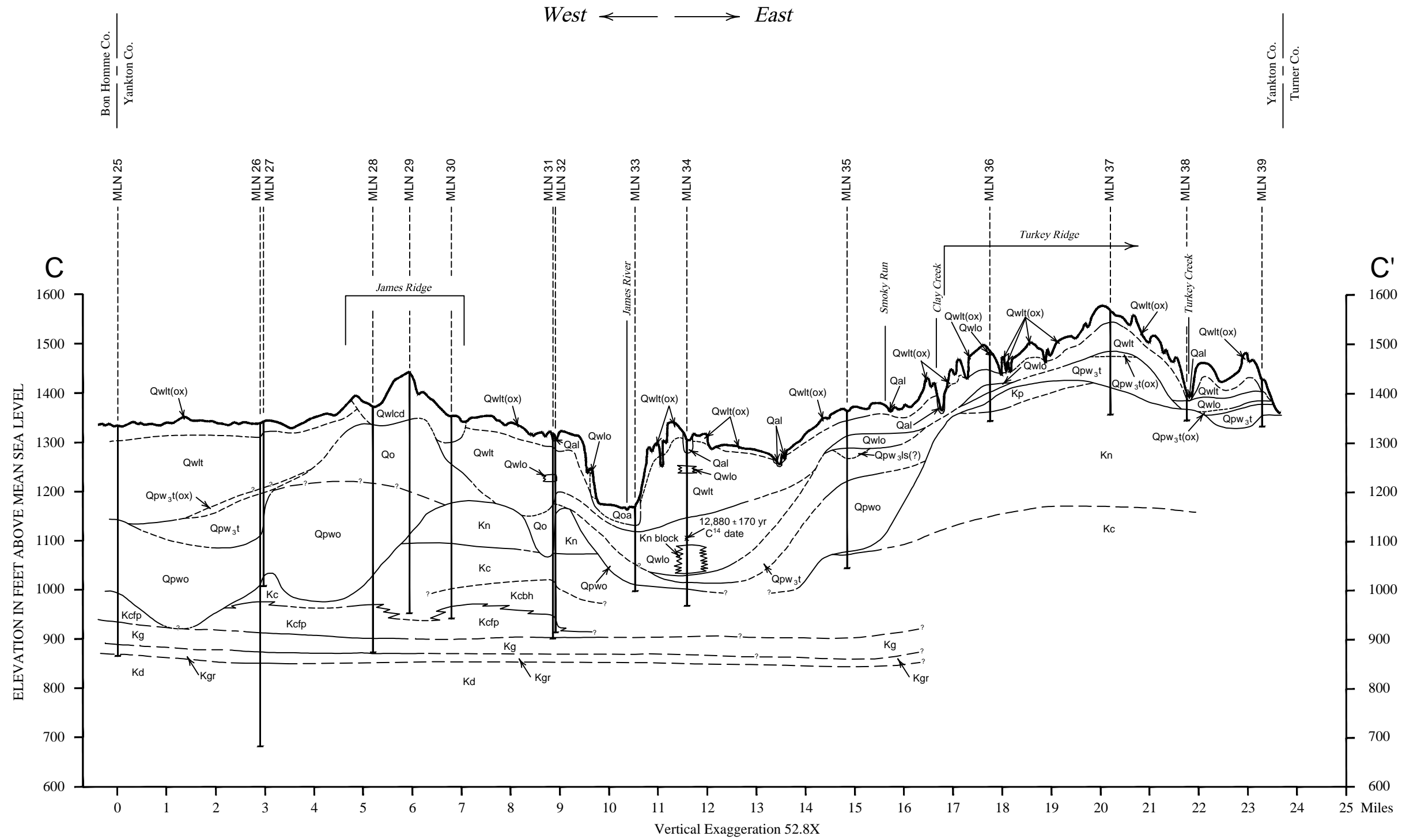


Figure 12. Geologic cross section G-G'

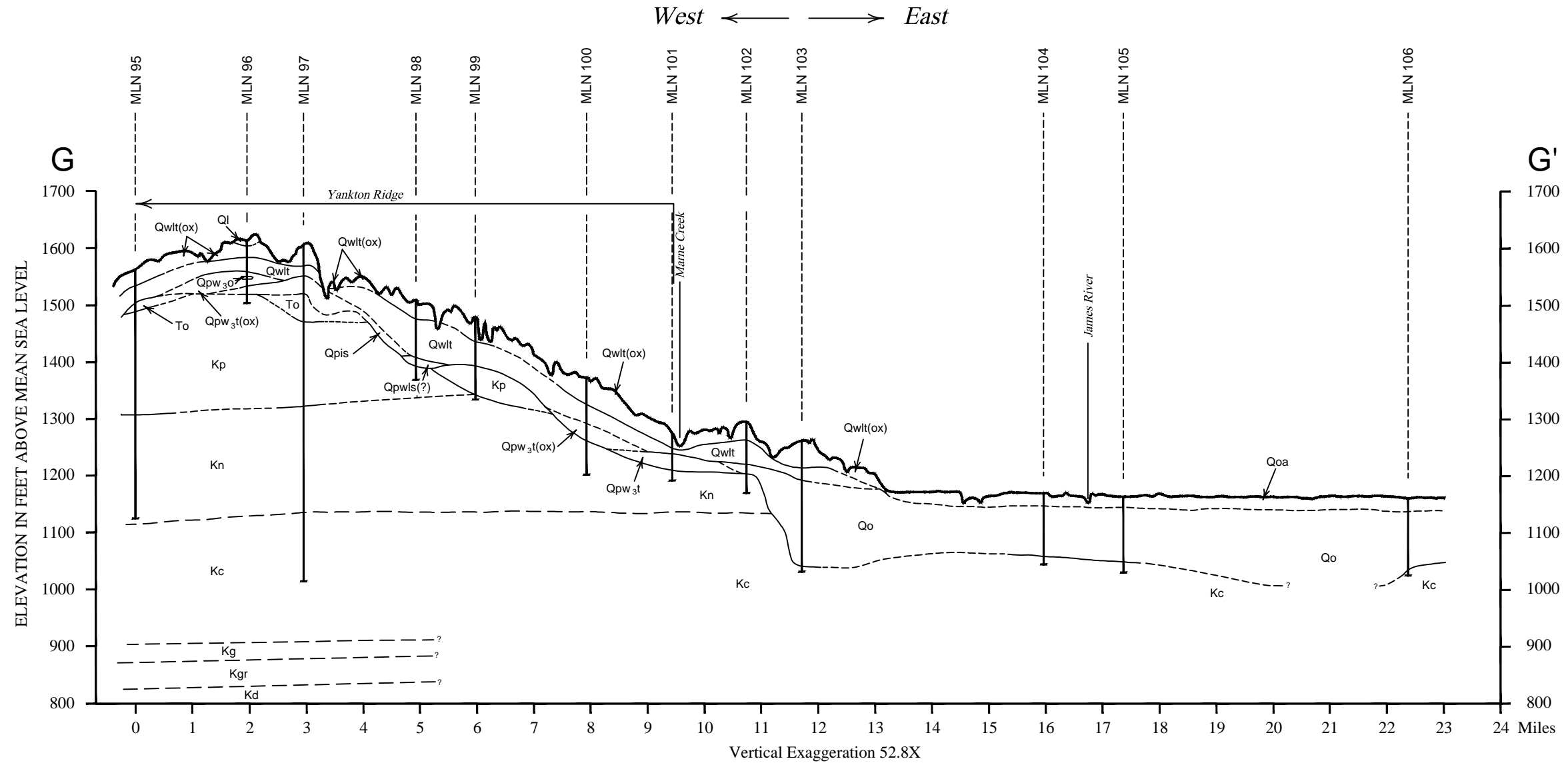


Figure 13. Geologic cross section H-H'

West ← → East

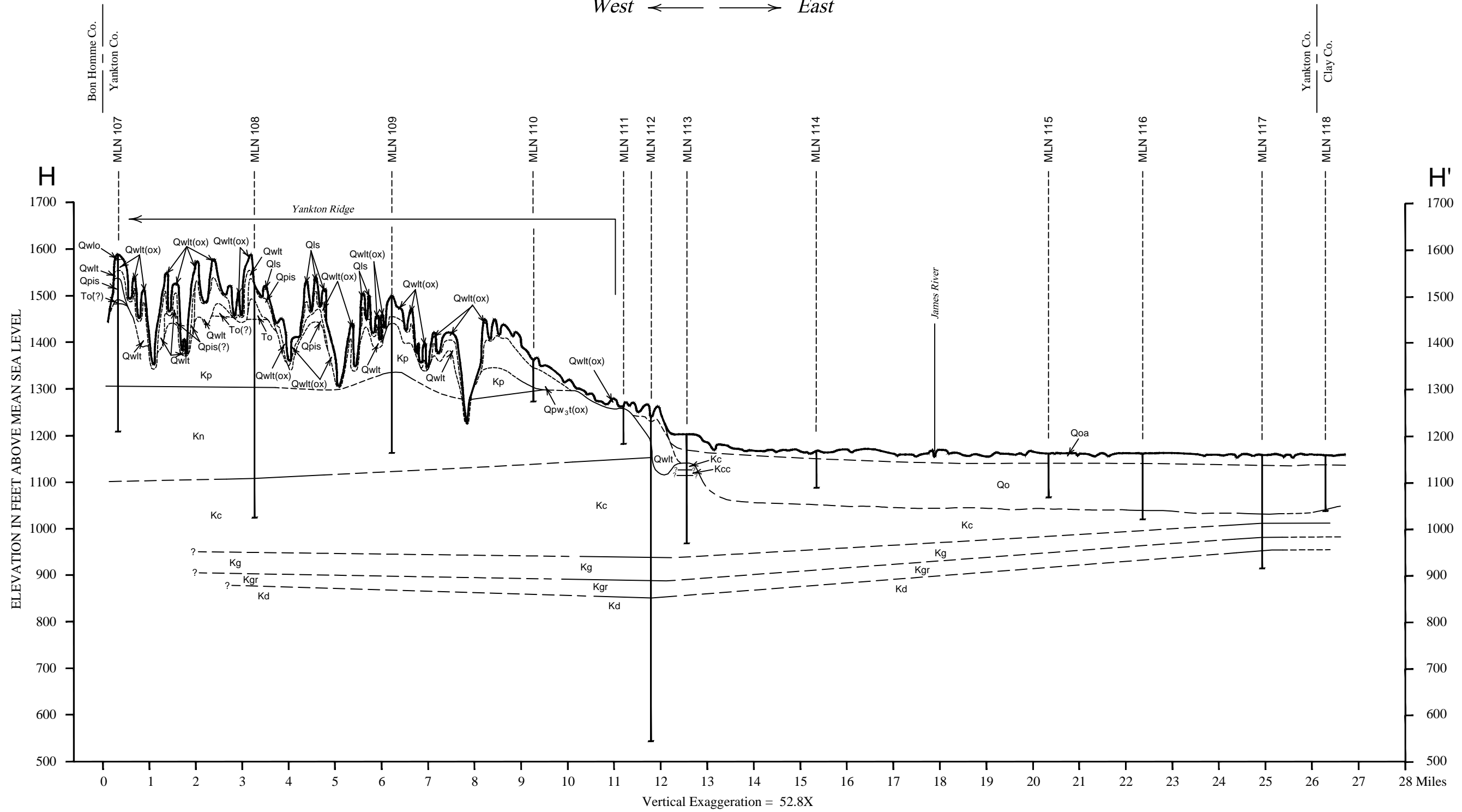
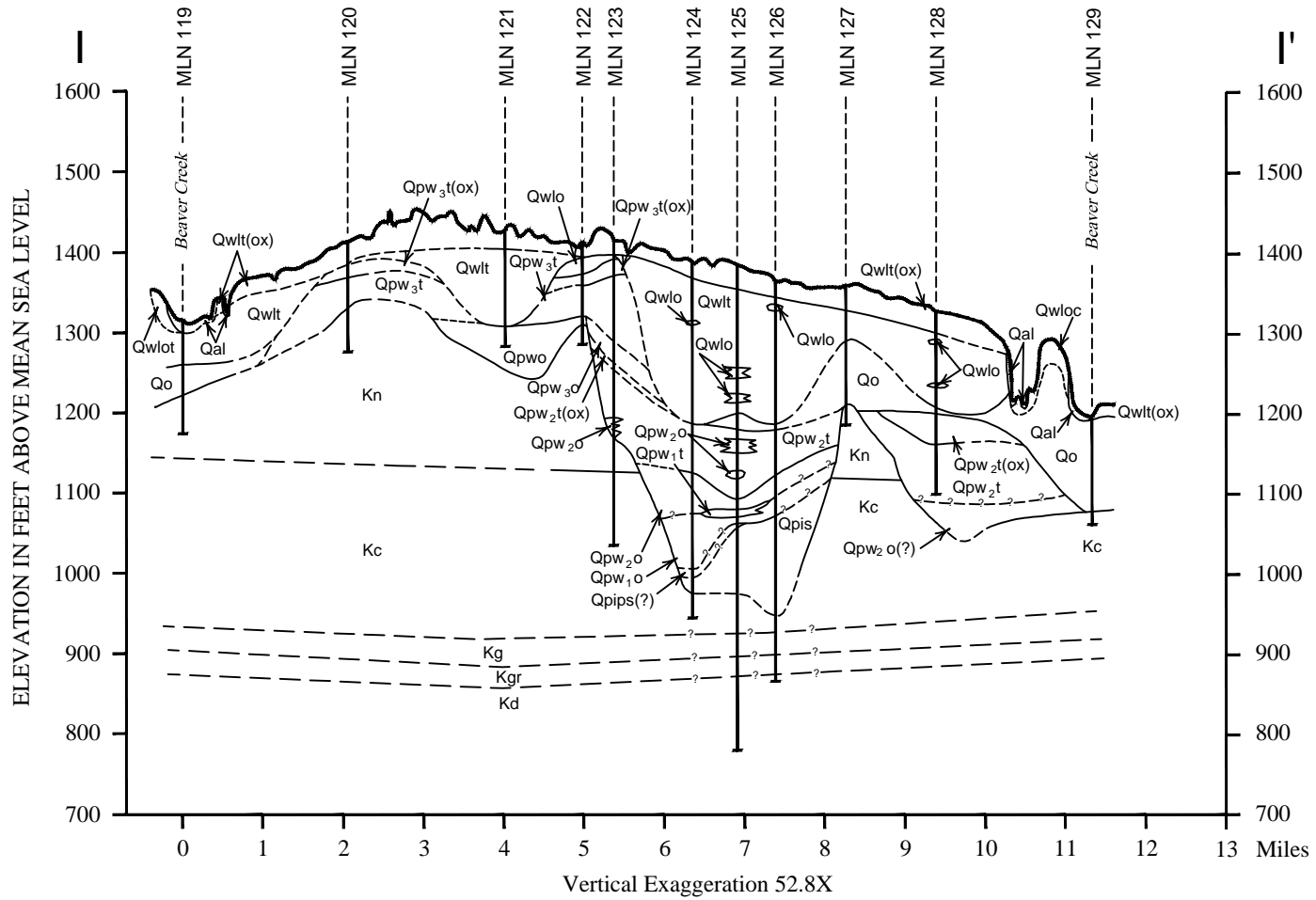


Figure 14. Geologic cross section I-I'

West ← → East



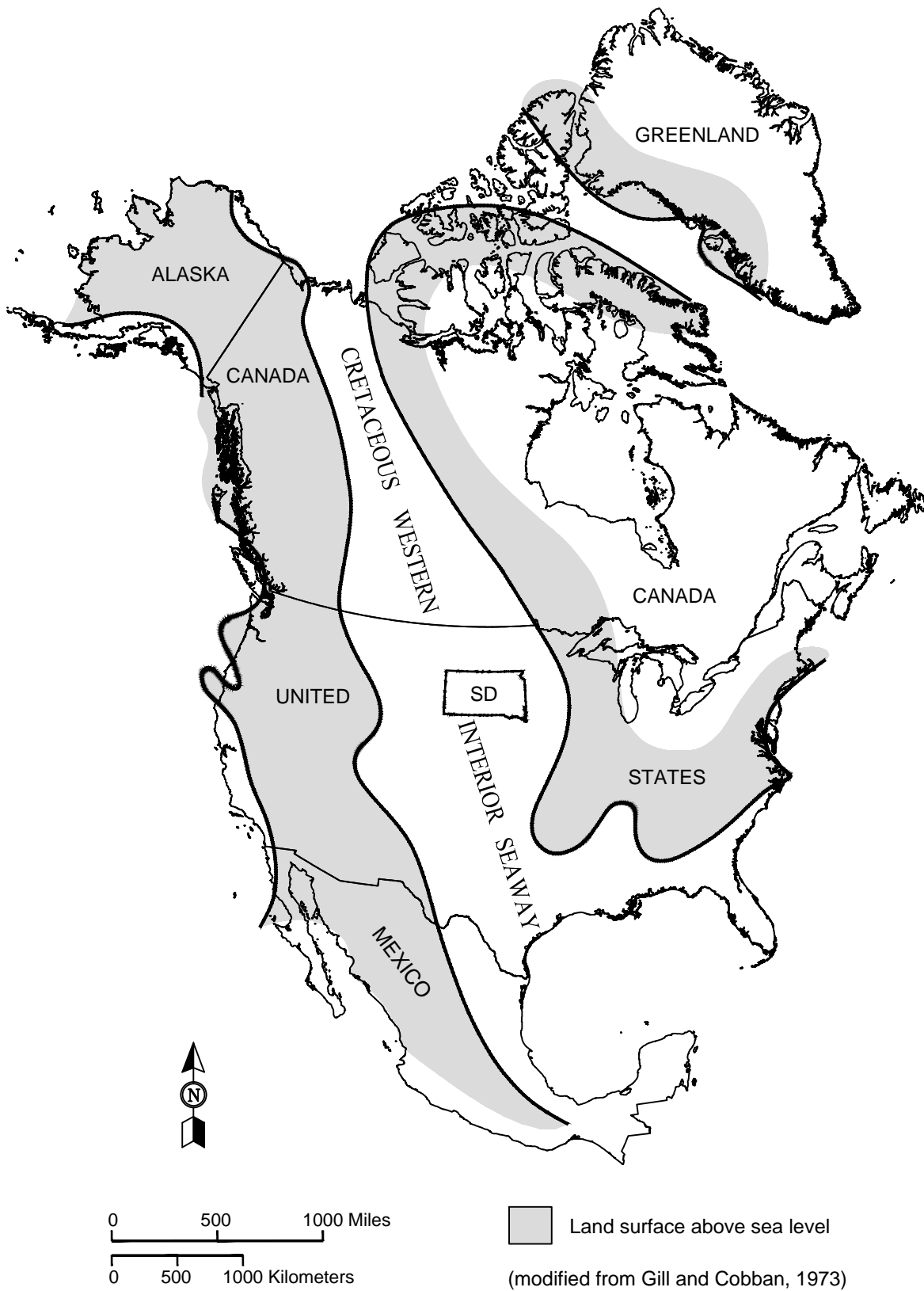
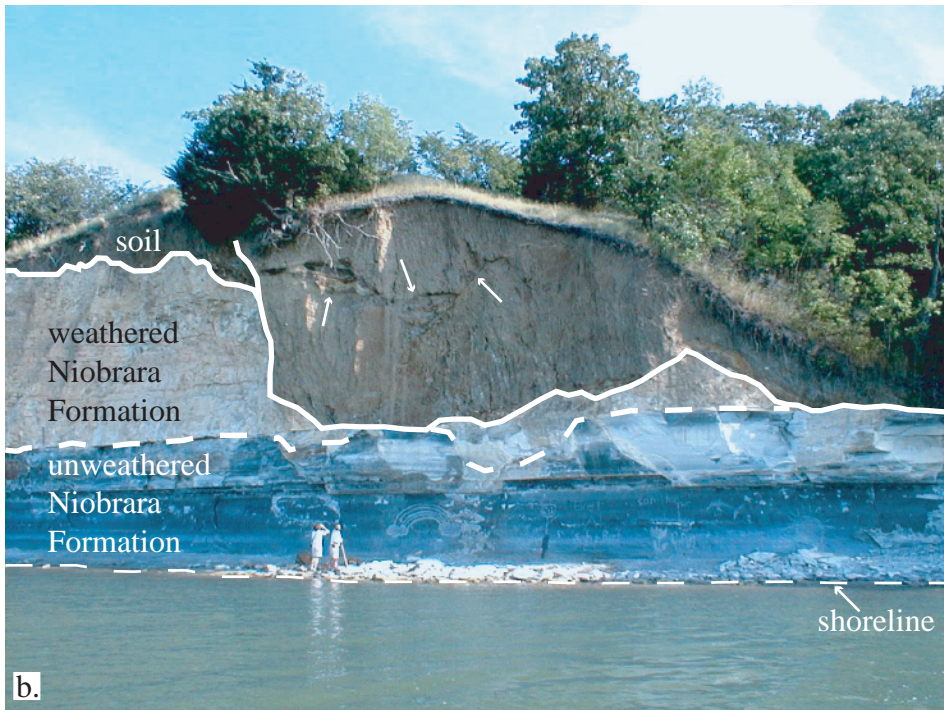
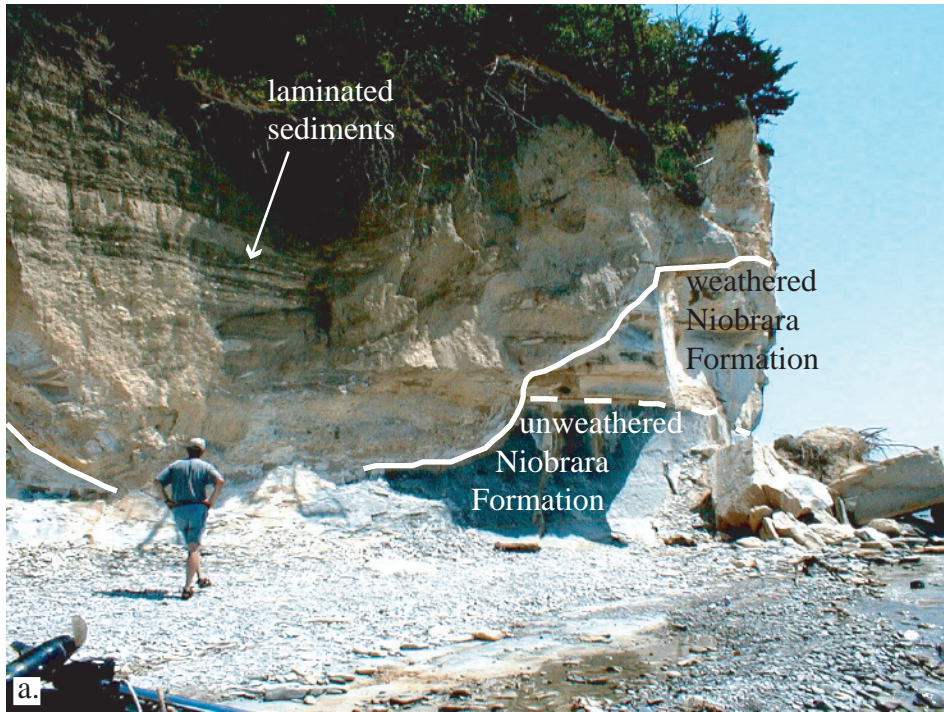


Figure 16. Map showing probable extent of the Western Interior Seaway during a portion of the Late Cretaceous Period.



Thick solid lines show contacts between Niobrara Formation and younger sediments; thick dashed lines show the contact between weathered and unweathered Niobrara Formation; thin dashed line in b. shows the shoreline; arrows in b. show a possible contact between older cut and fill sediments and younger deposits.

Figure 17. Cut and fill features in the Niobrara Formation along the north shore of the Lewis and Clark Lake, Yankton County, South Dakota.

JAMES LOBE

DES MOINES LOBE

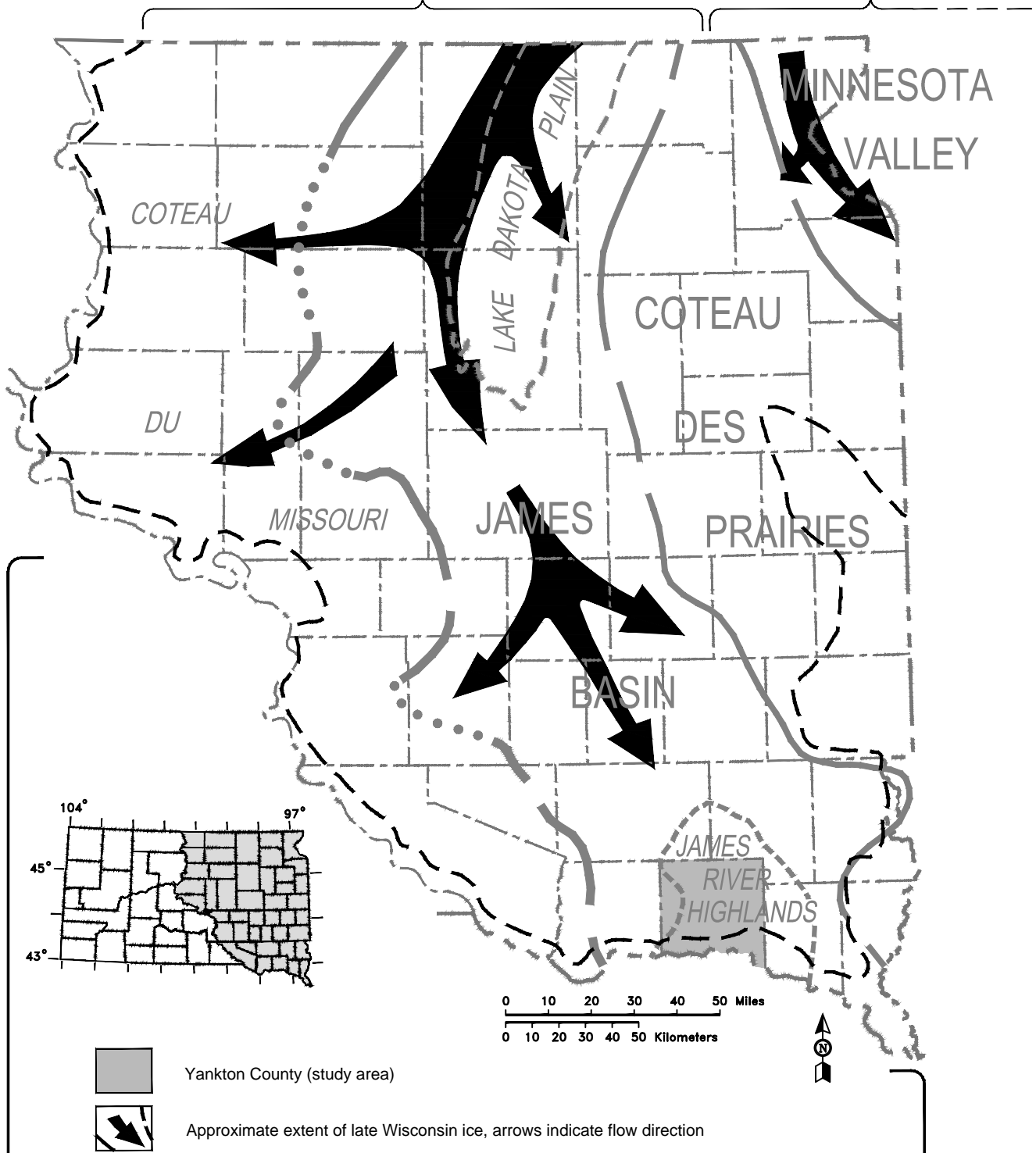


Figure 18. Generalized relationship of James lobe and Des Moines lobe ice to eastern South Dakota.