

PEGMATITES IN THE BEECHER ROCK BASIN

CUSTER COUNTY SOUTH DAKOTA

RANGE 4 EAST

STATE GEOLOGICAL SURVEY
VERMILLION
1944

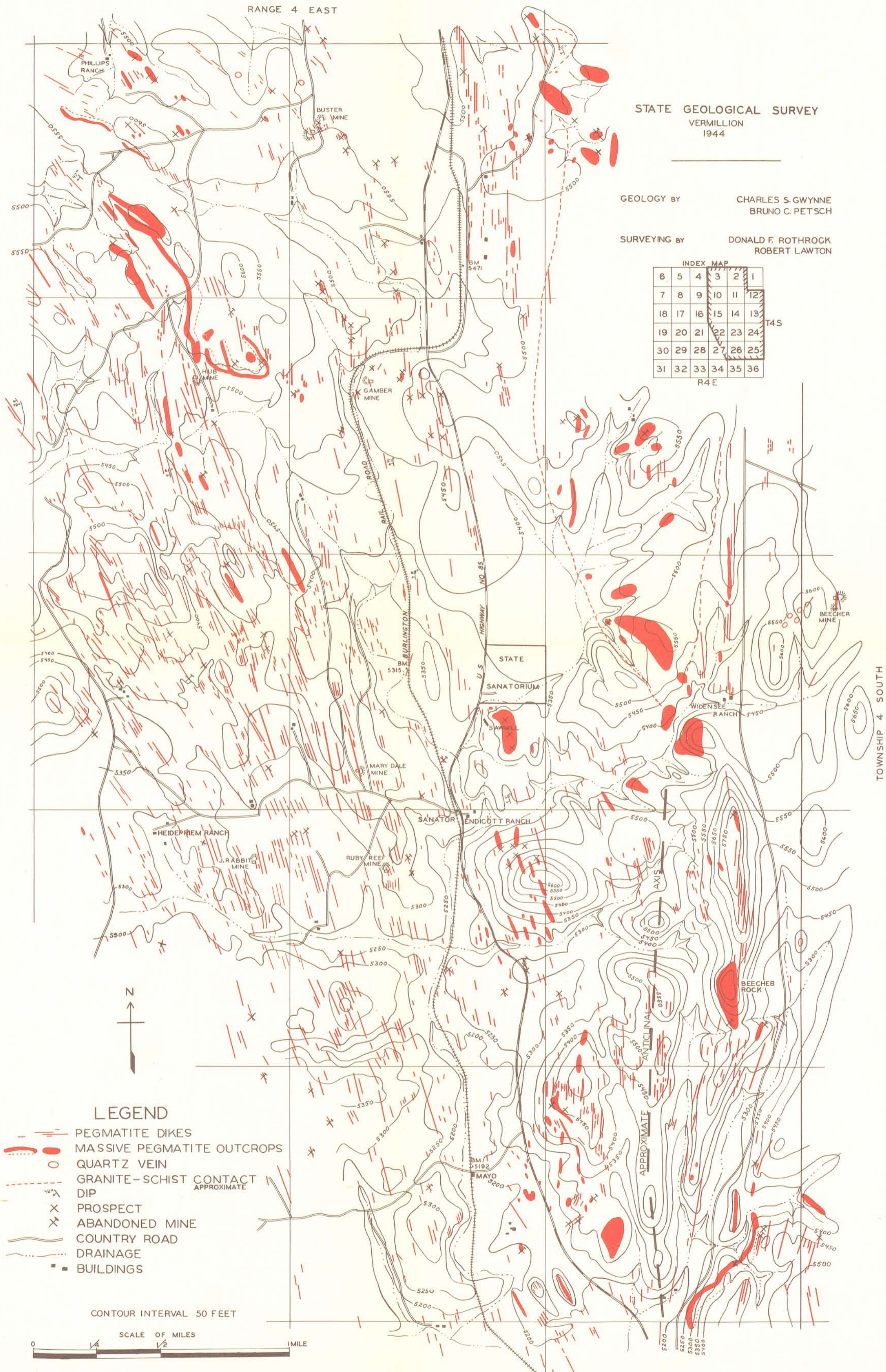
GEOLOGY BY CHARLES S. GWYNNE
BRUNO C. PETSCH

SURVEYING BY DONALD F. ROTHROCK
ROBERT LAWTON

INDEX MAP

6	5	4	3	2	1
7	8	9	10	11	12
18	17	16	15	14	13
19	20	21	22	23	24
30	29	28	27	26	25
31	32	33	34	35	36

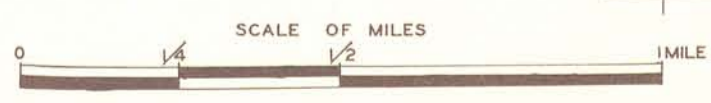
T4S
R4E



LEGEND

- PEGMATITE DIKES
- MASSIVE PEGMATITE OUTCROPS
- QUARTZ VEIN
- GRANITE-SCHIST CONTACT APPROXIMATE
- DIP
- PROSPECT
- ABANDONED MINE
- COUNTRY ROAD
- DRAINAGE
- BUILDINGS

CONTOUR INTERVAL 50 FEET



TOWNSHIP 4 SOUTH