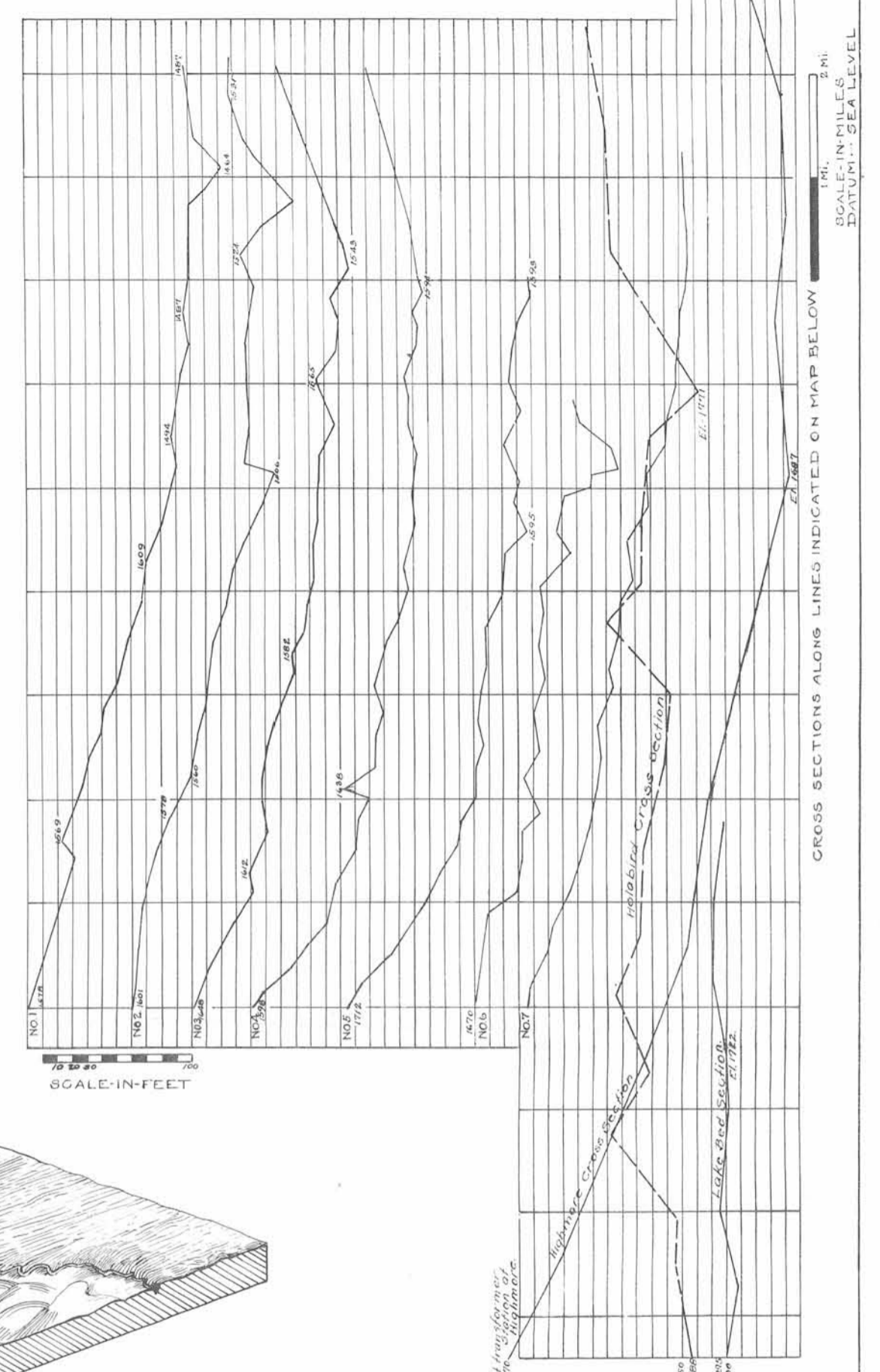


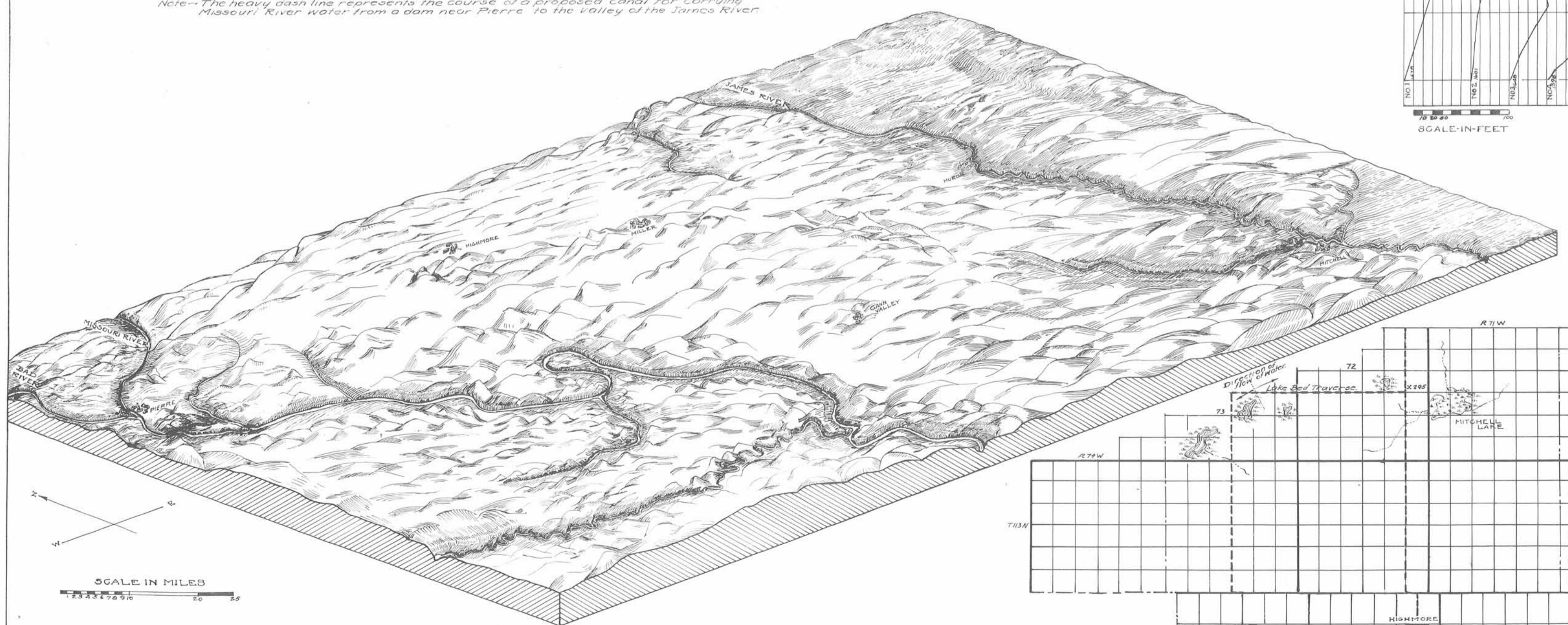
CENTRAL SOUTH DAKOTA SHOWING 100 FT. CONTOUR INTERVALS
TOPOGRAPHICAL DATA FROM U.S. GEOLOGICAL SURVEY

Note-- The heavy dash line represents the course of a proposed canal for carrying Missouri River water from a dam near Pierre to the valley of the James River.



SCALE IN FEET

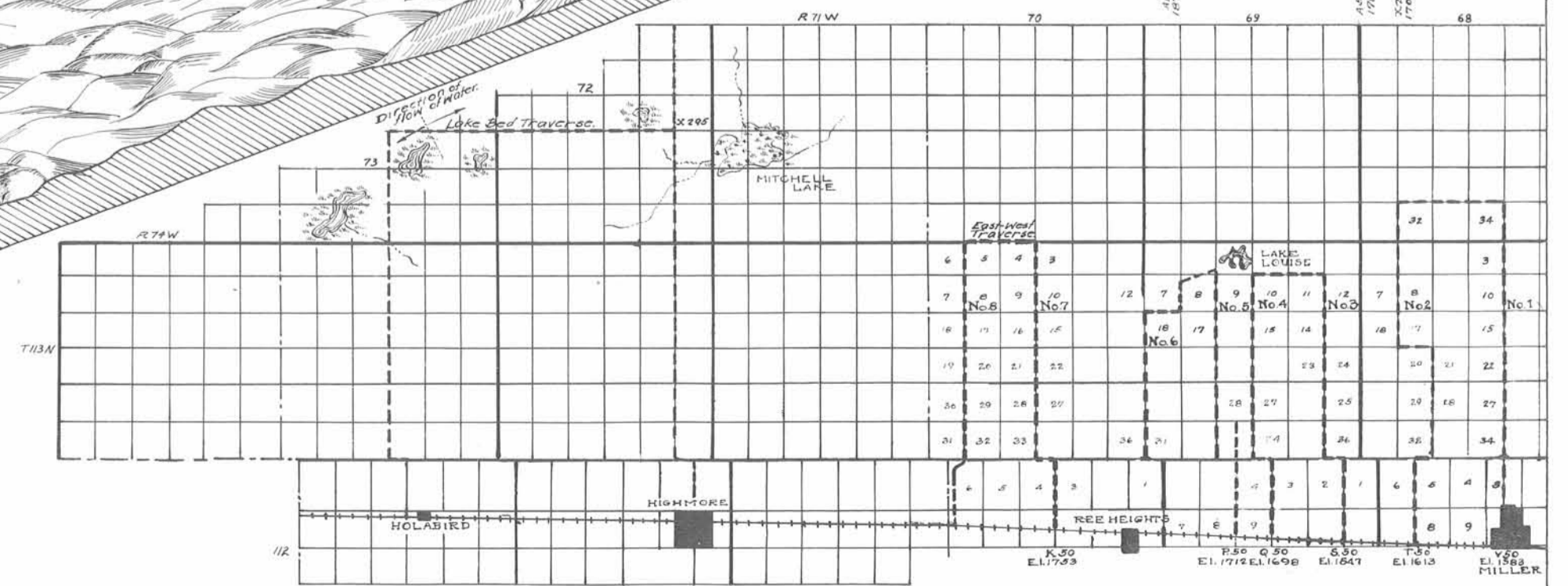
CROSS SECTIONS ALONG LINES INDICATED ON MAP BELOW
SCALE IN MILES
DATUM: SEA LEVEL



SCALE IN MILES

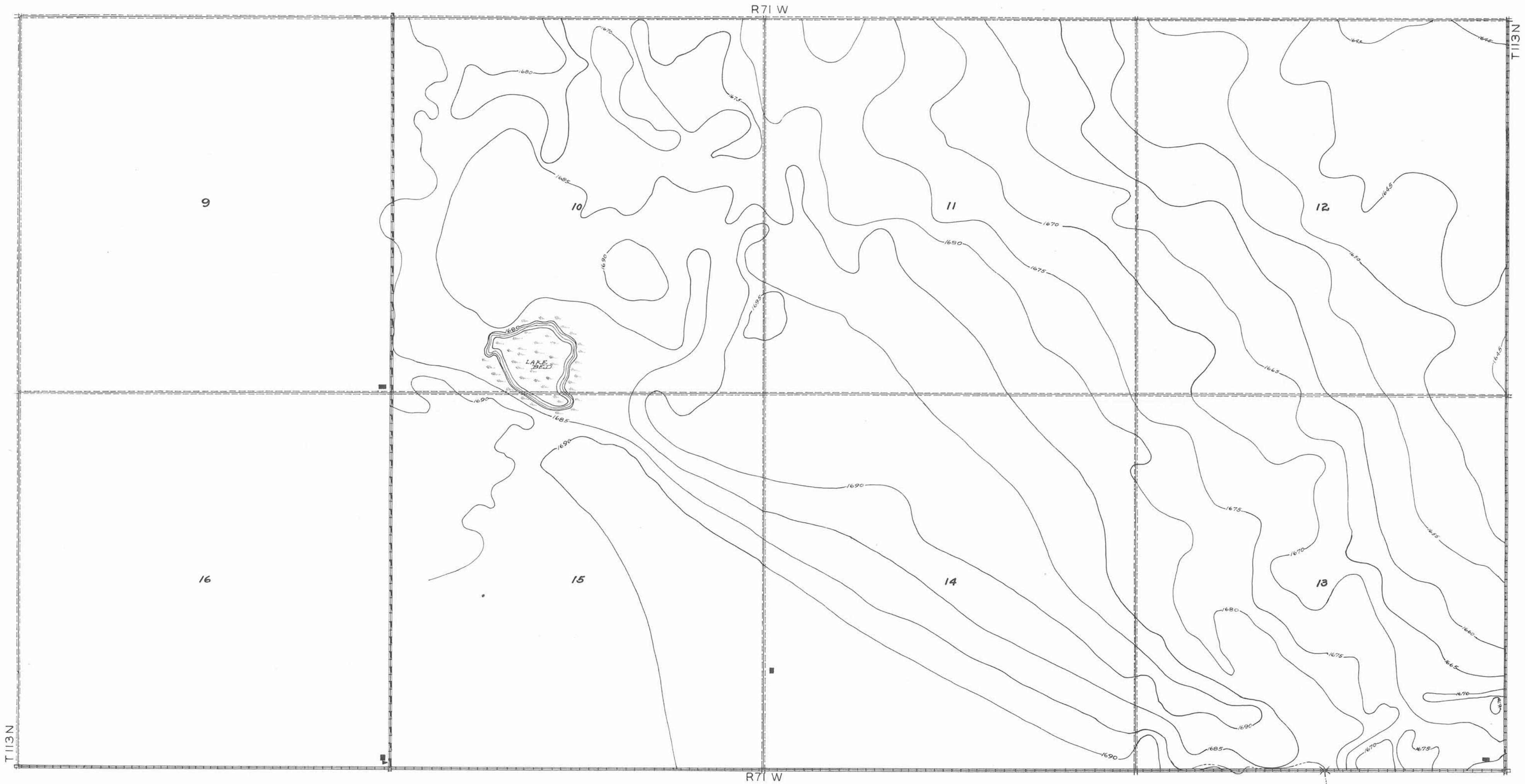
RELIEF MAP SHOWING IN GENERAL MANNER THE TOPOGRAPHY OF CENTRAL SOUTH DAKOTA ACROSS WHICH THE PROPOSED IRRIGATION CANAL MUST PASS

TOPOGRAPHY OF THE LOW LYING AREA
ACROSS THE
MISSOURI VALLEY-JAMES BASIN DIVIDE
HYDE AND HAND COUNTIES, S. D.



KEY MAP SHOWING LOCATIONS OF TRAVERSES
Note - See field notes for elevation data.

SOUTH DAKOTA GEOLOGICAL SURVEY
E. R. ROTHROCK, STATE GEOLOGIST
H. E. BROOKMAN, ENGINEER
1945

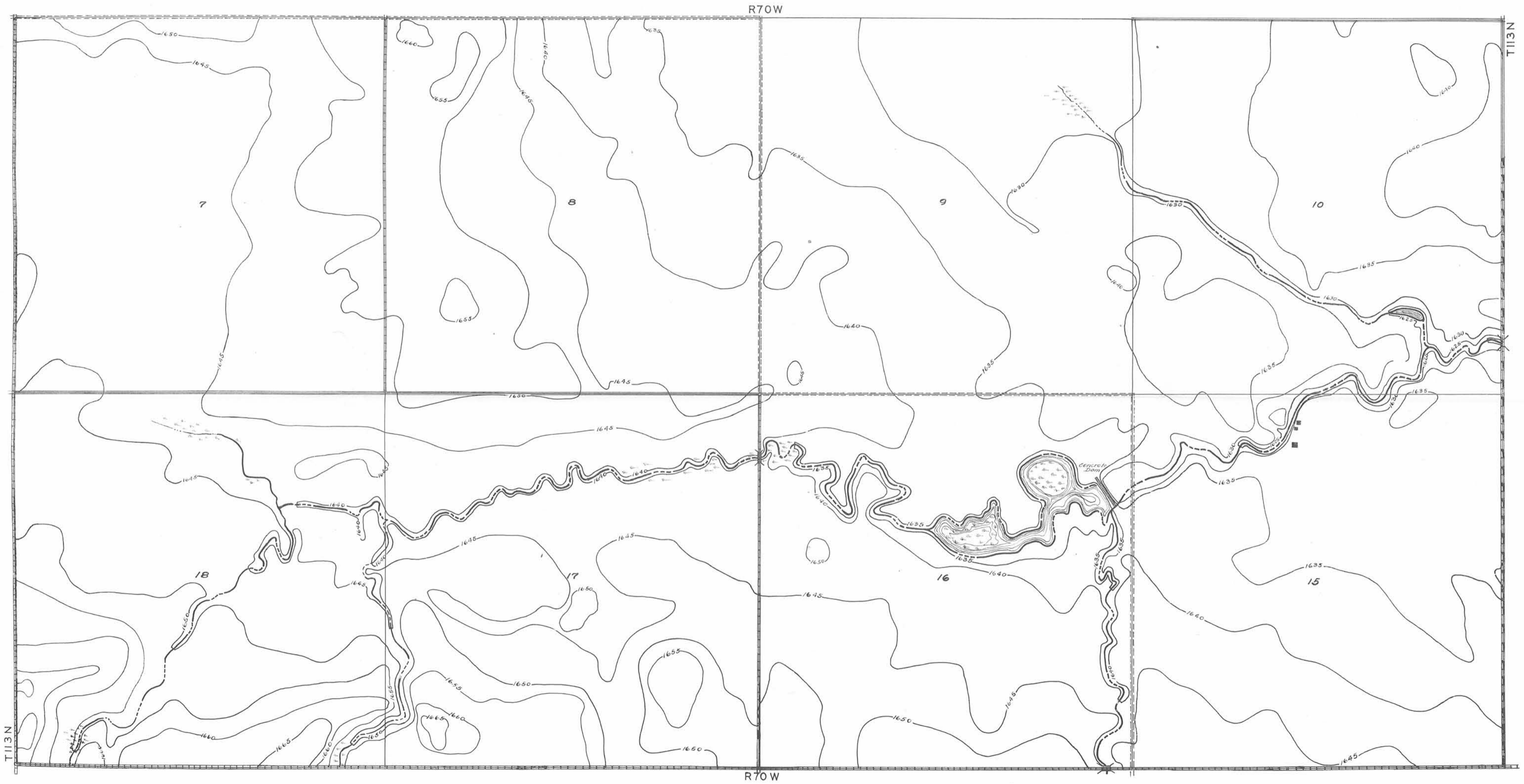


TOPOGRAPHY OF THE LOW LYING AREA
 ACROSS THE
MISSOURI VALLEY—JAMES BASIN DIVIDE
 HYDE AND HAND COUNTIES, S. D.
 SCALE 0 500 1000 FT
 DATUM SEA LEVEL

LEGEND

- PRIMITIVE ROAD
- UNIMPROVED ROAD
- GRADED AND DRAINED ROAD
- SOIL SURFACED ROAD
- METAL SURFACED ROAD
- HIGHWAY BRIDGE—NARROW STREAMS
- CONTOUR LINE
- FARM UNIT
- CHURCH
- SCHOOL

SOUTH DAKOTA GEOLOGICAL SURVEY
 E.P. PROTHROCK, STATE GEOLOGIST
 H.E. BROOKMAN, ENGINEER
 1945

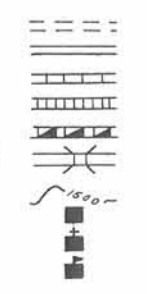


TOPOGRAPHY OF THE LOW LYING AREA
ACROSS THE
MISSOURI VALLEY—JAMES BASIN DIVIDE
HYDE AND HAND COUNTIES, S. D.

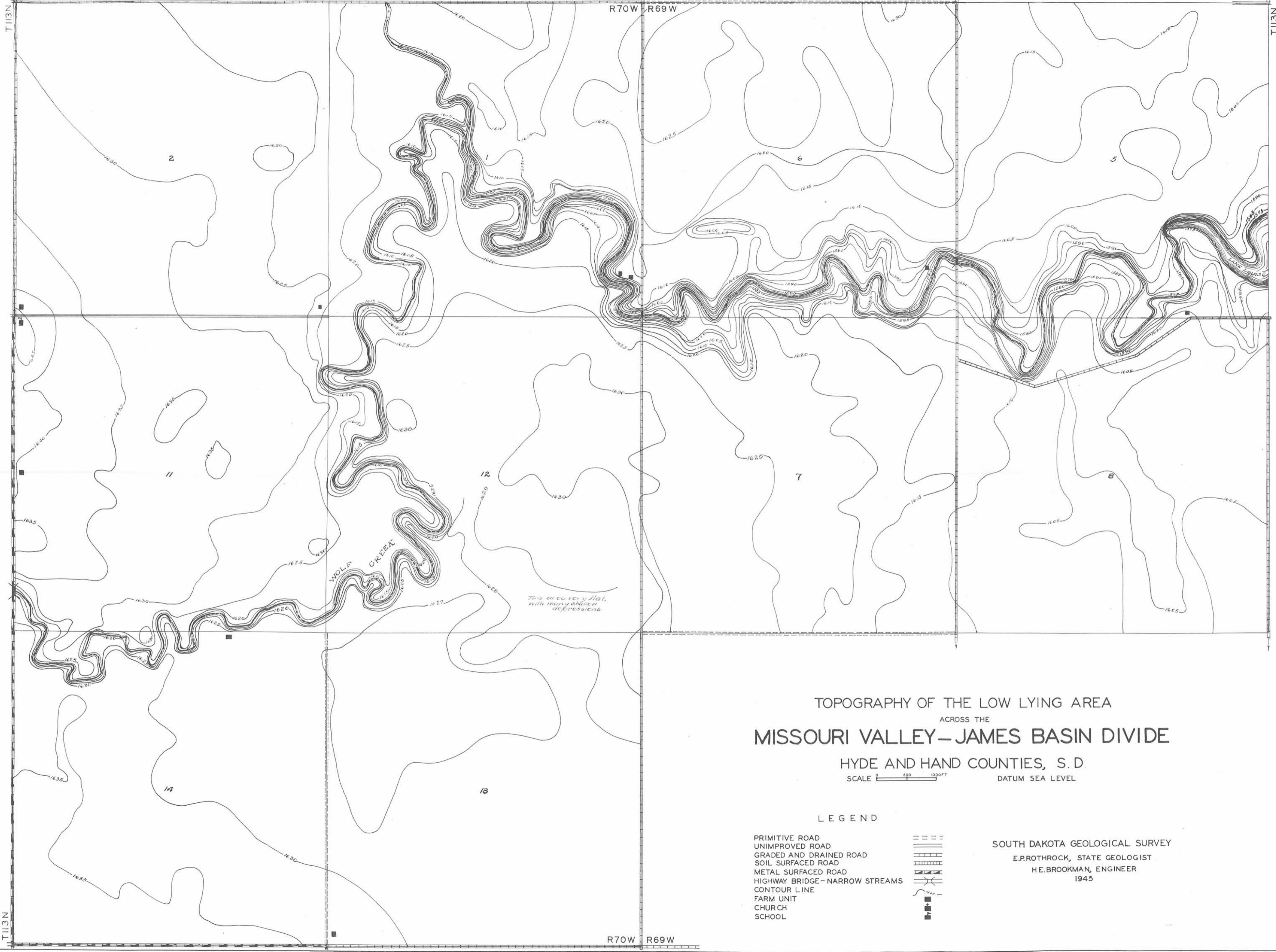
SCALE 0 500 1000 FT
DATUM SEA LEVEL

LEGEND

- PRIMITIVE ROAD
- UNIMPROVED ROAD
- GRADED AND DRAINED ROAD
- SOIL SURFACED ROAD
- METAL SURFACED ROAD
- HIGHWAY BRIDGE—NARROW STREAMS
- CONTOUR LINE
- FARM UNIT
- CHURCH
- SCHOOL



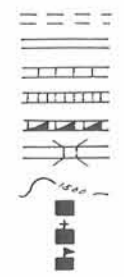
SOUTH DAKOTA GEOLOGICAL SURVEY
E.P.ROTHROCK, STATE GEOLOGIST
H.E.BROOKMAN, ENGINEER
1945



TOPOGRAPHY OF THE LOW LYING AREA
 ACROSS THE
MISSOURI VALLEY—JAMES BASIN DIVIDE
 HYDE AND HAND COUNTIES, S. D.
 SCALE 0 500 1000 FT DATUM SEA LEVEL

LEGEND

- PRIMITIVE ROAD
- UNIMPROVED ROAD
- GRADED AND DRAINED ROAD
- SOIL SURFACED ROAD
- METAL SURFACED ROAD
- HIGHWAY BRIDGE—NARROW STREAMS
- CONTOUR LINE
- FARM UNIT
- CHURCH
- SCHOOL



SOUTH DAKOTA GEOLOGICAL SURVEY
 E.P. PROTHROCK, STATE GEOLOGIST
 H.E. BROOKMAN, ENGINEER
 1945

R70W R69W

T113N

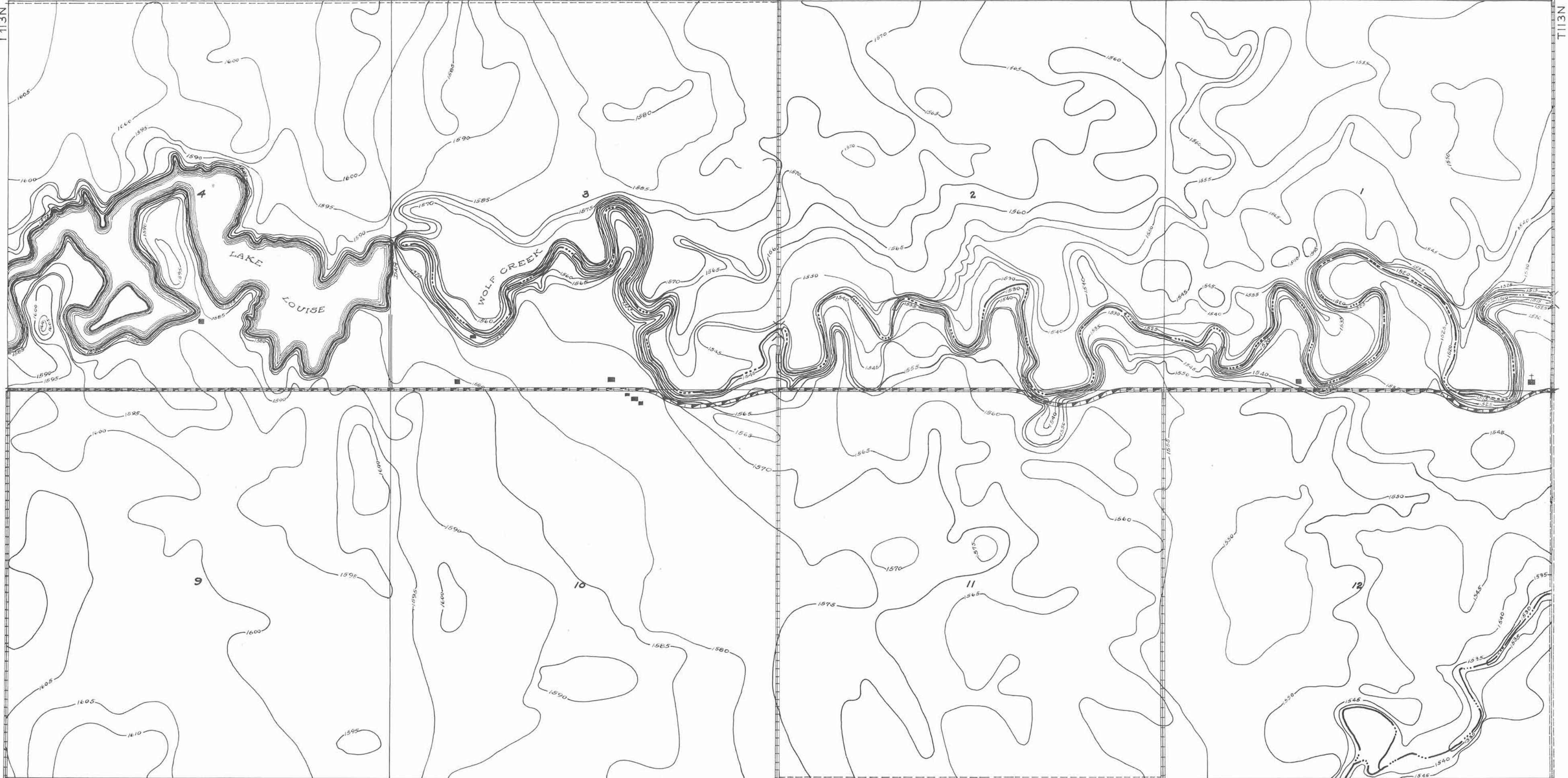
T113N

T113N

T 113N

R 69W

T 114N



TOPOGRAPHY OF THE LOW LYING AREA
 ACROSS THE
MISSOURI VALLEY—JAMES BASIN DIVIDE
 HYDE AND HAND COUNTIES, S. D.
 SCALE 0 500 1000 FT
 DATUM SEA LEVEL

LEGEND

- PRIMITIVE ROAD
- UNIMPROVED ROAD
- GRADED AND DRAINED ROAD
- SOIL SURFACED ROAD
- METAL SURFACED ROAD
- HIGHWAY BRIDGE—NARROW STREAMS
- CONTOUR LINE
- FARM UNIT
- CHURCH
- SCHOOL

SOUTH DAKOTA GEOLOGICAL SURVEY
 E.P.ROTHROCK, STATE GEOLOGIST
 H.E.BROOKMAN, ENGINEER
 1945

R68W

R68W

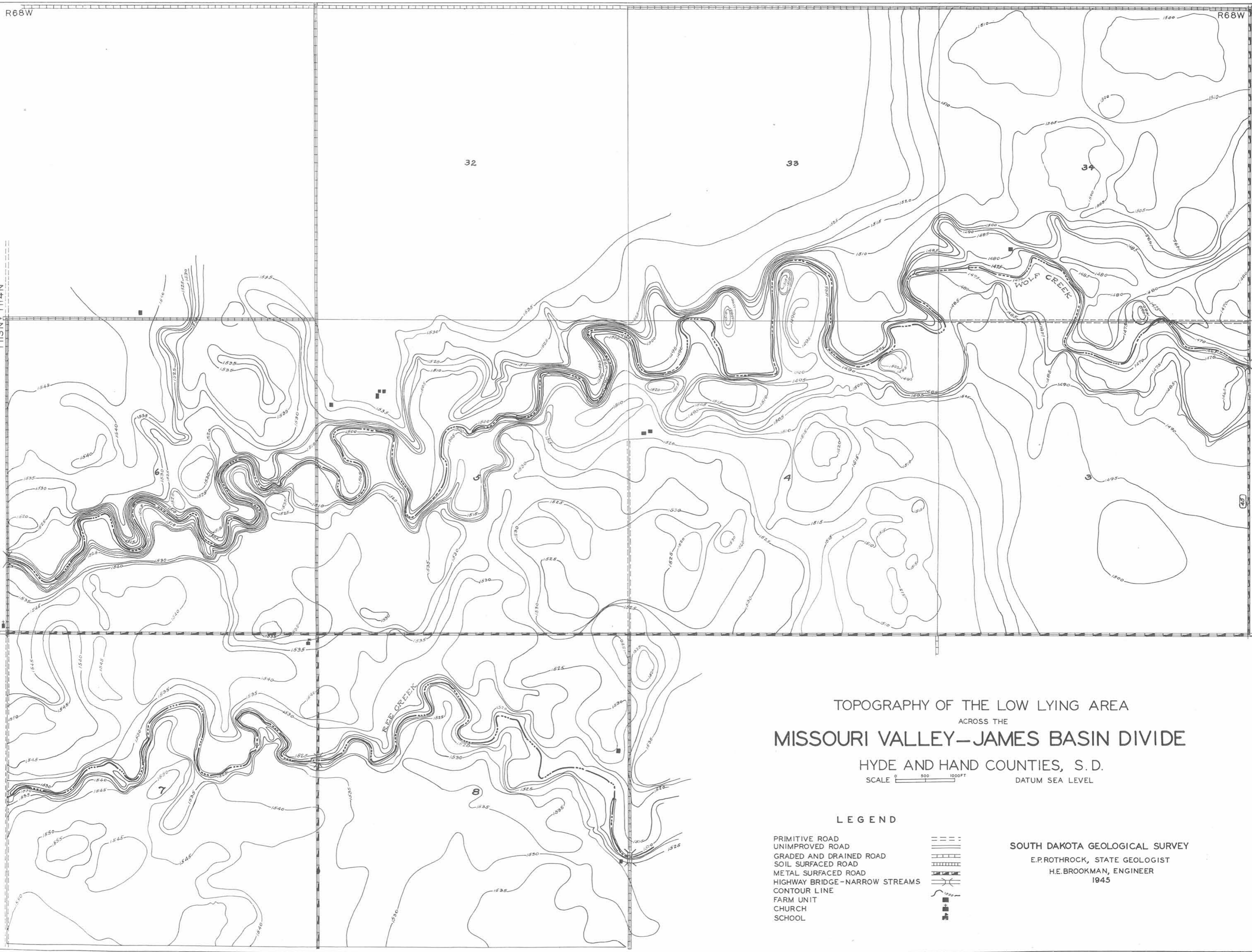
32

33

34

T113N T114N

T113N T114N

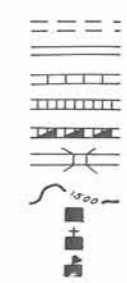


TOPOGRAPHY OF THE LOW LYING AREA
ACROSS THE
MISSOURI VALLEY—JAMES BASIN DIVIDE

HYDE AND HAND COUNTIES, S. D.
SCALE 0 500 1000 FT
DATUM SEA LEVEL

LEGEND

- PRIMITIVE ROAD
- UNIMPROVED ROAD
- GRADED AND DRAINED ROAD
- SOIL SURFACED ROAD
- METAL SURFACED ROAD
- HIGHWAY BRIDGE—NARROW STREAMS
- CONTOUR LINE
- FARM UNIT
- CHURCH
- SCHOOL



SOUTH DAKOTA GEOLOGICAL SURVEY
E.P.ROTHROCK, STATE GEOLOGIST
H.E.BROOKMAN, ENGINEER
1945