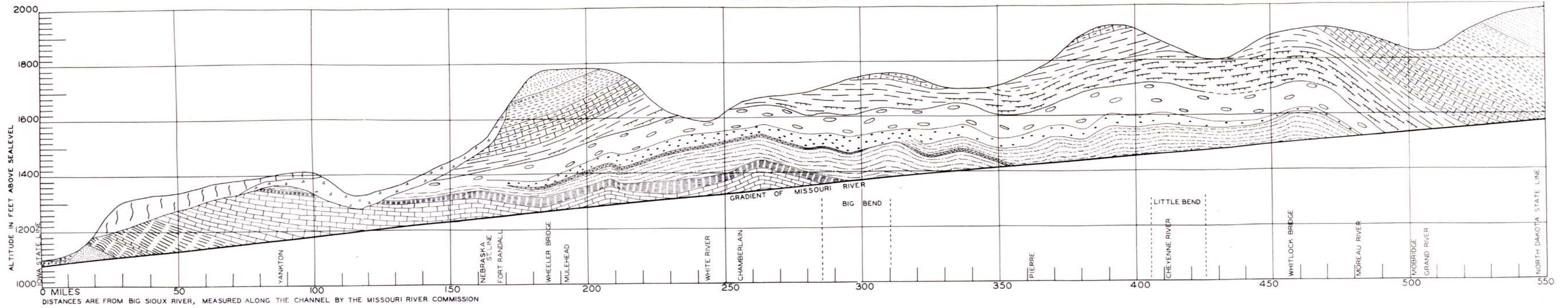


# GEOLOGIC PROFILE OF THE MISSOURI VALLEY

## SOUTH DAKOTA



### LEGEND

#### PLEISTOCENE

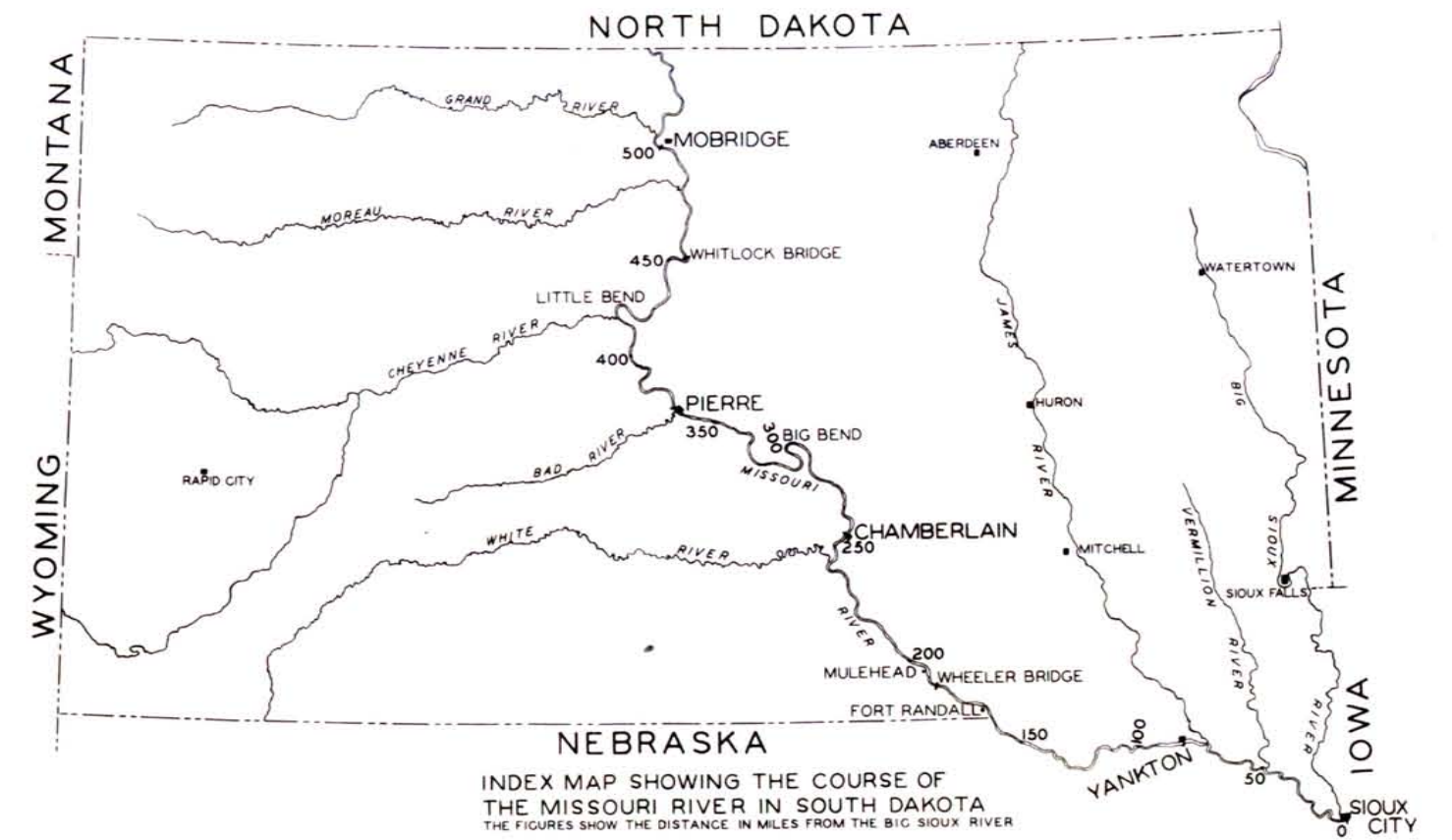
- ALLUVIUM
- LOESS
- DRIFT

ALTITUDE OF BENCH MARKS ON RIVER BRIDGES

YANKTON	NO. N150	1200.38 FEET
WHEELER	J36	1303.46
CHAMBERLAIN	M49	1354.98
PIERRE	W13	1460.15
WHITLOCK	D69	1549.63
MOBRIDGE	X303	1589.26

#### CRETACEOUS

- |                      |                       |
|----------------------|-----------------------|
| <b>MONTANA GROUP</b> | <b>COLORADO GROUP</b> |
| FOX HILLS            | NIOBRARA              |
| PIERRE               | CARLILE               |
| ELK BUTTE            | GREENHORN             |
| MOBRIDGE             | GRANEROS              |
| UPPER VIRGIN CREEK   | DAKOTA                |
| LOWER VIRGIN CREEK   |                       |
| VERENDRYE            |                       |
| OACOMA               | SULLY                 |
| AGENCY               |                       |
| CROW CREEK           |                       |
| GREGORY              |                       |
| SHARON SPRINGS       |                       |



STATE GEOLOGICAL SURVEY  
VERMILION S.D.

1945

BRUNO C. PETSCH GEOLOGIST

INDEX MAP SHOWING THE COURSE OF  
THE MISSOURI RIVER IN SOUTH DAKOTA  
THE FIGURES SHOW THE DISTANCE IN MILES FROM THE BIG SIOUX RIVER