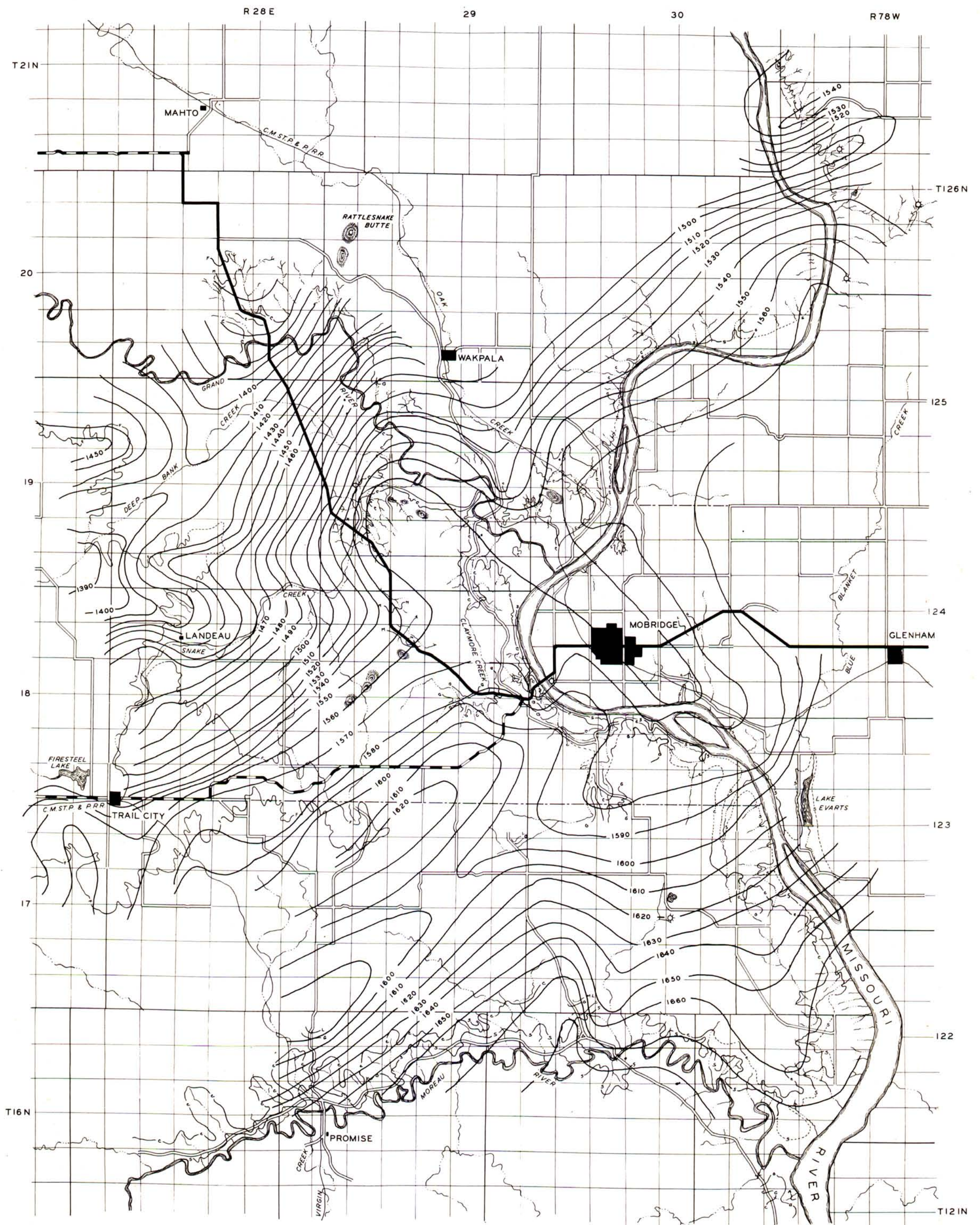


STRUCTURE IN THE VICINITY OF MOBRIDGE

STATE OF SOUTH DAKOTA

GEOLOGICAL SURVEY

OCTOBER, 1946



LEGEND

- | | | | |
|-----|---------------------------------|-------|-------------------------------------|
| ~f~ | BASE OF THE FOX HILLS FORMATION | —+— | RAILROADS |
| ~h~ | TOP OF MOBRIDGE MEMBER | —+—+— | ROADS AND HIGHWAYS |
| ~g~ | GOLDEN CALCITE ZONE | ~ | STREAMS |
| ~l~ | MOBRIDGE LIMESTONE | ⊙ | BUTTES |
| ~c~ | CRAB ZONE | ⊙ | GAS SHOWS |
| ~s~ | TOP OF SILICEOUS VIRGIN CREEK | — | STRUCTURAL CONTOURS DATUM SEA LEVEL |
| ~a~ | TOP OF AGENCY MEMBER | — | CONTOUR INTERVAL 10 FT. |

GEOLOGISTS - E.P. ROTHROCK
 F.G. HOFFMAN
 ENGINEERS - H.R. FOSSLER
 D.F. ROTHROCK
 DRAFTSMAN - H.C. LOCKWOOD

SCALE 0 1 2 3 4 MILES

CONTOURED ON TOP OF SILICEOUS VIRGIN CREEK