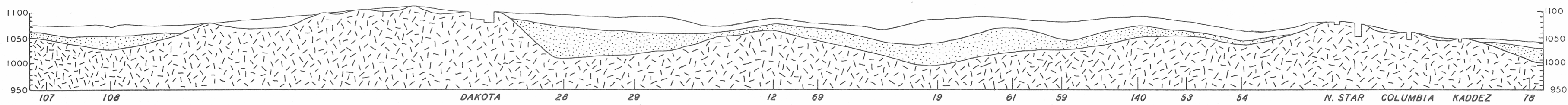
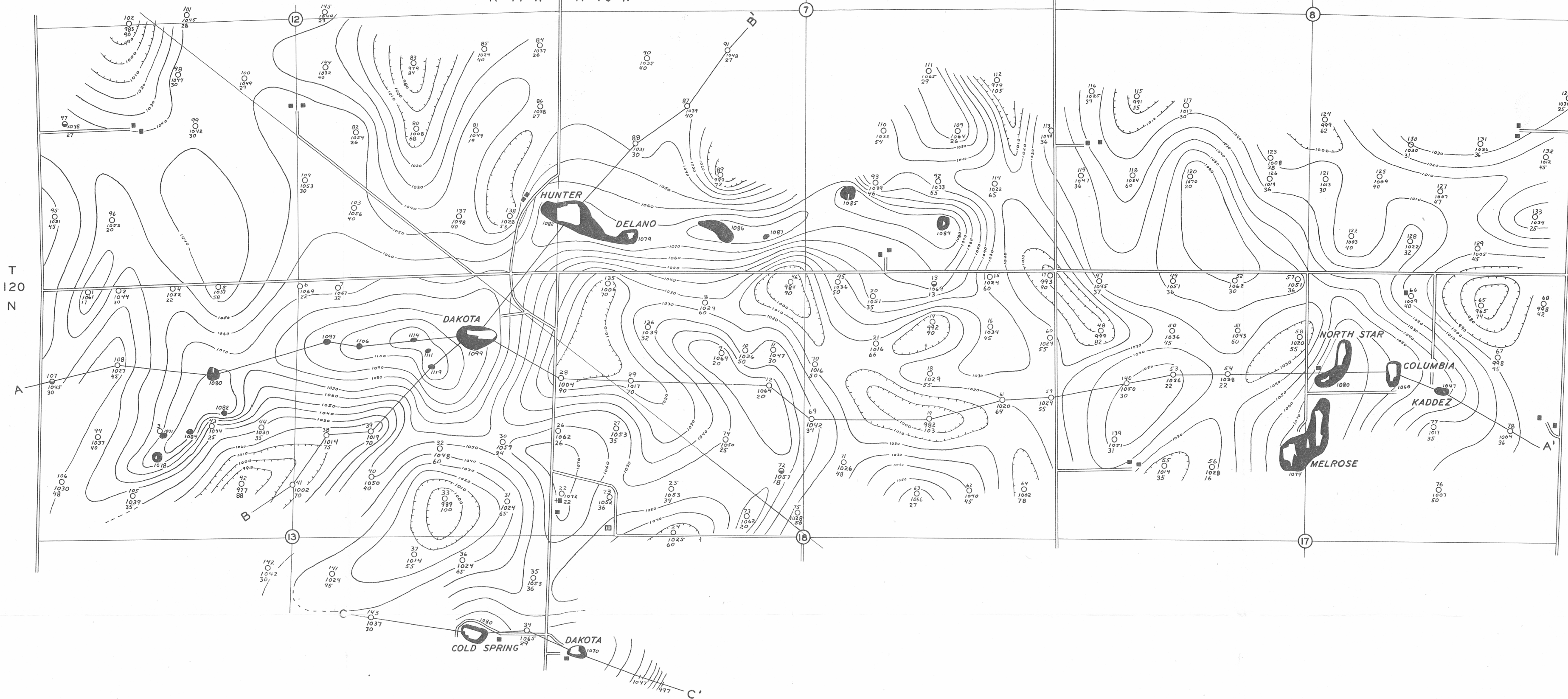
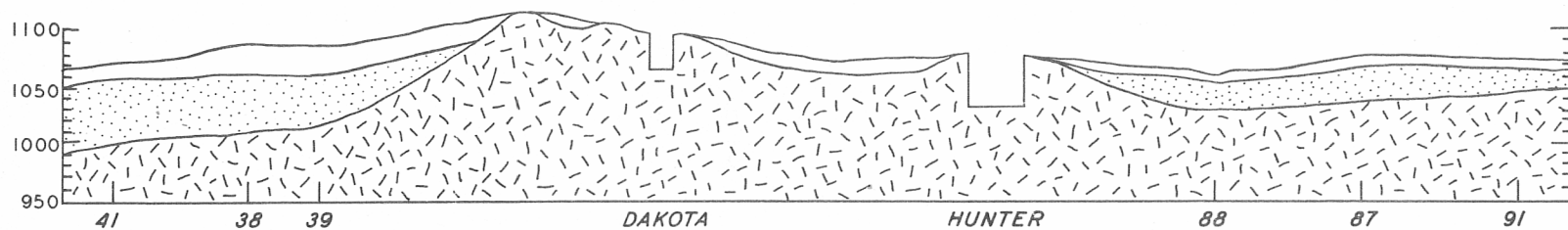


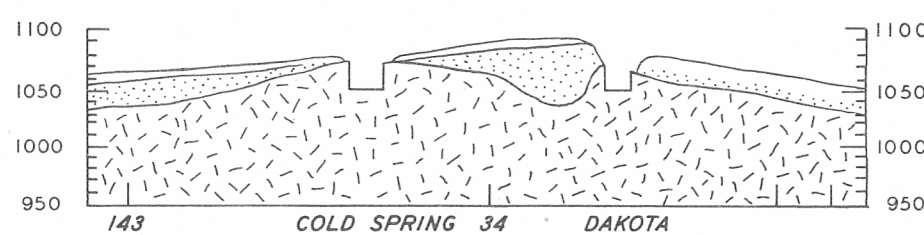
R 47 W R 46 W



CROSS SECTION A-A'



CROSS SECTION B-B'



CROSS SECTION C-C'

# MILBANK GRANITE AREA

MAP SHOWING THE RELIEF OF THE GRANITE SURFACE

CONTOUR LINES ON SURFACE OF GRANITE, INTERVAL 10 FEET  
 BASED ON INTERPRETATION OF GEOPHYSICAL SOUNDINGS  
 DATA TAKEN WITH AN ELECTRIC EARTH RESISTIVITY INSTRUMENT

- LEGEND**
- RESISTIVITY STATION AND NUMBER
  - ALTITUDE TOP OF GRANITE
  - DEPTH TO GRANITE
  - RESISTIVITY STATION DRILLED
  - BOULDER CLAY
  - SAND AND GRAVEL
  - GRANITE
  - QUARRY
  - GRANITE OUTCROP
  - HOUSE

STATE GEOLOGICAL SURVEY  
 VERMILLION, S. DAK.  
 JULY, AUGUST, 1947

