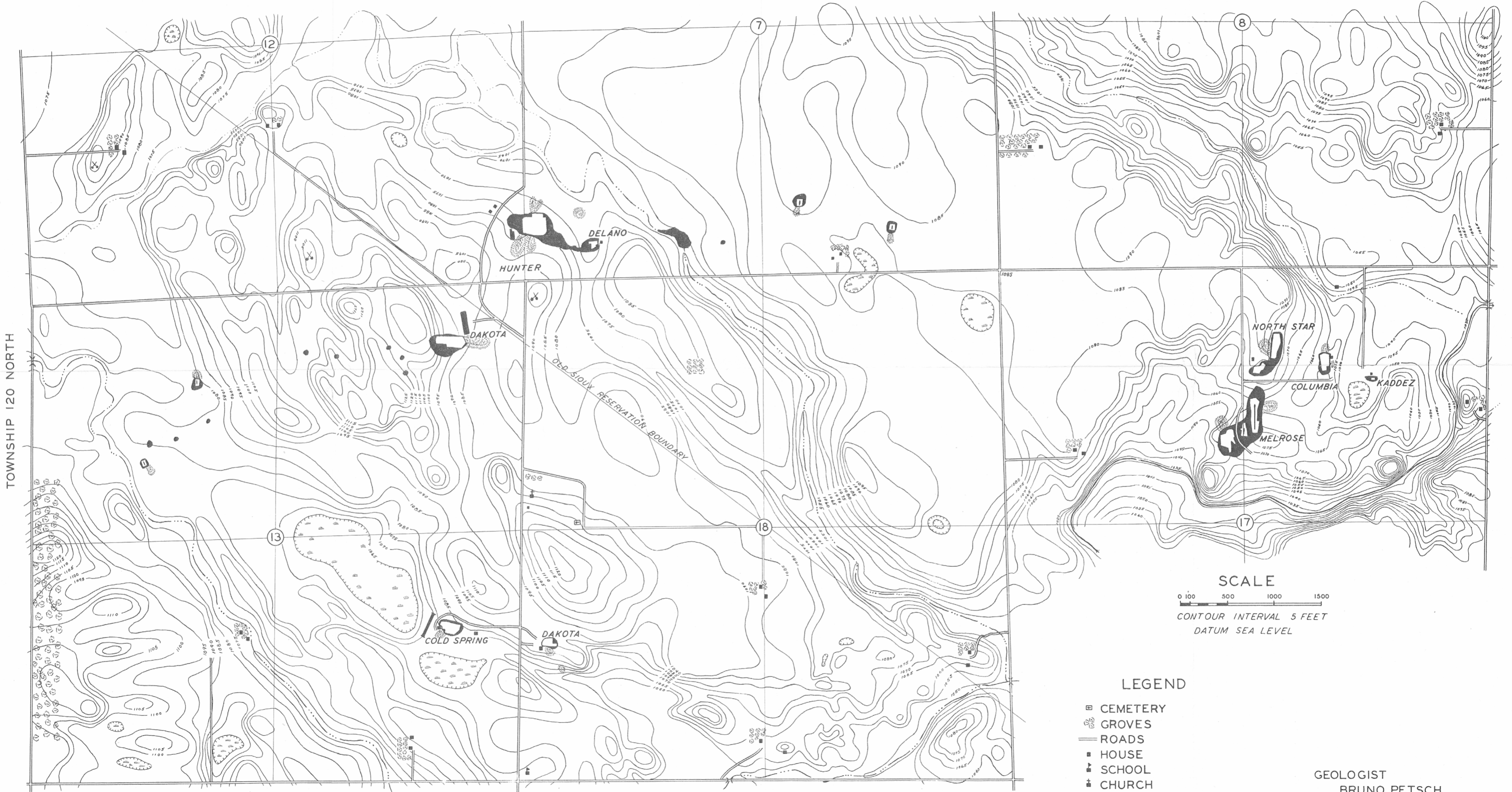


TOPOGRAPHIC MAP

OF

MILBANK GRANITE AREA

GRANT COUNTY



TOWNSHIP 120 NORTH

R 47 W R 46 W

STATE GEOLOGICAL SURVEY
VERMILLION, S. DAK.
1947

SCALE
0 100 500 1000 1500
CONTOUR INTERVAL 5 FEET
DATUM SEA LEVEL

- LEGEND**
- ☐ CEMETERY
 - ☼ GROVES
 - ROADS
 - HOUSE
 - ✚ SCHOOL
 - ✚ CHURCH
 - ≡ SWAMP
 - ▬ GRANITE OUTCROP
 - OPERATING QUARRY
 - ◻ ABANDONED QUARRY
 - ⊙ GROUT
 - ✕ GRAVEL PIT

GEOLOGIST
BRUNO PETSCH
SURVEYORS
LOYD CARLSON
RALPH MILLER