



# GIS as Government Information Systems

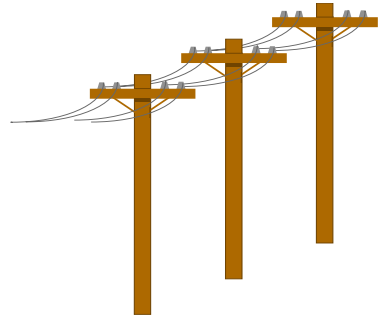
Black Hills Digital Mapping Association

May 2, 2006



365 People  
with \$45M

# Valued Partners in Technology and Broadcasting



Telecommunications



Computers



Public Broadcasting



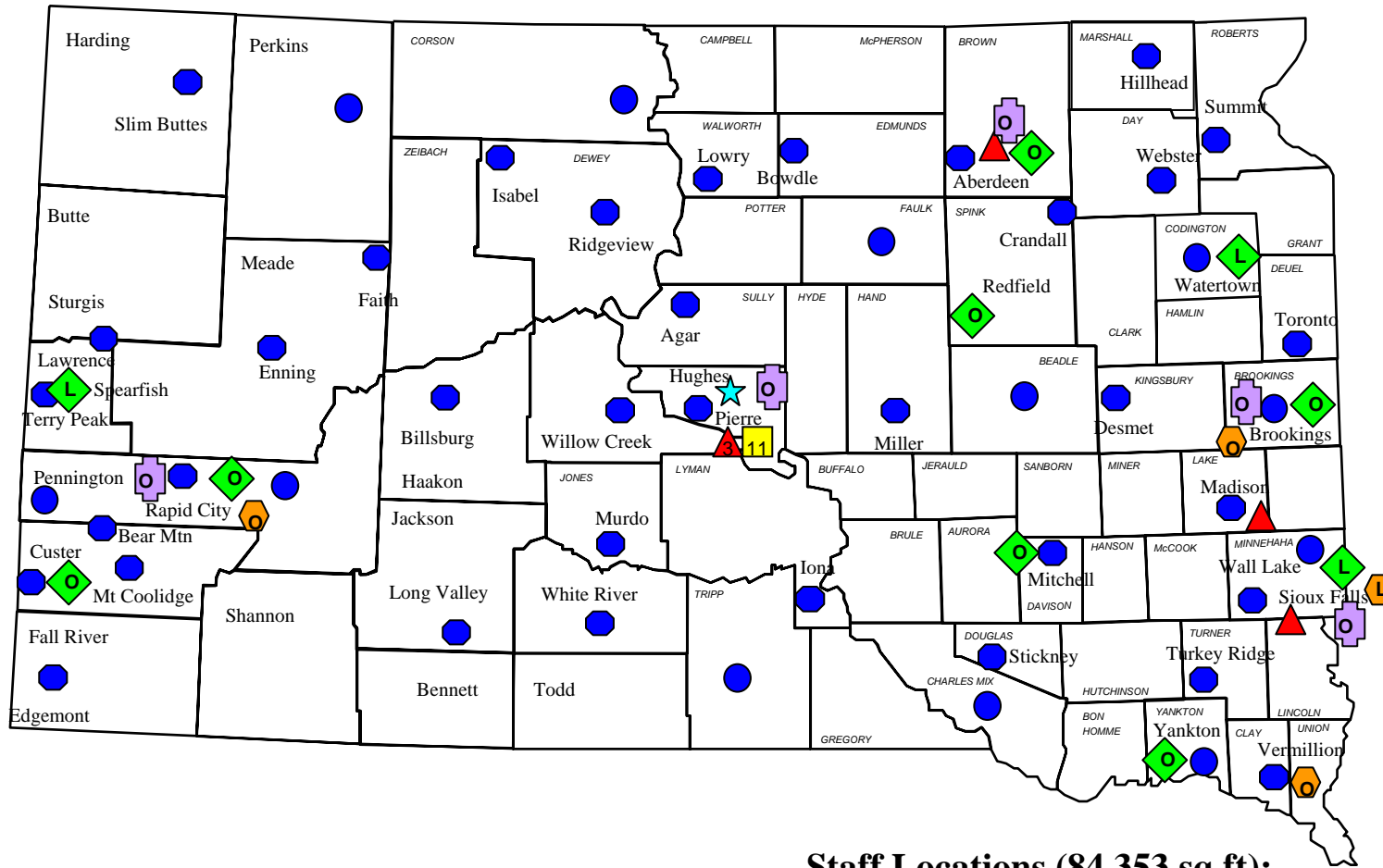


# BIT by the Numbers

- 175,000 Internet Surfers
- 22,240 phones
- 11,500 state radios
- 10,000 desktop devices
- 900 Information Systems
- 800 Broadband Connections
- 450 Computing platforms
- 321 Videoconferencing sites
- 9 Public TV and 9 Public Radio Stations
- 30 Trillion Characters of Data



# BIT Facilities



## Pierre Facilities

- Kneip
- Sammons
- 4<sup>th</sup> St.
- Becker-Hansen
- Capitol
- E. Sioux

- State Radio/Public Broadcasting Tower Sites
- ▲ Computer Rooms
- Network Rooms

### Staff Locations (84,353 sq ft):

- ★ Pierre
- ◆ LAN Support
- Engineering
- SDPB



# GIS Vision

**Service**

**Constituents**

**Visualization**

**Knowledge**

**Civil Servants**

**Simulations**

**Information**

**Information Systems**

**Modeling**

**Data**

**Computing Platforms**

**Facts**

**Access**

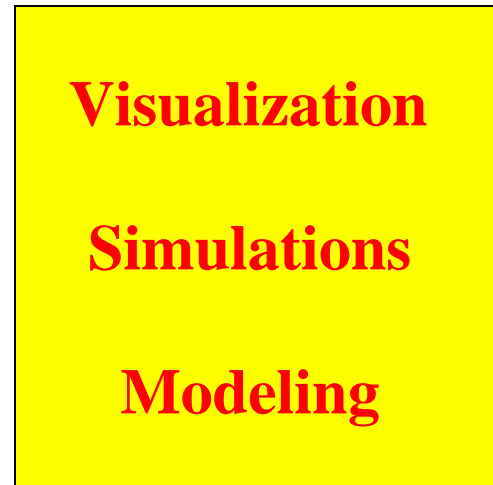
**Networking**

**Collaboration**

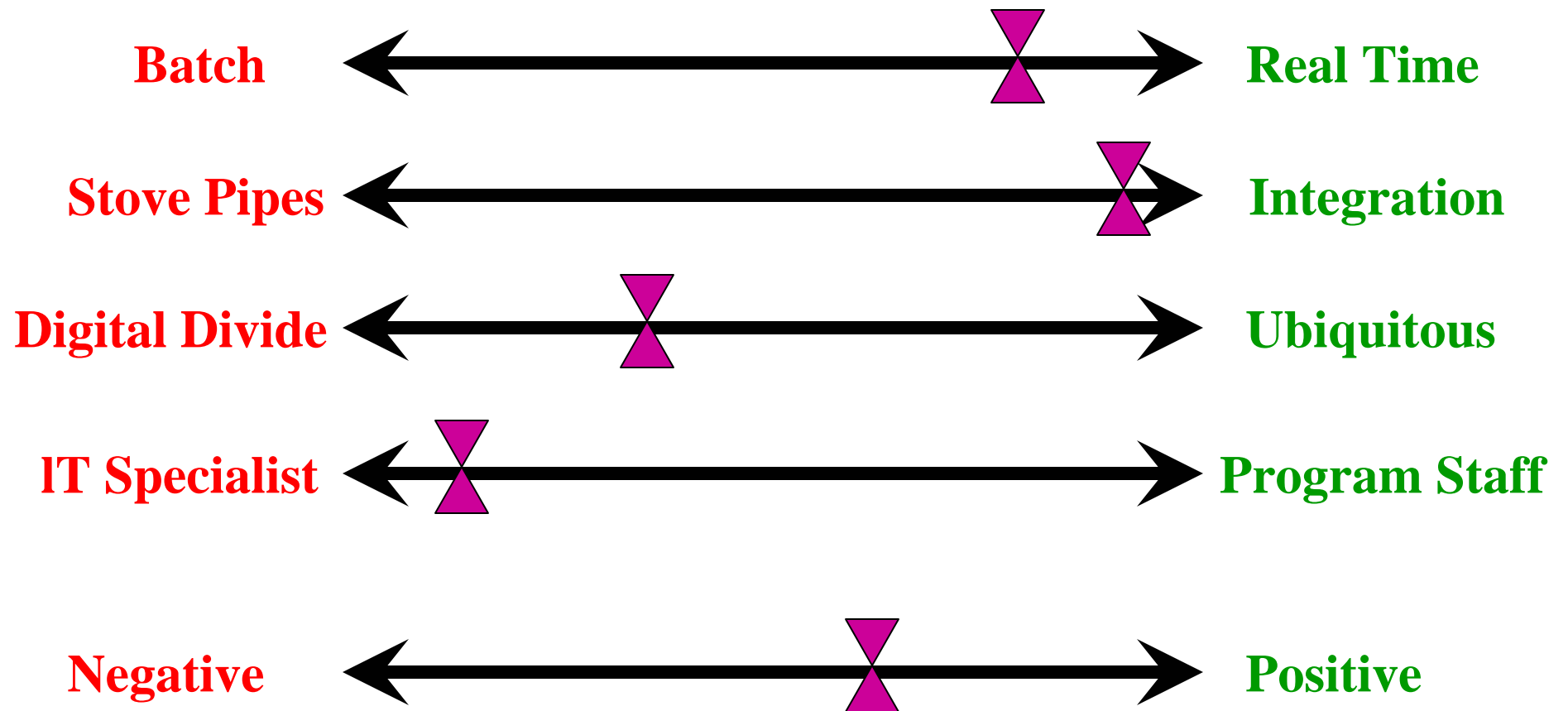
**Logic Factors**

**Technology Factors**

**Human Factors**



# GIS Spectrum



# Government Lines of Business

- Tax
- Regulate
- Protect
- Help
- Fund
- Standardize
- Inform



# Challenges

- Broadband
- Business Continuity
- Economic Development
- Health Care
- One-on One High School Computing
- Portfolio Management

